

BR BLACK RIVER CORPORATE PARK

927 Thomas Ave SW | Renton, WA
Industrial For Lease

BROKER
BONUS*
7.5%



Contact information:

Andrew Stark
Senior Vice President
andrew.stark@cbre.com
+1 206 442 2746

Andrew Hitchcock
Executive Vice President
andrew.hitchcock@cbre.com
+1 206 442 2719

Zac Snedeker
Vice President
zac.snedeker@cbre.com
+1 206 442 2709

CBRE

INDUSTRIAL FOR LEASE:

927 Thomas Ave SW

PROPERTY HIGHLIGHTS

- 19,400 SF Shell,
898 SF Office
- One dock door,
One grade door
- 24' clear height
- Easy access to I-5, I-405,
& SR 167
- Additional 1,294 SF Mezz
Office Available

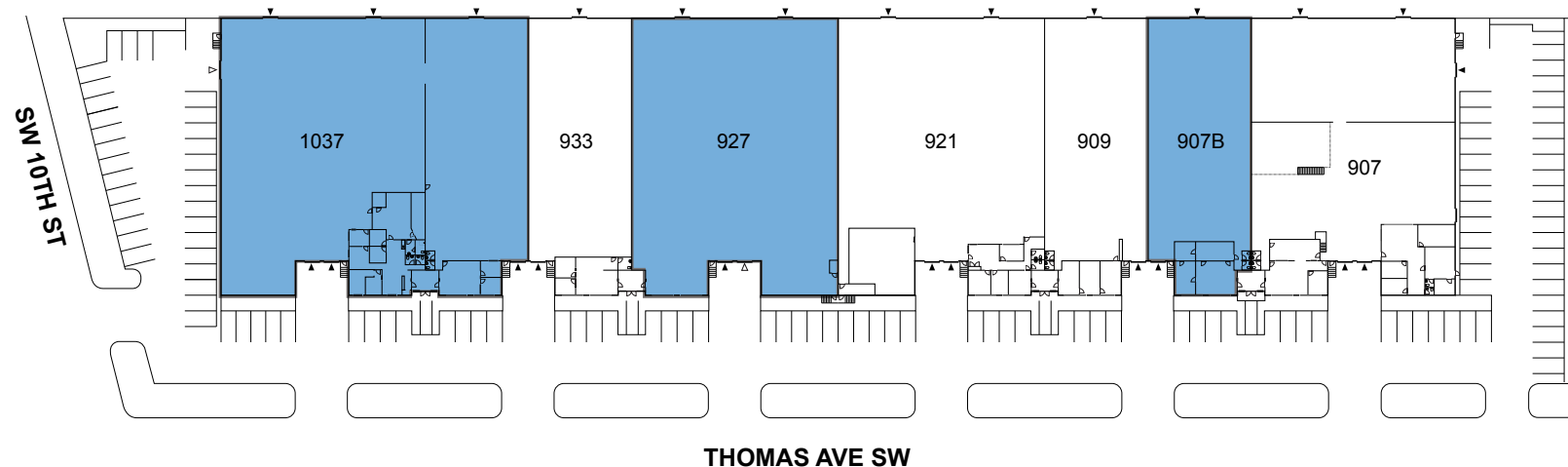
BROKER
BONUS*
7.5%

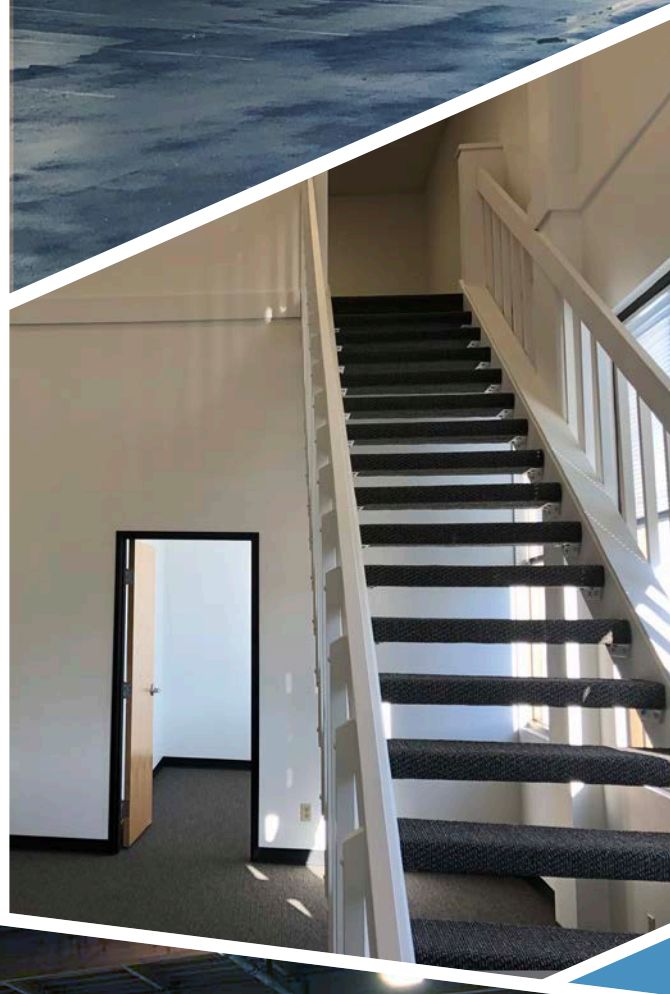
*7.5% Tenant Rep Fee paid
on first 60 months.
Minimum 5 year deal.
Commencement no later
than April 2021.
Ask brokers for details.



SITE PLAN:

▲ Dock Level Door △ On-Grade Door







BR BLACK RIVER CORPORATE PARK

Please contact the leasing team for information:

Andrew Stark

Senior Vice President

andrew.stark@cbre.com

+1 206 442 2746

Andrew Hitchcock

Executive Vice President

andrew.hitchcock@cbre.com

+1 206 442 2719

Zac Snedeker

Vice President

zac.snedeker@cbre.com

+1 206 442 2709

CBRE

1420 Fifth Avenue | Suite 1700 | Seattle, WA 98101

***BONUS DISCLAIMER FOR INCENTIVE OFFERED:** This incentive is being offered by the ownership of 927 Thomas Ave SW to brokers who sign a 5 year deal with a qualified tenant. CBRE does not accept nor assume any responsibility or liability, direct or indirect, relating to this broker incentive. All CBRE brokers eligible to receive this incentive must disclose such incentive to the tenant prior to signing a lease.

© 2020 CBRE, Inc. The information contained in this document has been obtained from sources believed reliable. While CBRE, Inc. does not doubt its accuracy, CBRE, Inc. has not verified it and makes no guarantee, warranty or representation about it. It is your responsibility to independently confirm its accuracy and completeness. Any projections, opinions, assumptions or estimates used are for example only and do not represent the current or future performance of the property. The value of this transaction to you depends on tax and other factors which should be evaluated by your tax, financial and legal advisors. You and your advisors should conduct a careful, independent investigation of the property to determine to your satisfaction the suitability of the property for your needs. CBRE and the CBRE logo are service marks of CBRE, Inc. and/or its affiliated or related companies in the United States and other countries. All other marks displayed on this document are the property of their respective owners. PMStudio_December2020