

1495 N. Maitland Avenue

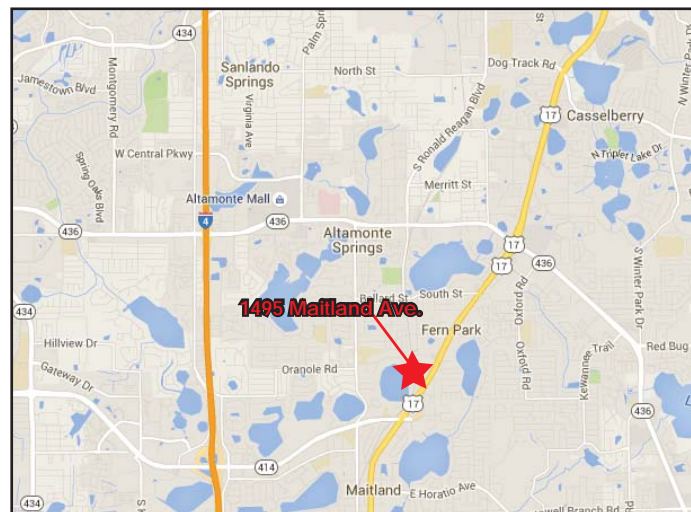
Maitland, FL 32751

FOR SALE/LEASE



FEATURES:

- ◆ Total Size: 6,160 SF on 0.61 acre lot
- ◆ Perfect professional or medical office
- ◆ Potential income property
- ◆ Could be divided with owner occupying half and leasing half
- ◆ Parking for 25+ vehicles (front and back)
- ◆ Zoned RP (Residential Professional, Seminole Cty)
- ◆ Just north of Maitland Blvd.
- ◆ Easy access to I-4, US 17/92 & SR-436
- ◆ Minutes from Altamonte Mall, Florida Hospital Altamonte and Uptown Altamonte



FINANCIAL INFORMATION:

- ◆ Asking Price: \$962,500 or \$16.50 psf Modified Gross



COMMERCIAL REAL ESTATE SERVICES

LOCAL EXPERTISE. NATIONAL REACH. WORLD CLASS

All information furnished regarding property for sale, rental or financing is from sources deemed reliable, but no warranty or representation is made to the accuracy thereof and the same is submitted to errors, omissions, change of price, rental or other conditions prior to sale, lease or financing or withdrawal without notice. No liability of any kind is to be imposed on the broker herein.

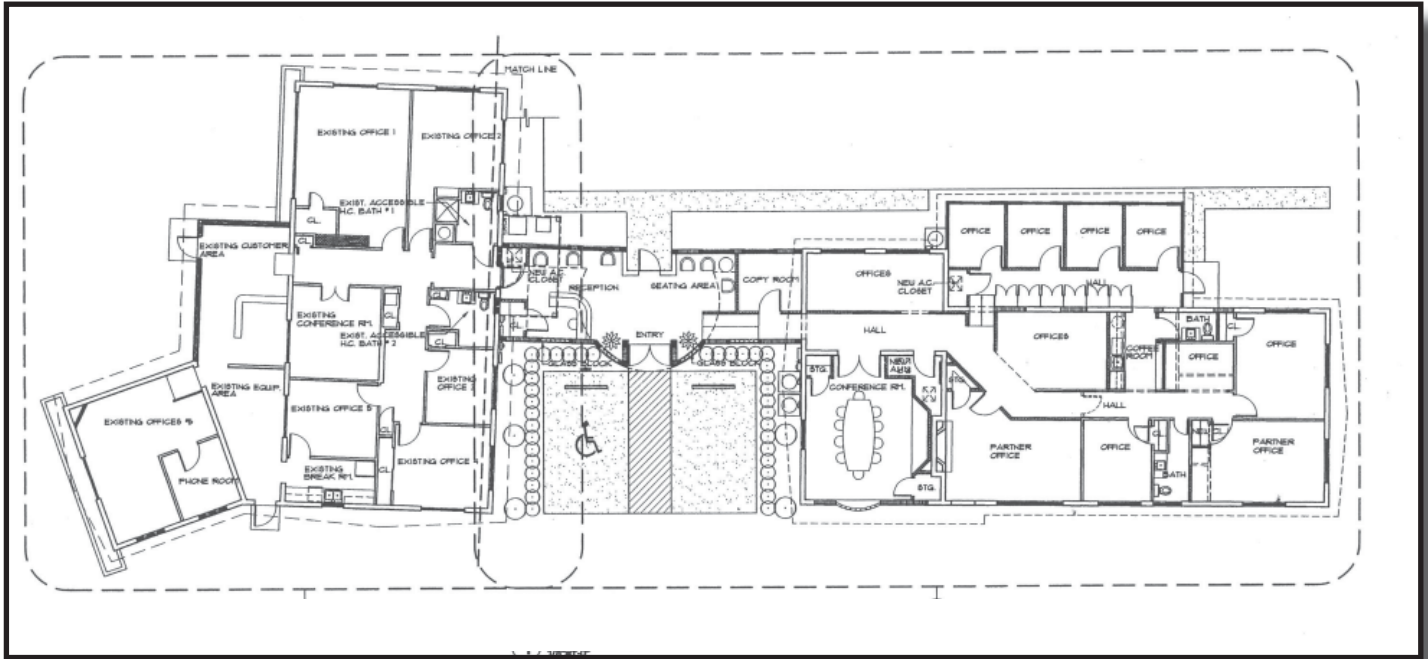
4700 Millenia Blvd
Suite 200
Orlando, FL 32839
ph: 321.281.8500 fx: 321.281.8519
www.lee-associates.com

Tim Spencer
321.281.8508
tspencer@lee-associates.com

1495 N. Maitland Avenue

Maitland, FL 32751

FOR SALE/LEASE



OFFICE / MEDICAL



4700 Millenia Blvd
Suite 200
Orlando, FL 32839
ph: 321.281.8500 fx: 321.281.8519
www.lee-associates.com

LOCAL EXPERTISE. NATIONAL REACH. WORLD CLASS

All information furnished regarding property for sale, rental or financing is from sources deemed reliable, but no warranty or representation is made to the accuracy thereof and the same is submitted to errors, omissions, change of price, rental or other conditions prior to sale, lease or financing or withdrawal without notice. No liability of any kind is to be imposed on the broker herein.

Tim Spencer

321.281.8508

tspencer@lee-associates.com