

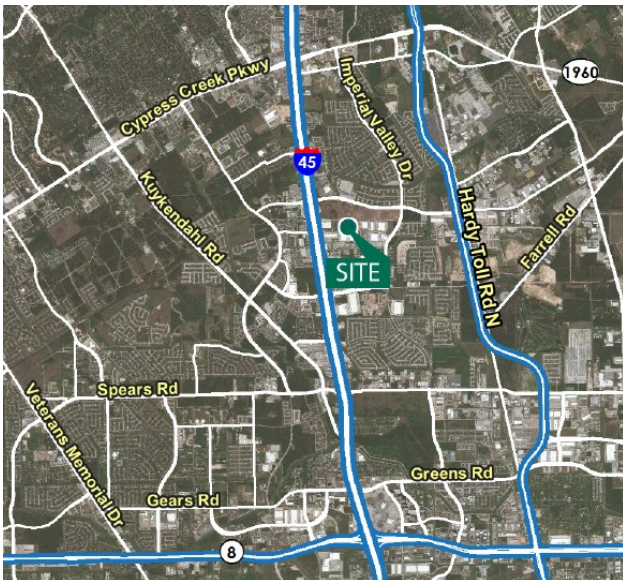
Prologis Park Northpark

433 Northpark Central Drive, Suite 100

Houston, Texas 77073 USA



58,800 Square Feet Industrial Space For Lease



location

- Conveniently located along I-45 North between Airtex Drive and Richey Road
- Easy access to I-45, Beltway 8 and the Hardy Toll Road
- Part off the master planned Prologis Park Northpark
- Unincorporated Harris County
- Double Freeport tax exemption

facility

- 100,800 SF facility with 58,800 SF available
- 21,916 SF office
- 1200 Amps of power
- 24' clear height
- 10 dock doors including (1) 18' x 25' oversized door / 1 drive in ramp
- 35' x 40' column spacing
- ESFR sprinkler system

Cushman & Wakefield

Jason Dillee

jason.dillee@cushwake.com

ph +1 713.345.1432

1330 Post Oak Blvd., Suite 2700

Houston, Texas 77056-3054 USA

Prologis

Bryan O'Hair

bohair@prologis.com

ph +1 713.613.6942

1296 North Post Oak Road

Houston, Texas 77055 USA

Prologis Park Northpark

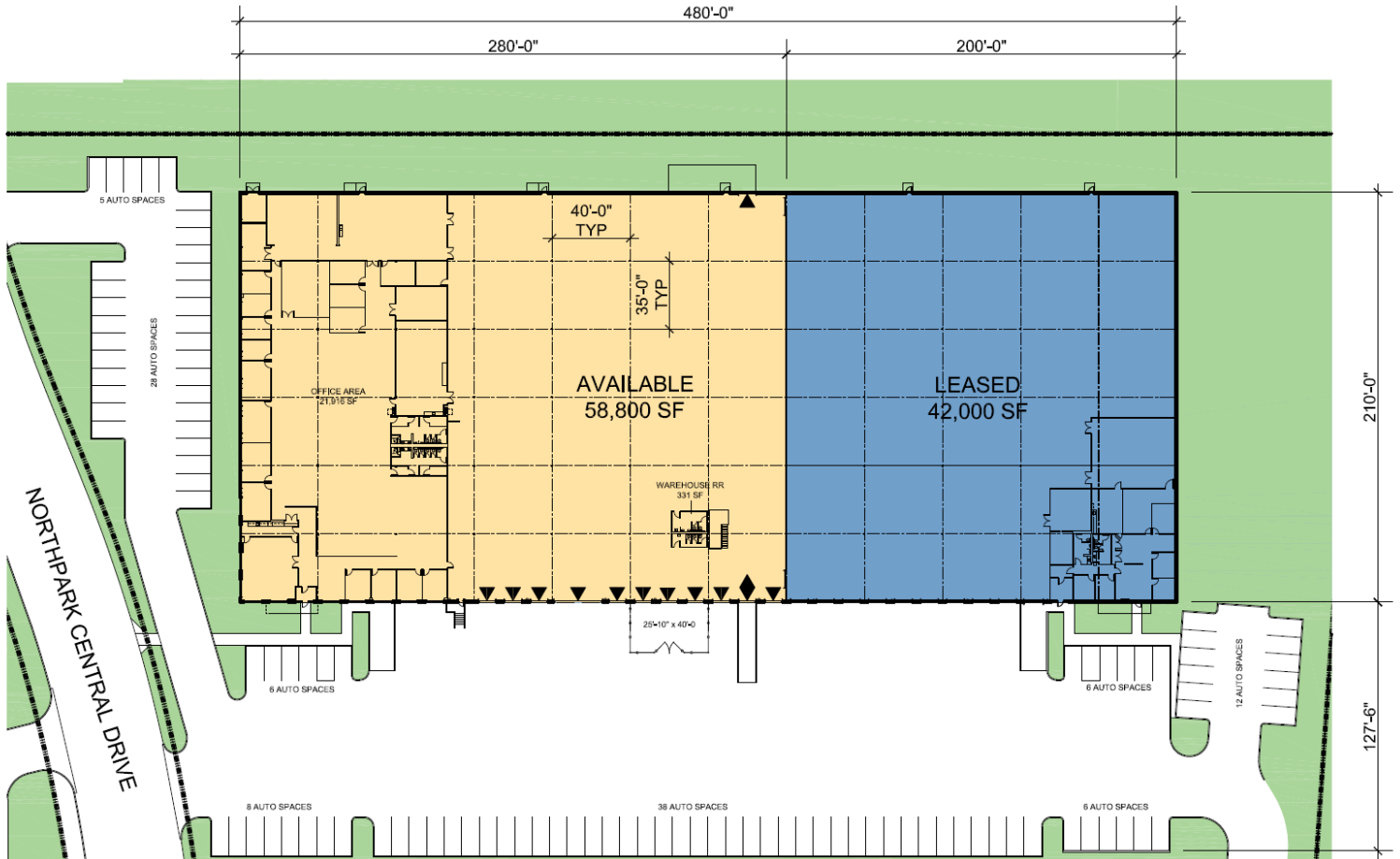
433 Northpark Central Drive, Suite 100

Houston, Texas 77073 USA



PROLOGIS

58,800 Square Feet Industrial Space For Lease



Cushman & Wakefield

Jason Dillee

jason.dillee@cushwake.com

ph +1 713.345.1432

1330 Post Oak Blvd., Suite 2700

Houston, Texas 77056-3054 USA

Prologis

Bryan O'Hair

bohair@prologis.com

ph +1 713.613.6942

1296 North Post Oak Road

Houston, Texas 77055 USA