

26755 BALLARD STREET
HARRISON TWP., MICHIGAN

MEDICAL/LAND FOR SALE
106,518 Square Feet / 12.83 Acres



**SIGNATURE
ASSOCIATES**
KNOW SIGNATURE | KNOW RESULTS

REDEVELOPMENT OPPORTUNITY



PROPERTY FEATURES

- 106,518 square foot building:
 - 44,058 square feet lower level
 - 45,171 square feet on the 1st floor
 - 16,839 square feet on the 2nd floor
- 12.83 Acres
- Possible assisted living/multi-family or sub-development
- Former hospital and medical offices
- Full fire suppression system
- Albert Kahn designed building
- 150 parking spaces
- Sale Price: \$800,000 (\$7.51/sq.ft.)



For more information, please contact:

CHRIS MONSOUR
(248) 948 0107
cmonsour@signatureassociates.com

SIGNATURE ASSOCIATES
One Towne Square, Suite 1200
Southfield, MI 48076
www.signatureassociates.com

26755 Ballard Street – Harrison Twp., Michigan

Medical/Land For Sale

106,518
Square Feet
12.83 Acres
AVAILABLE

Additional Exteriors



For more information, please contact:

CHRIS MONSOUR
(248) 948 0107
cmonsour@signatureassociates.com

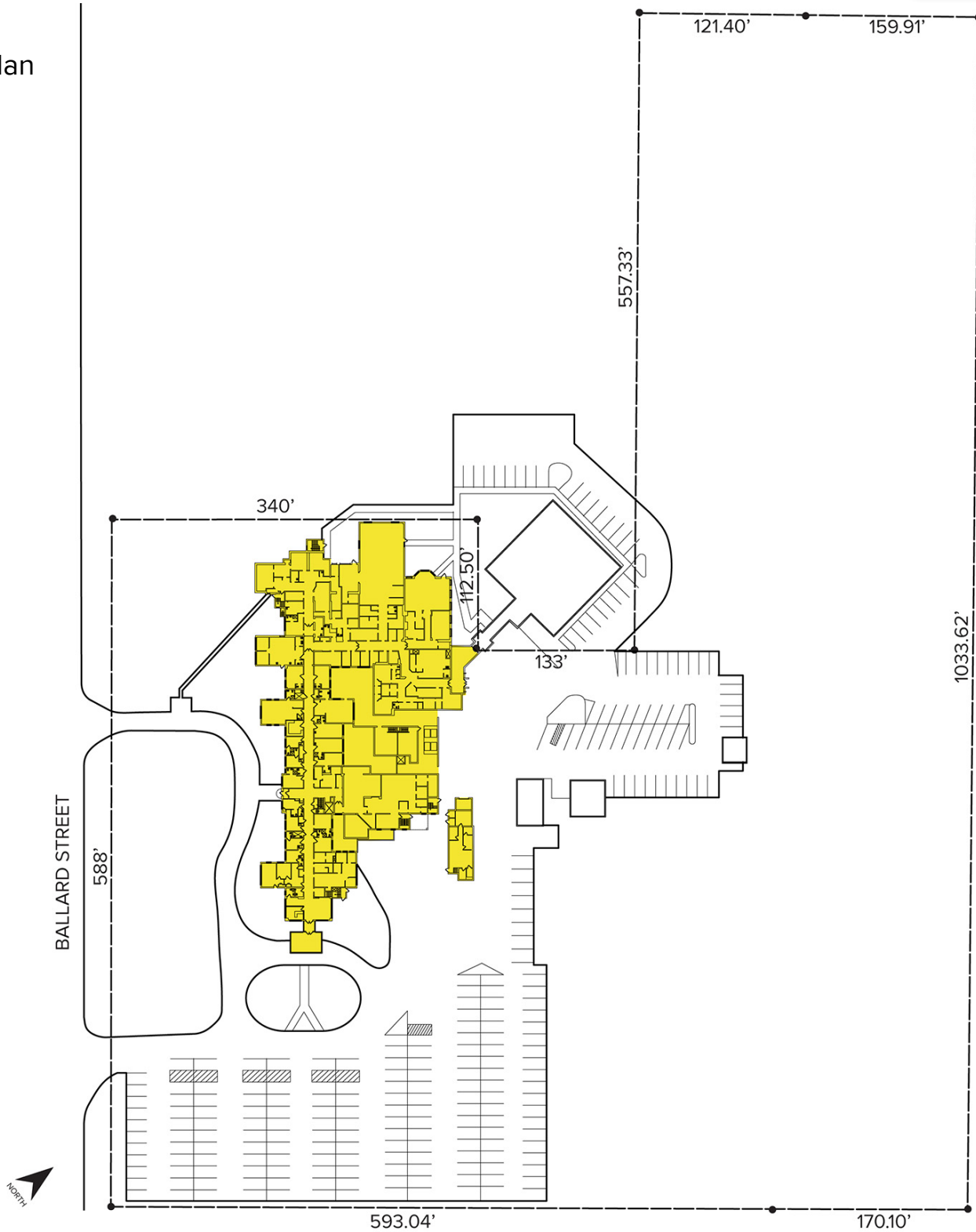
SIGNATURE ASSOCIATES
One Towne Square, Suite 1200
Southfield, MI 48076
www.signatureassociates.com

26755 Ballard Street – Harrison Twp., Michigan

Medical/Land For Sale

106,518
Square Feet
12.83 Acres
AVAILABLE

Site Plan



For more information, please contact:

CHRIS MONSOUR
(248) 948 0107
cmonsour@signatureassociates.com

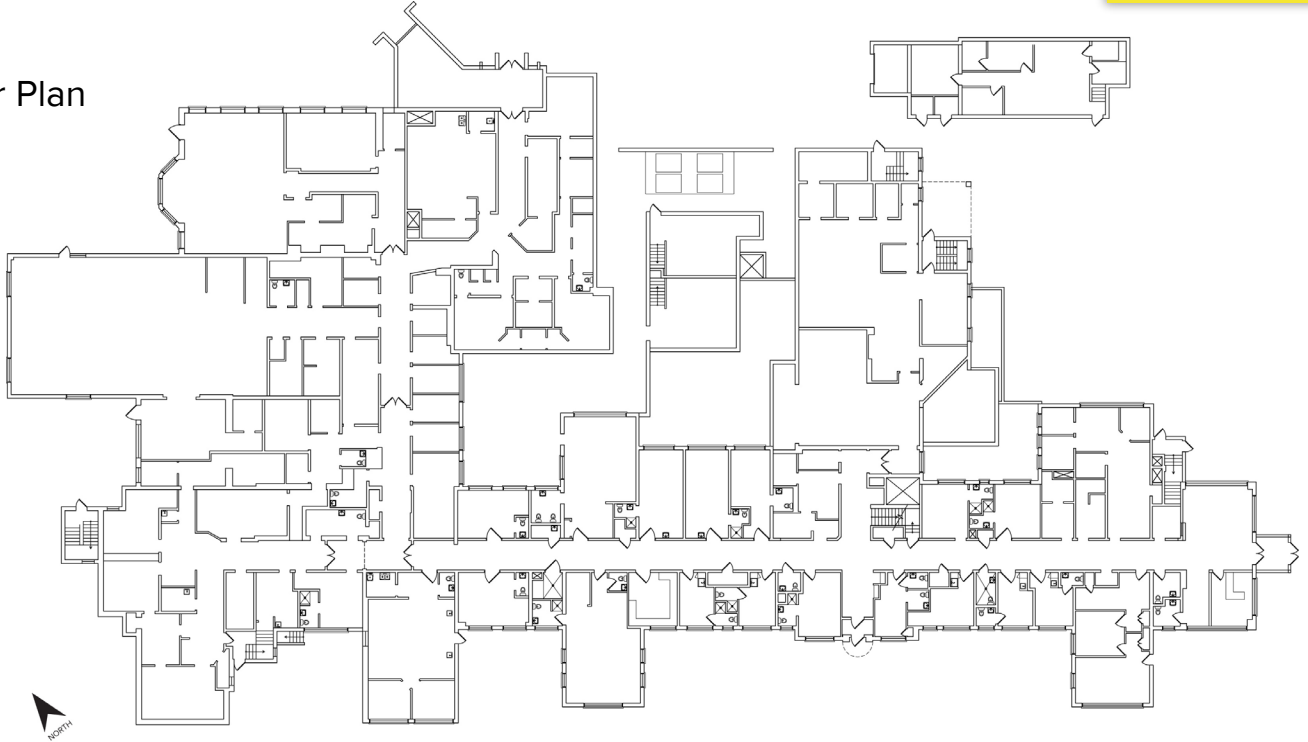
SIGNATURE ASSOCIATES
One Towne Square, Suite 1200
Southfield, MI 48076
www.signatureassociates.com

26755 Ballard Street – Harrison Twp., Michigan

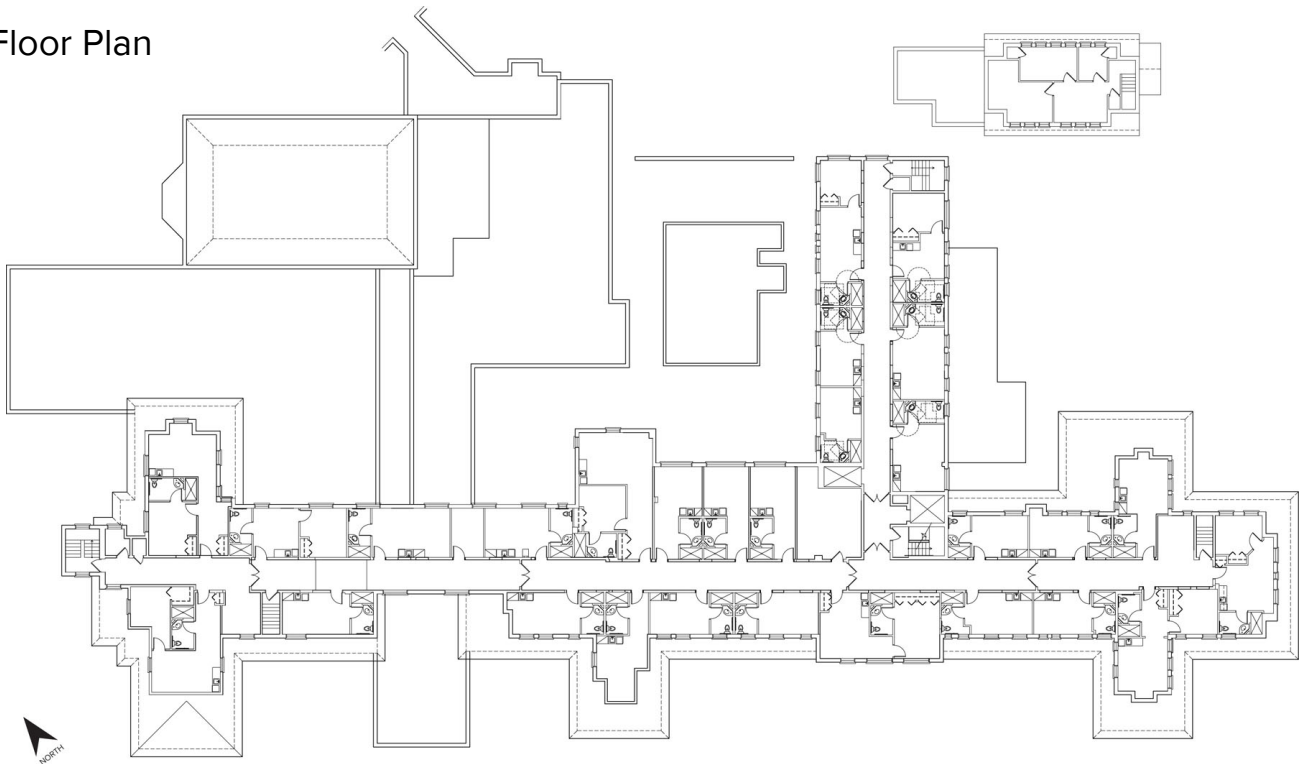
Medical/Land For Sale

106,518
Square Feet
12.83 Acres
AVAILABLE

First Floor Plan



Second Floor Plan

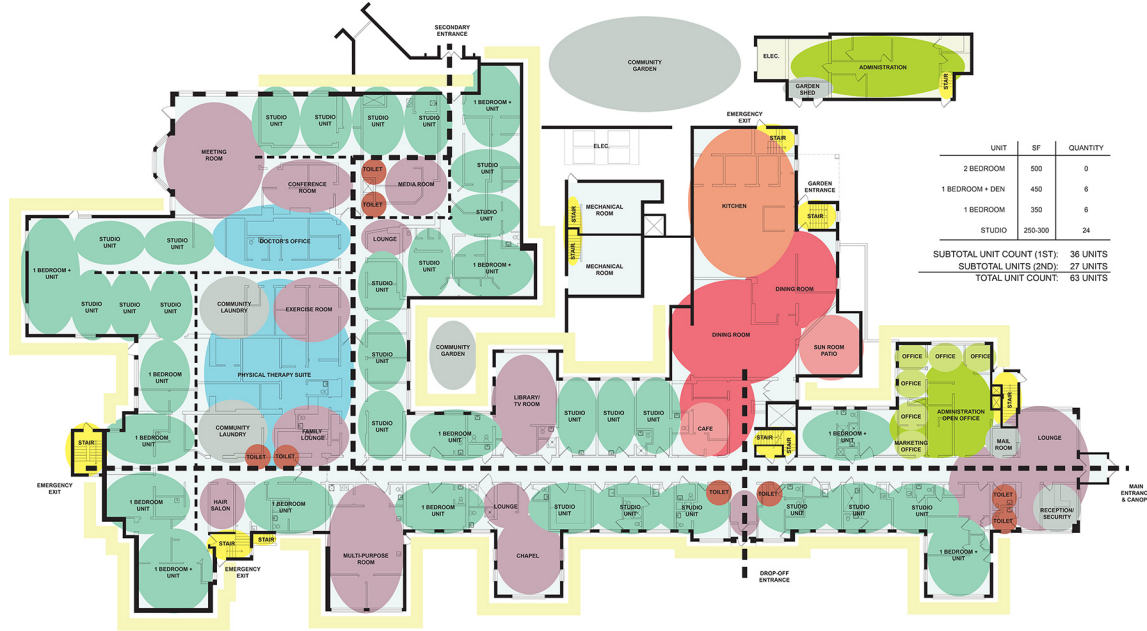


For more information, please contact:

CHRIS MONSOUR
(248) 948 0107
cmonsour@signatureassociates.com

SIGNATURE ASSOCIATES
One Towne Square, Suite 1200
Southfield, MI 48076
www.signatureassociates.com

Conceptual First Floor Plan

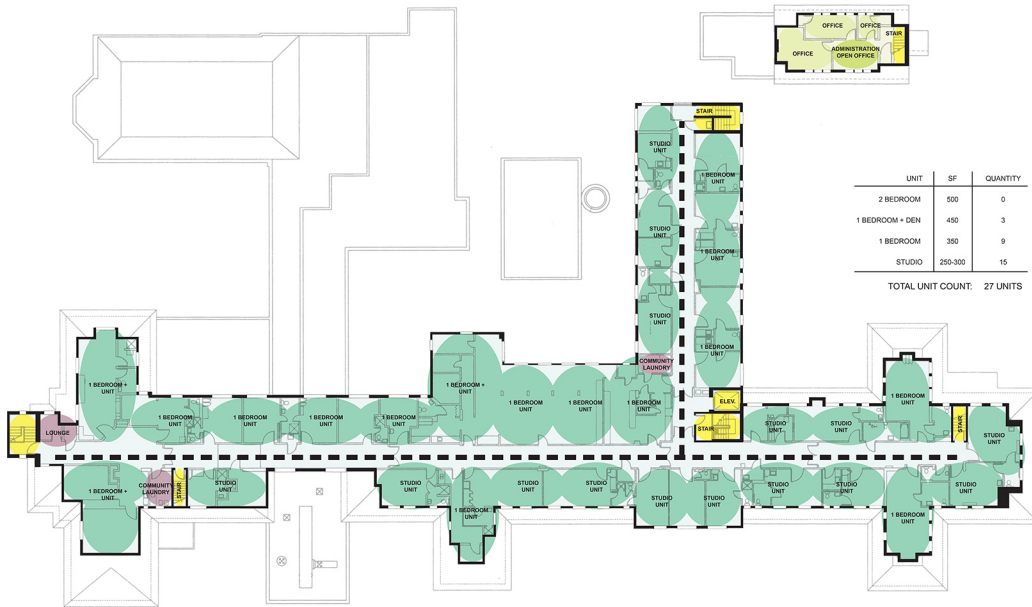


UNIT	SF	QUANTITY
2 BEDROOM	500	0
1 BEDROOM + DEN	450	6
1 BEDROOM	350	6
STUDIO	250-300	24
SUBTOTAL UNIT COUNT (1ST): 36 UNITS		
SUBTOTAL UNITS (2ND): 27 UNITS		
TOTAL UNIT COUNT: 63 UNITS		

FIRST FLOOR PLAN - CONCEPTUAL LAYOUT

Northshore - Independent Living
 MT. Clemens, Michigan
 2015.014 Date: 03.24.15
 SVA
SHAW-WALKER ARCHITECTS © 2015 SHAW-WALKER ARCHITECTS, INC.

Conceptual Second Floor Plan



UNIT	SF	QUANTITY
2 BEDROOM	500	0
1 BEDROOM + DEN	450	3
1 BEDROOM	350	9
STUDIO	250-300	15
TOTAL UNIT COUNT: 27 UNITS		

SECOND FLOOR PLAN - CONCEPTUAL LAYOUT

Northshore - Independent Living
 MT. Clemens, Michigan
 2015.014 Date: 03.24.15
 SVA
SHAW-WALKER ARCHITECTS © 2015 SHAW-WALKER ARCHITECTS, INC.

For more information, please contact:
CHRIS MONSOUR
 (248) 948 0107
 cmonsour@signatureassociates.com

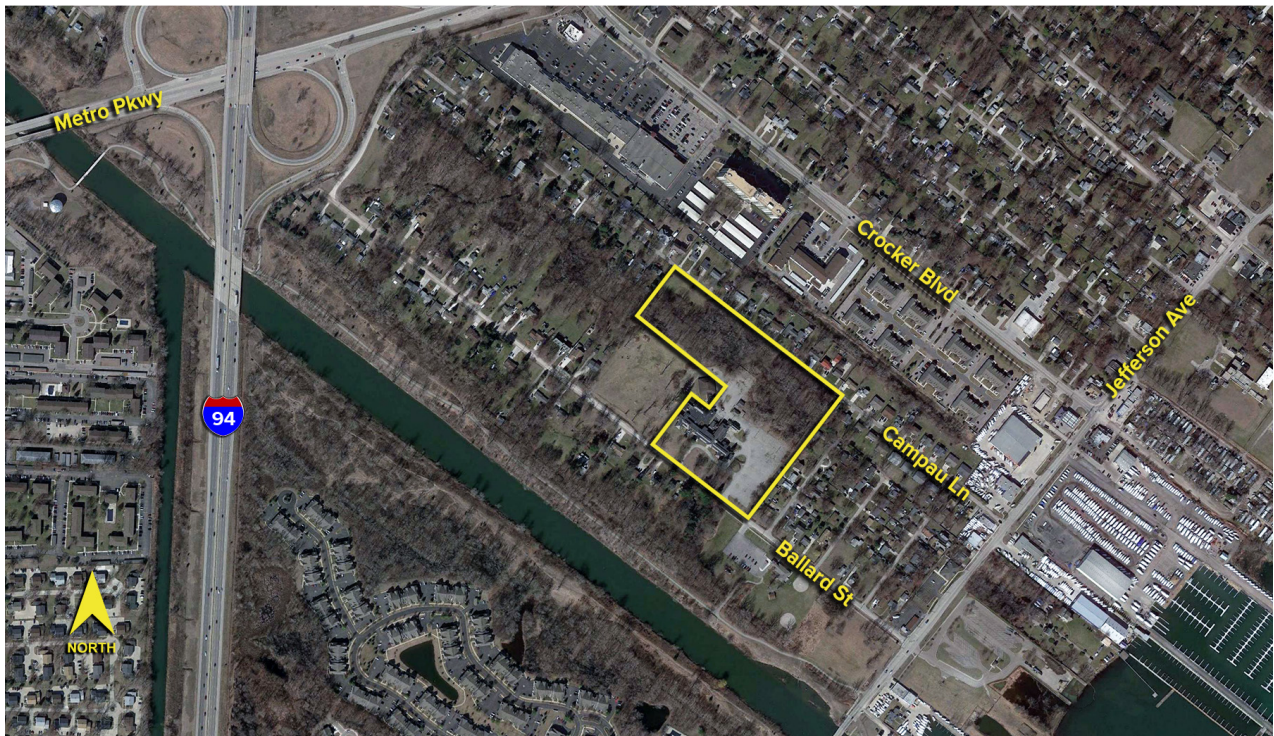
SIGNATURE ASSOCIATES
 One Towne Square, Suite 1200
 Southfield, MI 48076
 www.signatureassociates.com

26755 Ballard Street – Harrison Twp., Michigan

Medical/Land For Sale

106,518
Square Feet
12.83 Acres
AVAILABLE

Aerial Views



For more information, please contact:

CHRIS MONSOUR
(248) 948 0107
cmonsour@signatureassociates.com

SIGNATURE ASSOCIATES
One Towne Square, Suite 1200
Southfield, MI 48076
www.signatureassociates.com