

Willow Creek
Corporate
Center

BUILDING B

10675 Willows Road NE
Redmond, Washington

FOR LEASE



FOR LEASE | UP TO 6,295 SF

Office Space Available

Suite	Size	Available	Description
250	6,295 SF	12/1/2021	All office, open area for work stations, multiple conference rooms



Willow Creek Corporate Center



VIEWS

Sweeping views of the Sammamish Valley & Willows Run Golf Course



SETTING

High-tech business park environment with nicely built-out office finishes



PARKING

3/1,000 SF parking ratio



FIBER

Comcast High Speed Ethernet Fiber



TRAILS

Expansive trail system runs right behind Willow Creek Corporate Center



FOOD

Minutes from downtown Redmond restaurants



ON-SITE

Showers & lockers

For more information, please contact:



10500 NE 8th Street, Suite 900
Bellevue, Washington 98004

broderickgroup.com

Paul Jerue
425.646.5223
jerue@broderickgroup.com

Tyler Slone
425.274.4281
slone@broderickgroup.com

Eric Meussner
425.274.4282
meussner@broderickgroup.com

The information contained herein has been given to us by the owner or sources which we deem reliable. We have no reason to doubt its accuracy, but we do not guarantee it. Prospective tenants should carefully verify all information contained herein.

Willow Creek
Corporate
Center

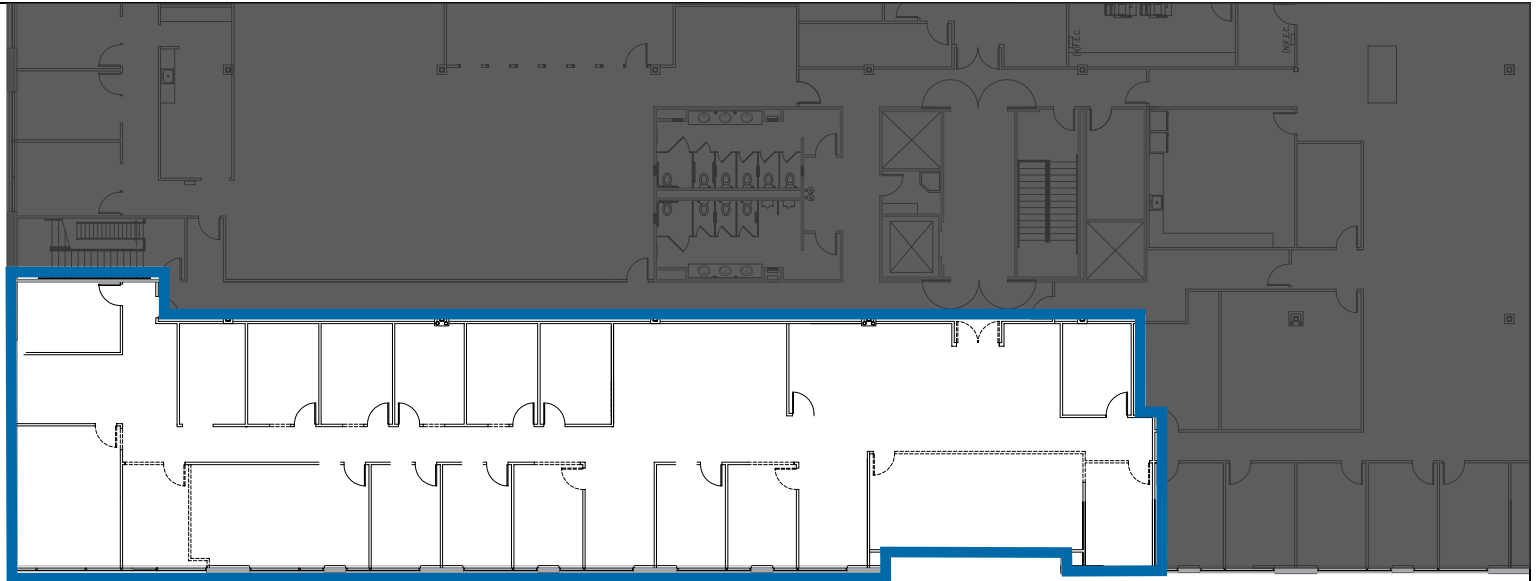
BUILDING B

10675 Willows Road NE
Redmond, Washington

FOR LEASE

Suite 250
6,295 SF

All Office



↓ *Willows Golf Course*



10500 NE 8th Street, Suite 900
Bellevue, Washington 98004

broderickgroup.com

For more information, please contact:

Paul Jerue
425.646.5223
jerue@broderickgroup.com

Tyler Slone
425.274.4281
slone@broderickgroup.com

Eric Meussner
425.274.4282
meussner@broderickgroup.com

The information contained herein has been given to us by the owner or sources which we deem reliable. We have no reason to doubt its accuracy, but we do not guarantee it. Prospective tenants should carefully verify all information contained herein.

BUILDING B

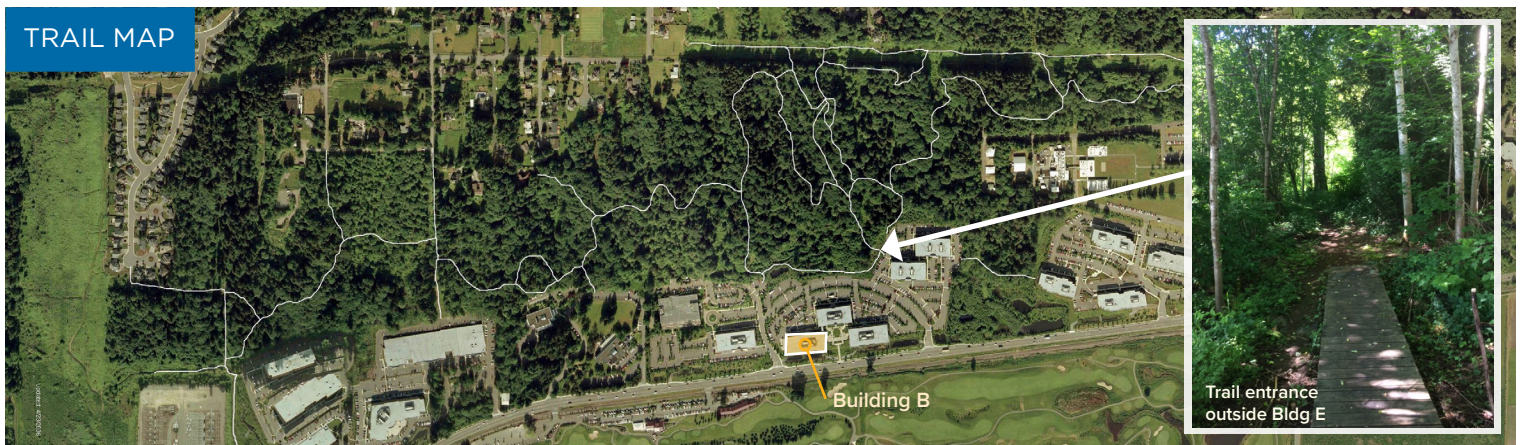
10675 Willows Road NE
Redmond, Washington

FOR LEASE



Willow Creek Corporate Center

Willow Creek Corporate Center offers a distinctive seven-building corporate campus totaling 419,000 square feet within 27 acres of landscaped grounds overlooking Willows Run Golf Course. Minutes from downtown Redmond, Willow Creek Corporate Center is exceptionally well located and easy to access off of Willows Road. Both high-profile corporate companies and small private businesses call Willow Creek Corporate Center home.



For more information, please contact:



10500 NE 8th Street, Suite 900
Bellevue, Washington 98004

broderickgroup.com

Paul Jerue
425.646.5223
jerue@broderickgroup.com

Tyler Slone
425.274.4281
slone@broderickgroup.com

Eric Meussner
425.274.4282
meussner@broderickgroup.com