

For Sale

±42,980 SF on ±14.56 Acres
Land Site w/ Industrial
Improvements

1310-1330 Hugh Road Houston, Texas 77067



±14.56 Acres

Hugh Road

Property Highlights

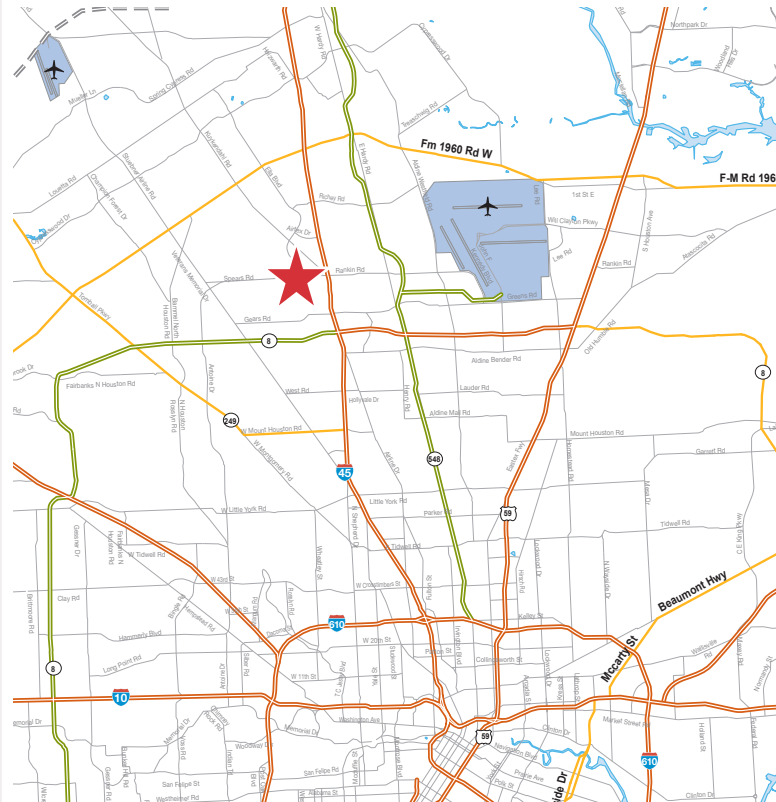
PROPERTY SIZE

- ±14.56 Acres (Total)
- ±42,980 SF of Existing Improvements
- ±9.5 Acres Undeveloped Land

PROPERTY & BUILDING FEATURES

- ±2.118 Acres Impacted by Powerline Easement
- Existing Industrial Improvements (Renovations Needed if Keeping Long-Term)
- Monthly Rental Income from (5) Tenants
- Utilities in Place
- Ideal Site for Redevelopment
- Less than 1.5 Miles from Sam Houston Pkwy West and 1.3 Miles from I-45 North.
- Motivated Seller, Priced Well below HCAD Value of \$2,091,497

Sale Price: \$1,350,000



Clay Pritchett, SIOR

tel 713 985 4631
fax 832 448 2264
clay.pritchett@naipartners.com

NAI Partners

tel 713-629-0500
fax 713 629 0504
www.naipartners.com

NAIPartners

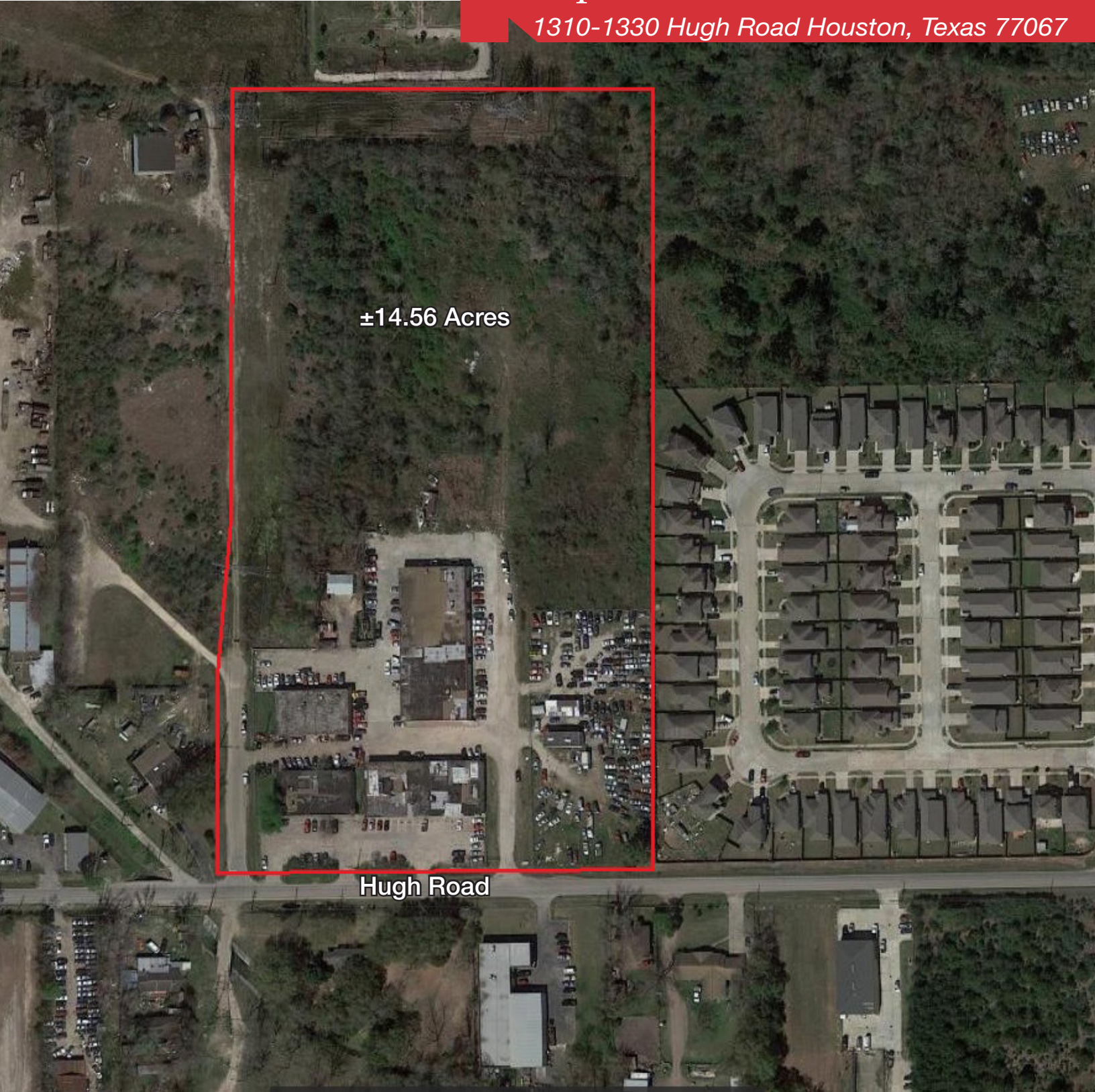
The information contained herein has been given to us by the owner of the property or other sources we deem reliable, we have no reason to doubt its accuracy, but we do not guarantee it. All information should be verified prior to purchase or lease. © 2015 NAI Partners. All rights reserved.

HOUSTON | AUSTIN | SAN ANTONIO

For Sale

**±42,980 SF on ±14.56 Acres
Land Site w/ Industrial
Improvements**

1310-1330 Hugh Road Houston, Texas 77067



±14.56 Acres

Hugh Road

Clay Pritchett, SIOR

tel 713 985 4631

fax 832 448 2264

clay.pritchett@naipartners.com

NAI Partners

tel 713-629-0500

fax 713 629 0504

www.naipartners.com

NAIPartners

HOUSTON | AUSTIN | SAN ANTONIO

The information contained herein has been given to us by the owner of the property or other sources we deem reliable, we have no reason to doubt its accuracy, but we do not guarantee it. All information should be verified prior to purchase or lease. © 2015 NAI Partners. All rights reserved.

For Sale

±42,980 SF on ±14.56 Acres Land Site w/ Industrial Improvements

1310-1330 Hugh Road Houston, Texas 77067



1310-1330 Hugh Rd.
Houston, TX 77067

Clay Pritchett, SIOR

tel 713 985 4631

fax 832 448 2264

clay.pritchett@naipartners.com

NAI Partners

tel 713-629-0500

fax 713 629 0504

www.naipartners.com

NAIPartners

HOUSTON | AUSTIN | SAN ANTONIO

The information contained herein has been given to us by the owner of the property or other sources we deem reliable, we have no reason to doubt its accuracy, but we do not guarantee it. All information should be verified prior to purchase or lease. © 2015 NAI Partners. All rights reserved.