



FOR LEASE

Allenmore B Medical Office Building

1901 S UNION AVE | TACOMA, WA



Class A Medical Office Space located on the
Multicare Allenmore Hospital Campus

WILL FRAME
253.722.1412
will.frame@kidder.com

DREW FRAME
253.722.1433
drew.frame@kidder.com

**Kidder
Mathews**

This information supplied herein is from sources we deem reliable. It is provided without any representation, warranty, or guarantee, expressed or implied as to its accuracy. Prospective Buyer or Tenant should conduct an independent investigation and verification of all matters deemed to be material, including, but not limited to, statements of income and expenses. Consult your attorney, accountant, or other professional advisor.

KIDDER.COM

FOR LEASE

Allenmore B Medical Office Building

1901 S UNION AVE | TACOMA, WA



SURFACE parking at 5/1,000 SF including specified patient parking

MEDICAL specific utilities in place

LOCATED on the Multicare Allenmore Hospital Campus with quick access to I-5 and Hwy 16

MULTICARE Allenmore Hospital, established in 1929 offers Pierce County Residents convenient access to hundreds of care providers, the latest diagnostic and treatment technologies plus a 24 hour emergency department

AVAILABILITIES

SUITE	SF
Suite 2003	2,026
Suite 3001	1,167
Suite 3005	1,840
Suite 4001	2,104
Suite 4003	1,085
Suite 5001	1,027
Suite 5010	2,791

WILL FRAME
253.722.1412
will.frame@kidder.com

DREW FRAME
253.722.1433
drew.frame@kidder.com

KIDDER.COM

This information supplied herein is from sources we deem reliable. It is provided without any representation, warranty, or guarantee, expressed or implied as to its accuracy. Prospective Buyer or Tenant should conduct an independent investigation and verification of all matters deemed to be material, including, but not limited to, statements of income and expenses. Consult your attorney, accountant, or other professional advisor.

km Kidder Mathews

FOR LEASE

Allenmore B Medical Office Building

1901 S UNION AVE | TACOMA, WA



KIDDER.COM

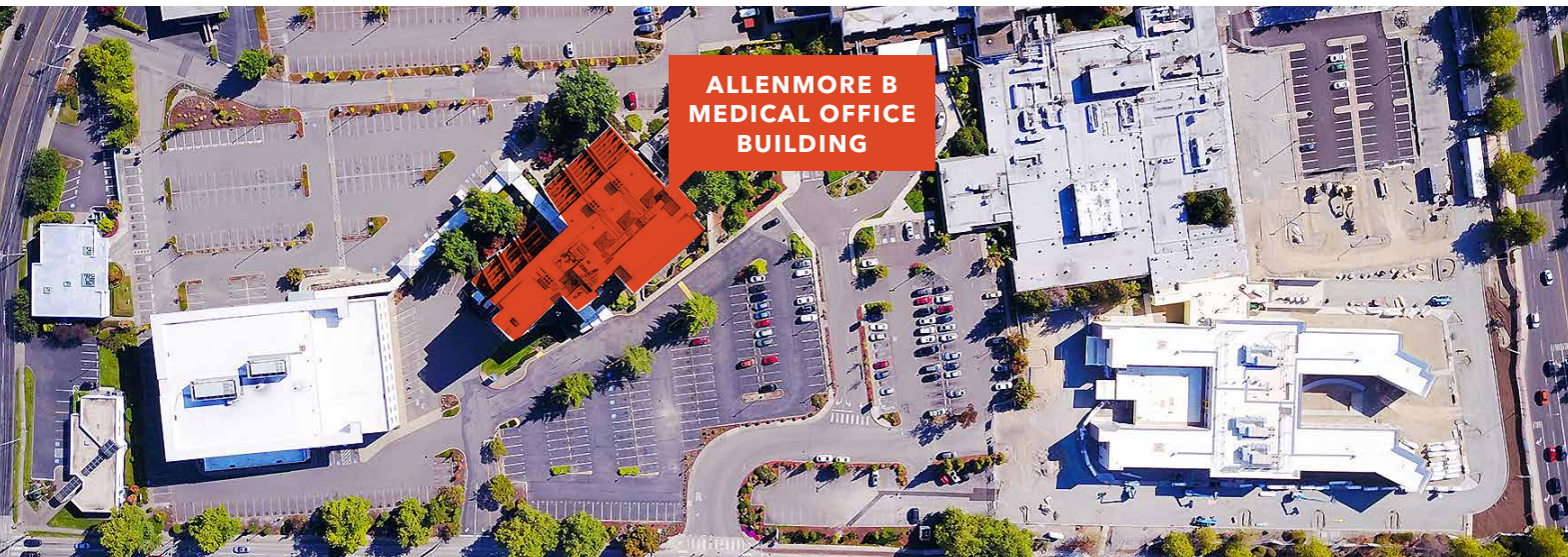
This information supplied herein is from sources we deem reliable. It is provided without any representation, warranty, or guarantee, expressed or implied as to its accuracy. Prospective Buyer or Tenant should conduct an independent investigation and verification of all matters deemed to be material, including, but not limited to, statements of income and expenses. Consult your attorney, accountant, or other professional advisor.

km Kidder Mathews

FOR LEASE

Allenmore B Medical Office Building

1901 S UNION AVE | TACOMA, WA



**ALLENMORE B
MEDICAL OFFICE
BUILDING**

WILL FRAME
253.722.1412
will.frame@kidder.com

DREW FRAME
253.722.1433
drew.frame@kidder.com

KIDDER.COM

This information supplied herein is from sources we deem reliable. It is provided without any representation, warranty, or guarantee, expressed or implied as to its accuracy. Prospective Buyer or Tenant should conduct an independent investigation and verification of all matters deemed to be material, including, but not limited to, statements of income and expenses. Consult your attorney, accountant, or other professional advisor.

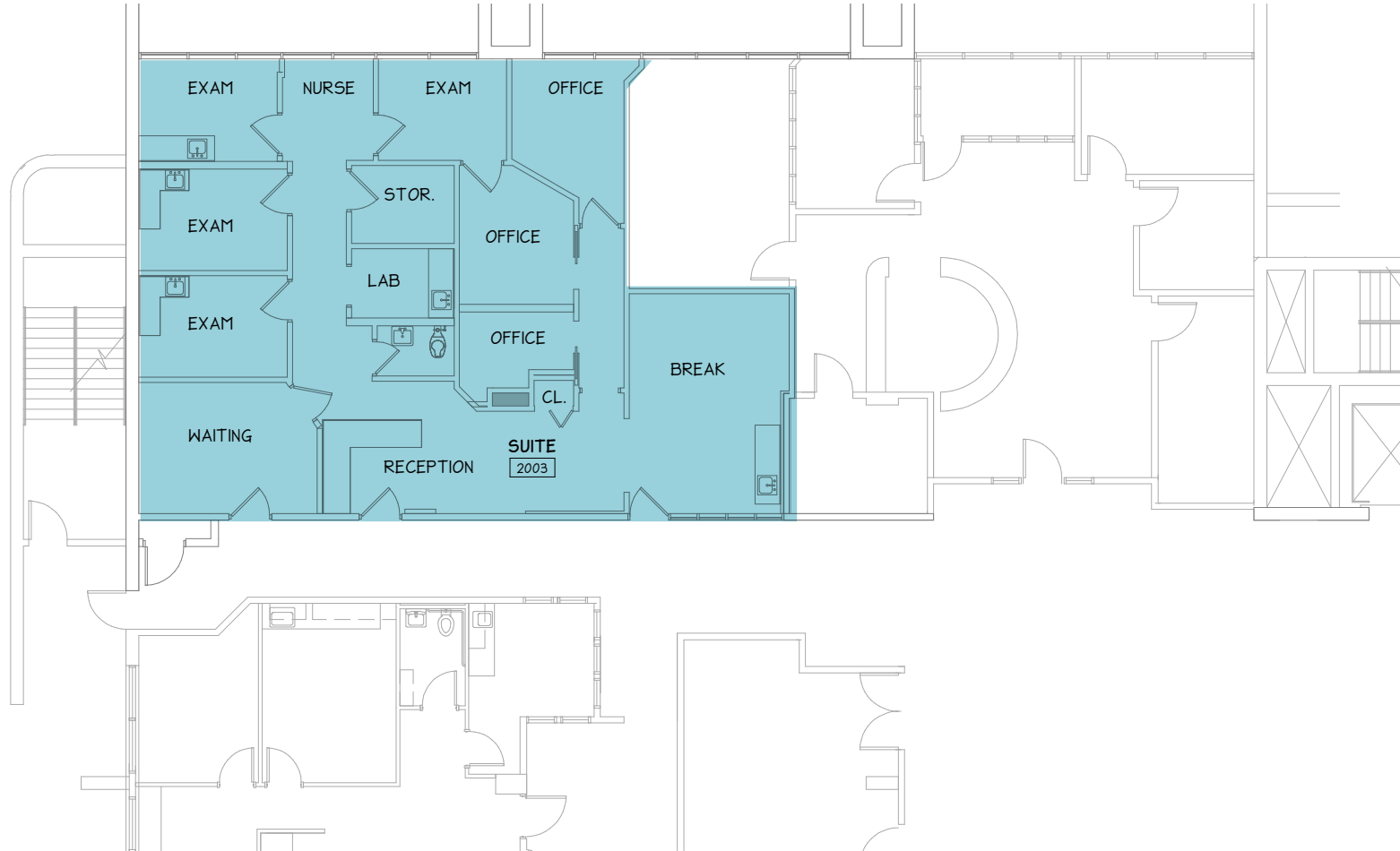
km Kidder
Mathews

FOR LEASE

Allenmore B Medical Office Building

1901 S UNION AVE | TACOMA, WA

Suite 2003 - 2,026 SF



KIDDER.COM

This information supplied herein is from sources we deem reliable. It is provided without any representation, warranty, or guarantee, expressed or implied as to its accuracy. Prospective Buyer or Tenant should conduct an independent investigation and verification of all matters deemed to be material, including, but not limited to, statements of income and expenses. Consult your attorney, accountant, or other professional advisor.



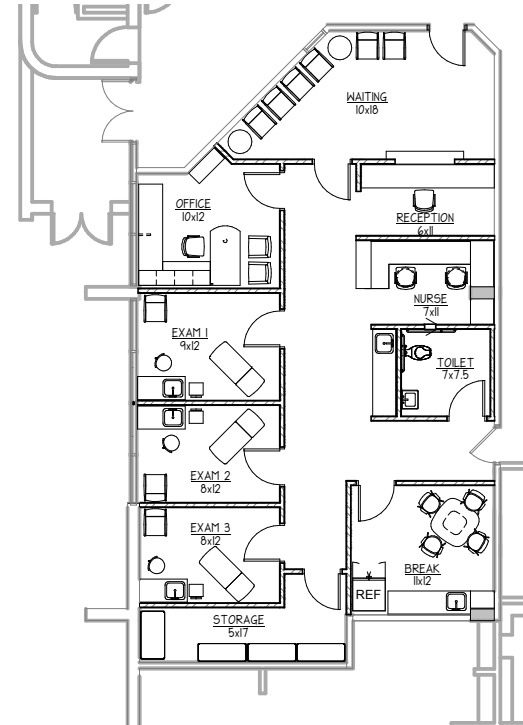
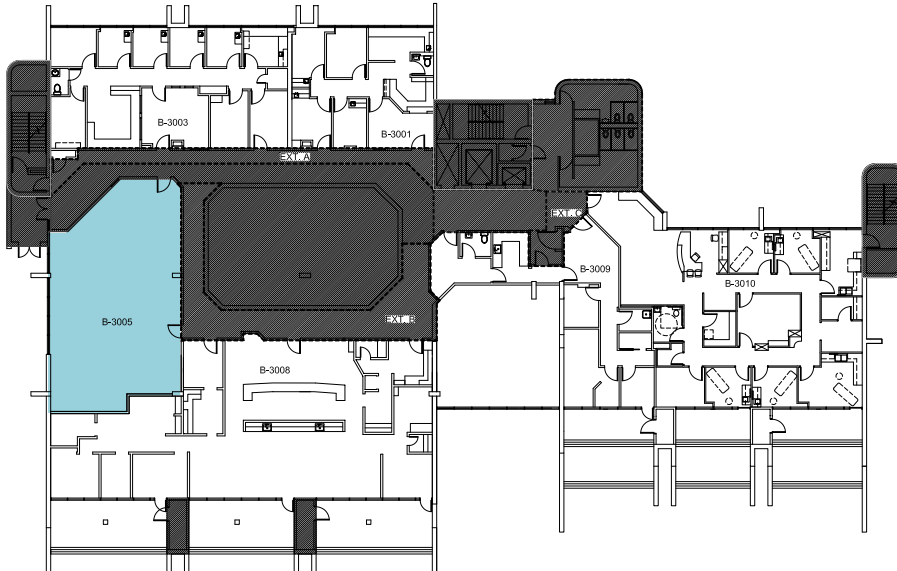
FOR LEASE

Allenmore B Medical Office Building

1901 S UNION AVE | TACOMA, WA

Suite 3005 - 1,840 SF

Test Fit



KIDDER.COM

This information supplied herein is from sources we deem reliable. It is provided without any representation, warranty, or guarantee, expressed or implied as to its accuracy. Prospective Buyer or Tenant should conduct an independent investigation and verification of all matters deemed to be material, including, but not limited to, statements of income and expenses. Consult your attorney, accountant, or other professional advisor.

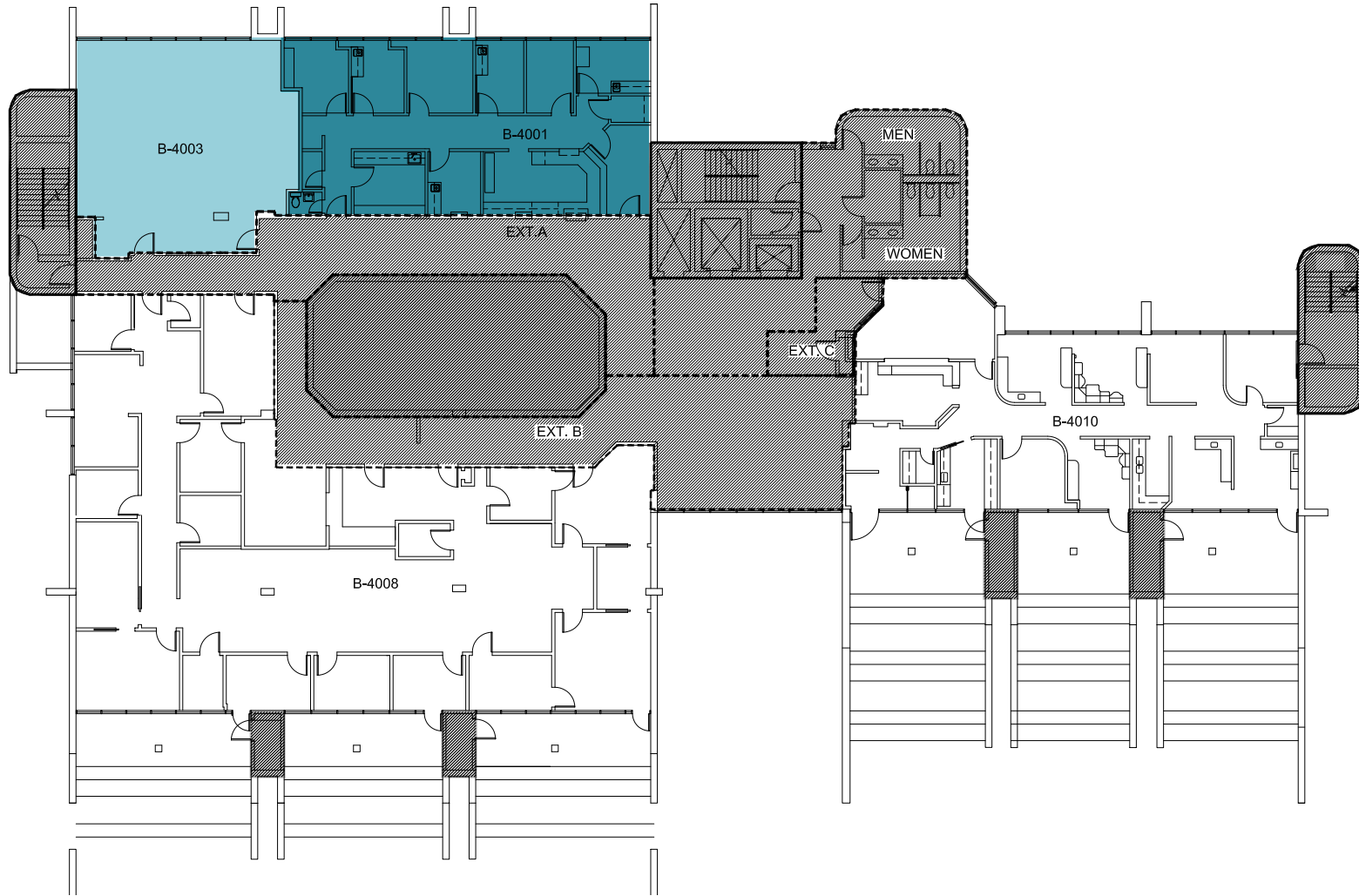


FOR LEASE

Allenmore B Medical Office Building

1901 S UNION AVE | TACOMA, WA

Suite 4001 - 2,104 SF | Suite 4003 - 1,085 SF | Contiguous - 3,189 SF



KIDDER.COM

This information supplied herein is from sources we deem reliable. It is provided without any representation, warranty, or guarantee, expressed or implied as to its accuracy. Prospective Buyer or Tenant should conduct an independent investigation and verification of all matters deemed to be material, including, but not limited to, statements of income and expenses. Consult your attorney, accountant, or other professional advisor.

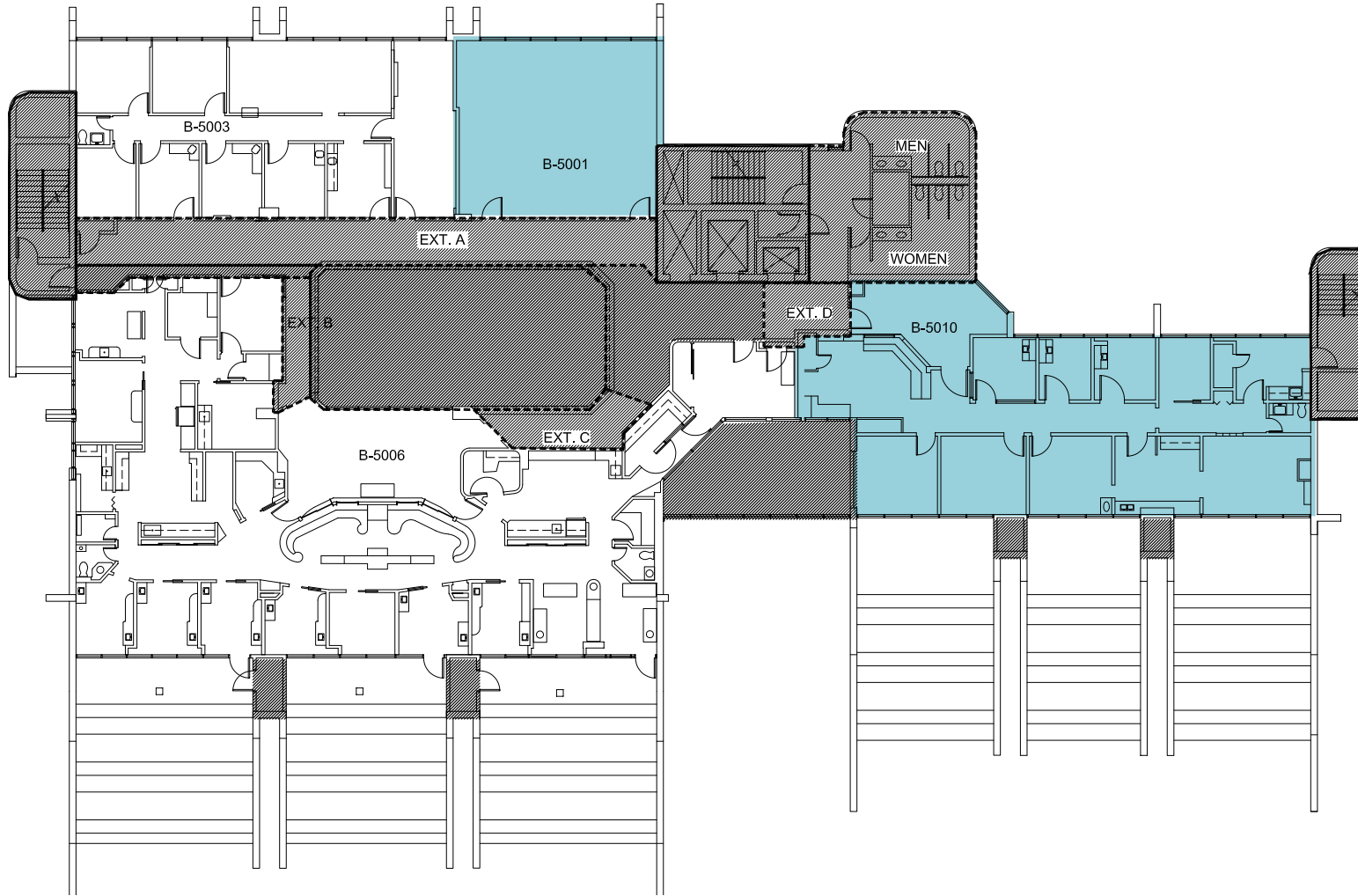
km Kidder Mathews

FOR LEASE

Allenmore B Medical Office Building

1901 S UNION AVE | TACOMA, WA

Suite 5001 - 1,027 SF | Suite 5010 - 2,820 SF



KIDDER.COM

This information supplied herein is from sources we deem reliable. It is provided without any representation, warranty, or guarantee, expressed or implied as to its accuracy. Prospective Buyer or Tenant should conduct an independent investigation and verification of all matters deemed to be material, including, but not limited to, statements of income and expenses. Consult your attorney, accountant, or other professional advisor.

km Kidder Mathews