

**Kimler**

109-125 Weldon Parkway

Maryland Heights, MO 63043

## 2,484 SF OFFICE / WAREHOUSE SPACE AVAILABLE FOR LEASE



- **2,484 SF Available**
- 121 Weldon Parkway
- 75% office buildout
- Dock loading
- Excellent parking
- 16' ceiling height
- Great visibility on Weldon Parkway with easy access to Page Ave, Dorsett Road and I-270
- Convenient Westport location with access to a variety of dining, entertainment and lodging venues
- **LEASE RATE: \$6.25 PSF NNN**

## HUTKIN DEVELOPMENT COMPANY

10829 Olive Boulevard  
Suite 200  
St. Louis, MO 63141

Telephone 314.872.9140  
FAX 314.872.9001

Visit our website:  
[www.hutkin.com](http://www.hutkin.com)

### CONTACT

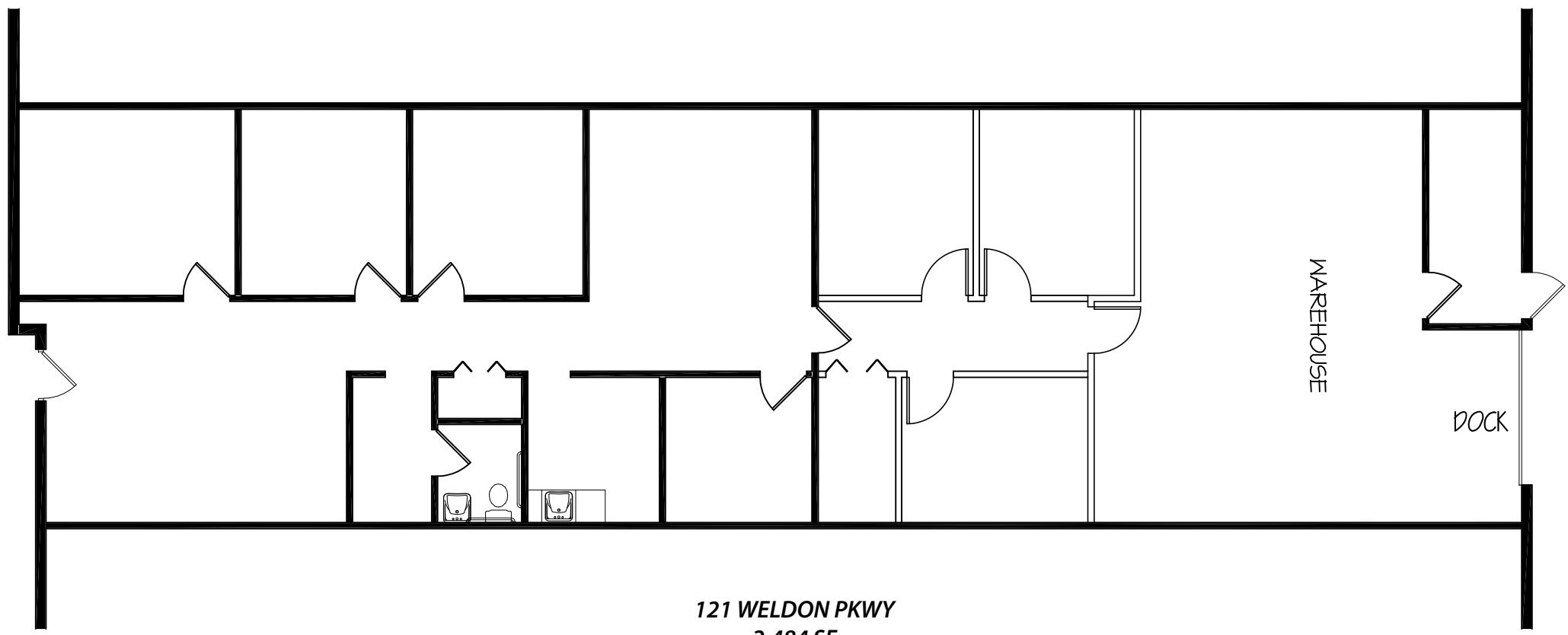
Bo Keefer  
[bkeefer@hutkin.com](mailto:bkeefer@hutkin.com)  
Direct 314.708.1258  
Cell 314.973.1242

Tony Giarratano  
[tony@hutkin.com](mailto:tony@hutkin.com)  
Direct 314.708.4922  
Cell 314.276.2352

**Kimler**

109-125 Weldon Parkway  
Maryland Heights, MO 63043

**2,484 SF OFFICE / WAREHOUSE SPACE  
AVAILABLE FOR LEASE**



121 WELDON PKWY  
2,484 SF



**Kimler**

109-125 Weldon Parkway  
Maryland Heights, MO 63043

**2,484 SF OFFICE / WAREHOUSE SPACE  
AVAILABLE FOR LEASE**

