

Baldev Business Center Vacant Land for Sale

5715 W Donges Bay Rd. & 10325 N Baldev Ct.
Mequon, WI 53092



Situated in the Mequon Business Park

Brian Parrish, MBA, SIOR
President & CEO
brian@paradigmre.com

(262) 717 - 5151

Jim Johnson
Real Estate Advisor
jim@paradigmre.com

paradigmre.com

11801 W. Silver Spring Dr.
Suite 100
Milwaukee, WI 53225

info@paradigmre.com



PROPERTY FEATURES

ADDRESS	5715 W Donges Bay Rd. & 10325 N Baldev Ct. Mequon, WI 53092
TOTAL AVAILABLE	19.244 Acres
MIN. DIVISIBLE	4.244 Acres
PARCEL A	Not for Sale - 12,800 Sq. Ft. available for lease
PARCEL B	15 acres*
PARCEL C	4.244 acres
ZONING	B-5

* Subject to new CSM

FINANCIAL SUMMARY

OFFERING PRICE	\$90,000/acre - Parcel B
	\$140,000/acre - Parcel C

DEMOGRAPHICS

	1 MILE	3 MILE	5 MILE
2020 Population	2,269	41,420	93,315



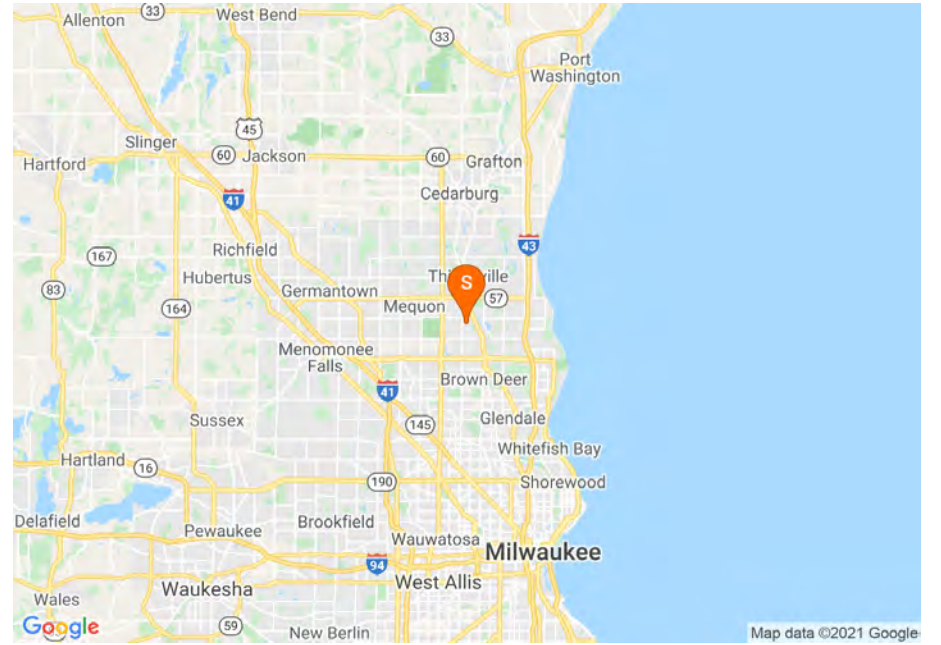
- Regional stormwater pond in place to maximize buildable area
- Utilities: Municipal Water and Sewer (private lift)
- Wetland delineation and stormwater management report available upon request
- Situated along the Ozaukee Interurban Trail and other great amenities
- New 47 acre business park contiguous and effectively part of the Mequon Business Park



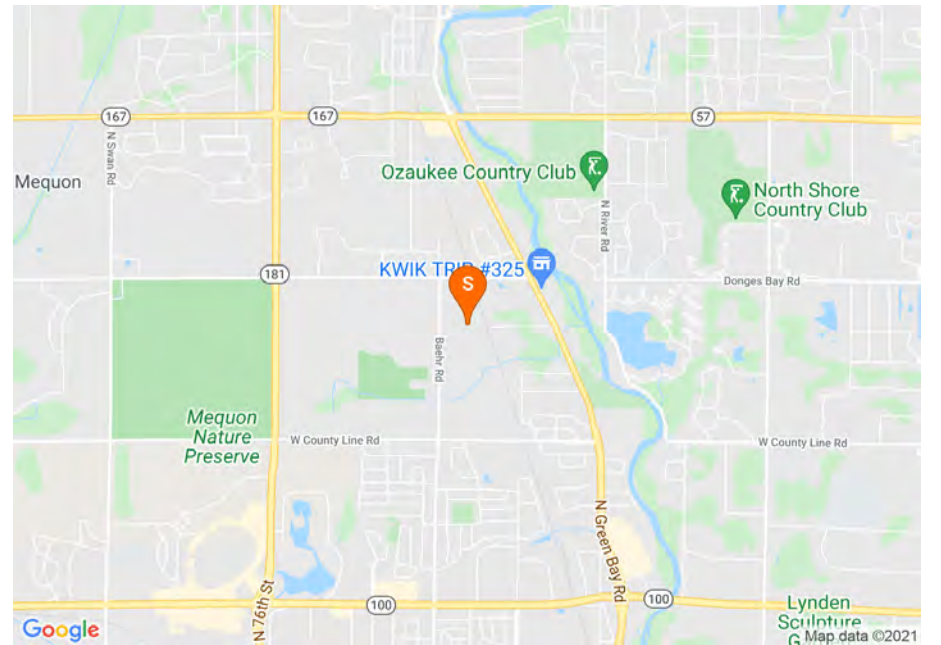
Parcel Information



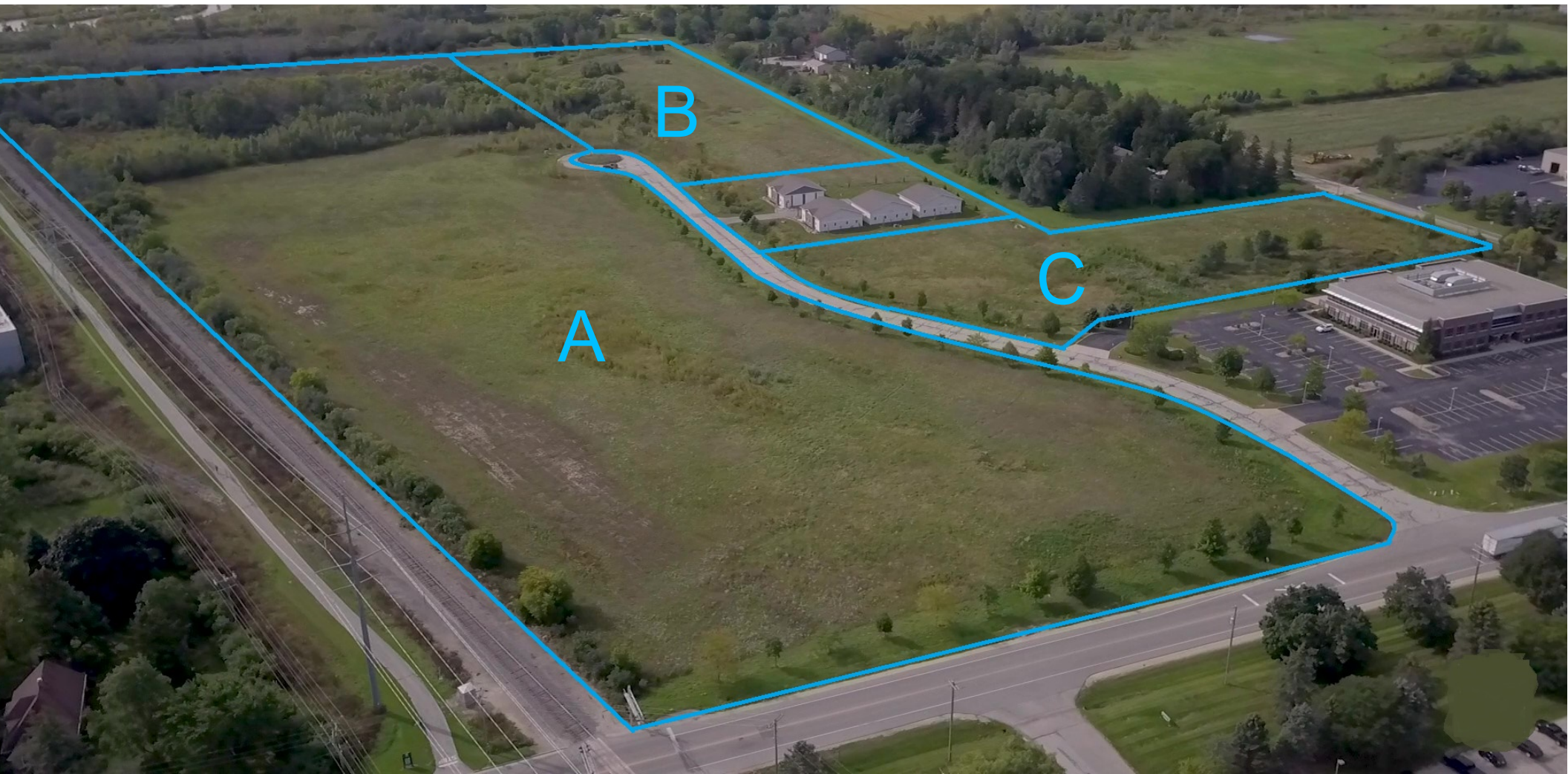
Regional Map



Locator Map



PARCEL A	Not for Sale - 12,800 Sq. Ft. available for lease
PARCEL B	15 acres (subject to new CSM)
PARCEL C	4.244 acres



NW CORNER
SEC. 35-9-21
CONC. MON.
W/BRASS CAP
FND

DONGES BAY ROAD
(100' WIDE PUBLIC RIGHT OF WAY)
NORTH LINE OF THE NORTHWEST 1/4 OF SECTION 35-9-21 N 89°04'36" E

ALL BEARINGS REFER TO THE
SOUTH LINE OF THE
NORTHWEST 1/4 OF SECTION
35-9-21, WHICH HAS A
WISCONSIN STATE PLANE
COORDINATE SYSTEM (SOUTH
ZONE)(REVISION DEC. 2011
DATUM NAD 27) BEARING OF
S 89°21'11" E



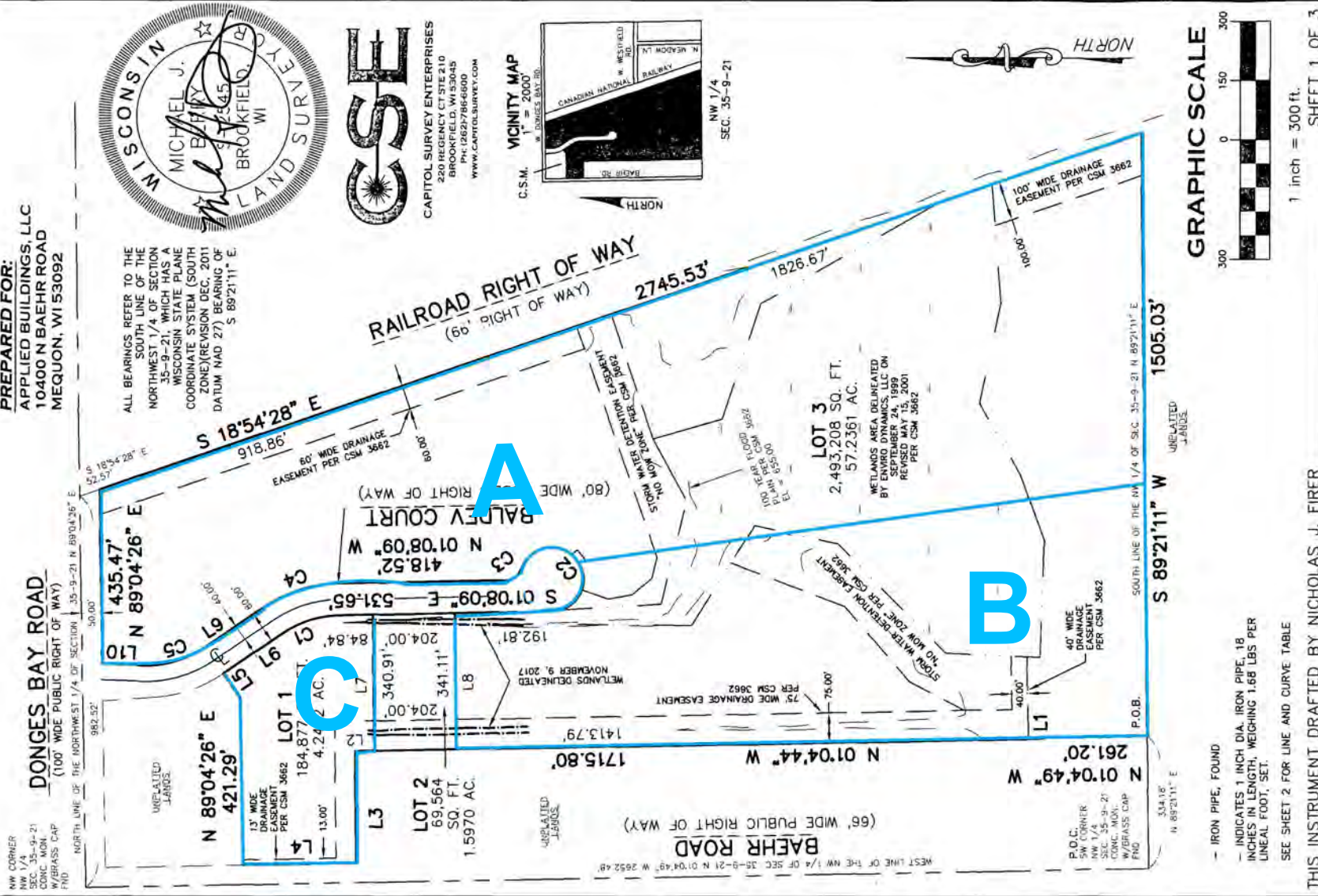
CAPITOL SURVEY ENTERPRISES
280 REGENCY CITY STE 210
BROOKFIELD, WI 53005
PH: (262) 786-6000
WWW.CAPITOLSURVEY.COM

VICINITY MAP
1" = 2000'



SEC. 35-9-21
NW 1/4

PREPARED FOR:
APPLIED BUILDINGS, LLC
10400 N BAEHR ROAD
MEQUON, WI 53092



- IRON PIPE, FOUND
- INDICATES 1 INCH DIA. IRON PIPE, 18 INCHES IN LENGTH, WEIGHING 1.68 LBS PER LINEAL FOOT, SET.
- SEE SHEET 2 FOR LINE AND CURVE TABLE

THIS INSTRUMENT DRAFTED BY NICHOLAS J. FIRER

SHEET 1 OF 3

DISCLOSURE TO NON-RESIDENTIAL CUSTOMERS

1 Prior to negotiating on your behalf the brokerage firm, or an agent associated with the firm, must provide you the
2 following disclosure statement:

3 **DISCLOSURE TO CUSTOMERS** You are a customer of the brokerage firm (hereinafter Firm). The Firm is either an agent
4 of another party in the transaction or a subagent of another firm that is the agent of another party in the transaction. A
5 broker or a salesperson acting on behalf of the Firm may provide brokerage services to you. Whenever the Firm is
6 providing brokerage services to you, the Firm and its brokers and salespersons (hereinafter Agents) owe you, the
7 customer, the following duties:

8 (a) The duty to provide brokerage services to you fairly and honestly.
9 (b) The duty to exercise reasonable skill and care in providing brokerage services to you.
10 (c) The duty to provide you with accurate information about market conditions within a reasonable time if you request
11 it, unless disclosure of the information is prohibited by law.
12 (d) The duty to disclose to you in writing certain Material Adverse Facts about a property, unless disclosure of the
13 information is prohibited by law (see lines 42-51).
14 (e) The duty to protect your confidentiality. Unless the law requires it, the Firm and its Agents will not disclose your
15 confidential information or the confidential information of other parties (see lines 23-41).
16 (f) The duty to safeguard trust funds and other property held by the Firm or its Agents.
17 (g) The duty, when negotiating, to present contract proposals in an objective and unbiased manner and disclose the
18 advantages and disadvantages of the proposals.

19 Please review this information carefully. An Agent of the Firm can answer your questions about brokerage services,
20 but if you need legal advice, tax advice, or a professional home inspection, contact an attorney, tax advisor, or home
21 inspector. This disclosure is required by section 452.135 of the Wisconsin statutes and is for information only. It is a
22 plain-language summary of the duties owed to a customer under section 452.133(1) of the Wisconsin statutes.

23 **CONFIDENTIALITY NOTICE TO CUSTOMERS** The Firm and its Agents will keep confidential any information given to the
24 Firm or its Agents in confidence, or any information obtained by the Firm and its Agents that a reasonable person
25 would want to be kept confidential, unless the information must be disclosed by law or you authorize the Firm to
26 disclose particular information. The Firm and its Agents shall continue to keep the information confidential after the
27 Firm is no longer providing brokerage services to you.

28 The following information is required to be disclosed by law:

29 1. Material Adverse Facts, as defined in Wis. Stat. § 452.01(5g) (see lines 42-51).

30 2. Any facts known by the Firm or its Agents that contradict any information included in a written inspection
31 report on the property or real estate that is the subject of the transaction.

32 To ensure that the Firm and its Agents are aware of what specific information you consider confidential, you may
33 list that information below (see lines 35-41) or provide that information to the Firm or its Agents by other means. At a
34 later time, you may also provide the Firm or its Agents with other Information you consider to be confidential.

35 **CONFIDENTIAL INFORMATION:** _____
36 _____
37 _____

38 **NON-CONFIDENTIAL INFORMATION** (the following information may be disclosed by the Firm and its Agents): _____
39 _____
40 _____

41 _____ (Insert information you authorize to be disclosed, such as financial qualification information.)

DEFINITION OF MATERIAL ADVERSE FACTS

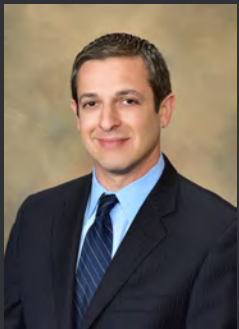
43 A "Material Adverse Fact" is defined in Wis. Stat. § 452.01(5g) as an Adverse Fact that a party indicates is of such
44 significance, or that is generally recognized by a competent licensee as being of such significance to a reasonable
45 party, that it affects or would affect the party's decision to enter into a contract or agreement concerning a transaction
46 or affects or would affect the party's decision about the terms of such a contract or agreement.

47 An "Adverse Fact" is defined in Wis. Stat. § 452.01(1e) as a condition or occurrence that a competent licensee
48 generally recognizes will significantly and adversely affect the value of the property, significantly reduce the structural
49 integrity of improvements to real estate, or present a significant health risk to occupants of the property; or information
50 that indicates that a party to a transaction is not able to or does not intend to meet his or her obligations under a
51 contract or agreement made concerning the transaction.

52 **NOTICE ABOUT SEX OFFENDER REGISTRY** You may obtain information about the sex offender registry and persons
53 registered with the registry by contacting the Wisconsin Department of Corrections on the internet at
54 <http://www.doc.wi.gov> or by telephone at 608-240-5830.

No representation is made as to the legal validity of any provision or the adequacy of any provision in any specific transaction.
Copyright © 2016 by Wisconsin REALTORS® Association
Drafted by Attorney Debra Peterson Conrad

Baldev Business Center Vacant Land for Sale



Brian Parrish, MBA, SIOR
President & CEO
brian@paradigmre.com



Jim Johnson
Real Estate Advisor
jim@paradigmre.com



11801 W Silver Spring Dr., Suite 100
Milwaukee, WI 53225

(262) 717 - 5151
PARADIGMre.com

All information in this marketing package was obtained by 3rd Parties and subject to verification. Broker makes no warranties or representations about the enclosed information.