

Trophy II Building

19620 Russell Road
Kent, WA

#1 Location in Kent

11,000 SF total

2,706 SF office

\$0.68 PSF shell

\$0.85 PSF office add-on

Incredible exposure/identity

24' clear

Heavy power

Mezzanine storage

4 dock-high doors

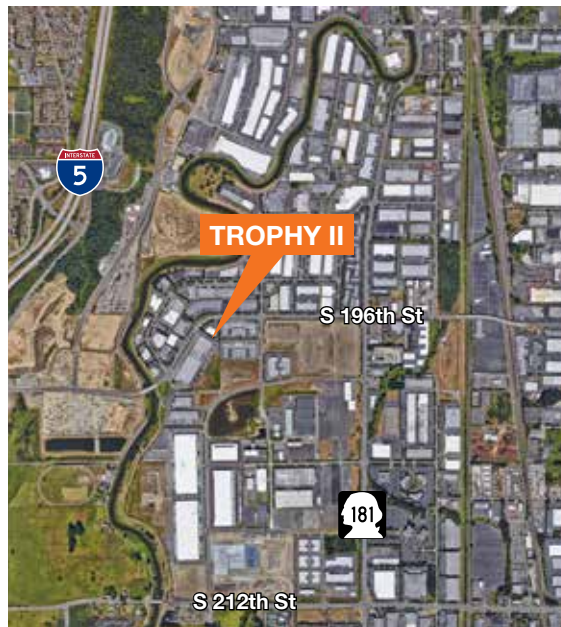
1 grade-level door

Available February 1, 2019

Layout shown on back



Location



Contact

Christopher J. Corr, SIOR

206.248.7324

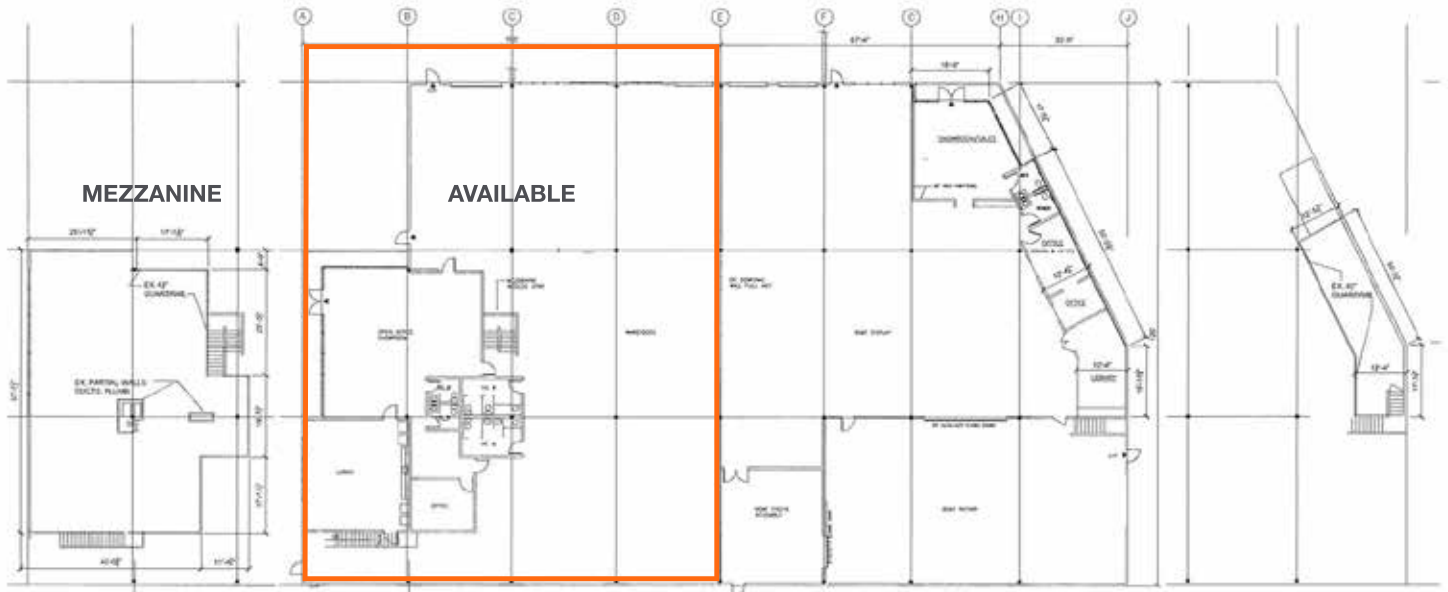
ccorr@kiddermathews.com

Jim Kidder, SIOR

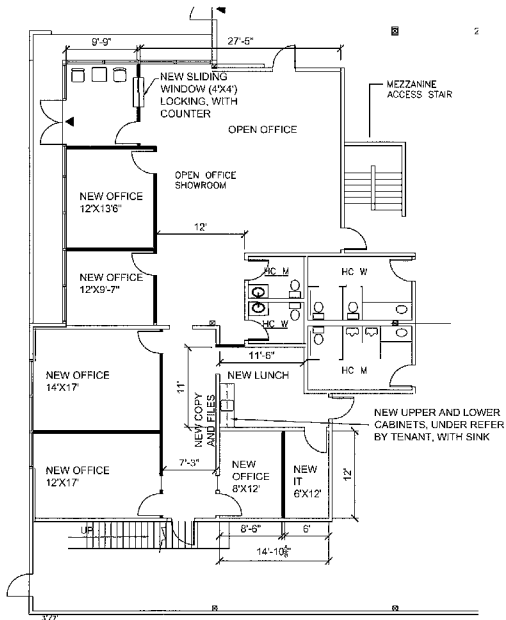
206.248.7328

jkidder@kiddermathews.com

Trophy II Building



CURRENT OFFICE BUILDOUT



Contact

Christopher J. Corr, SIOR
 206.248.7324
 ccorr@kiddermathews.com

Jim Kidder, SIOR
 206.248.7328
 jkidder@kiddermathews.com