

# 16E40THSTREET

ENTIRE 12TH FLOOR / **7,800 RSF**

ENTIRE 11TH FLOOR / **7,800 RSF**

ENTIRE 3RD FLOOR / **7,800 RSF**

## POSSESSION:

12th Floor: Available April 2019

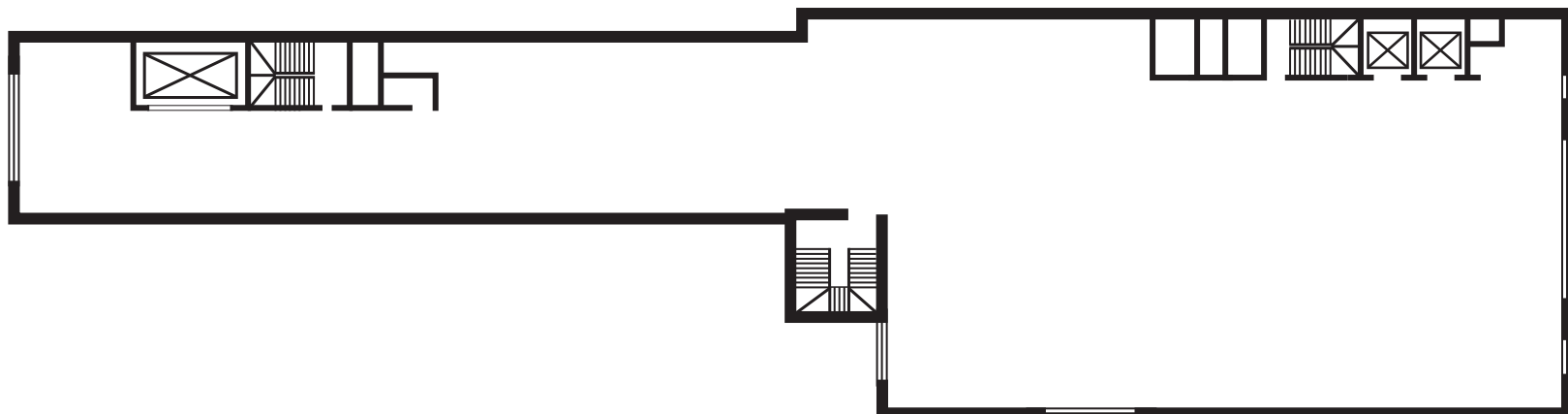
11th Floor: Immediate

3rd Floor: Immediate

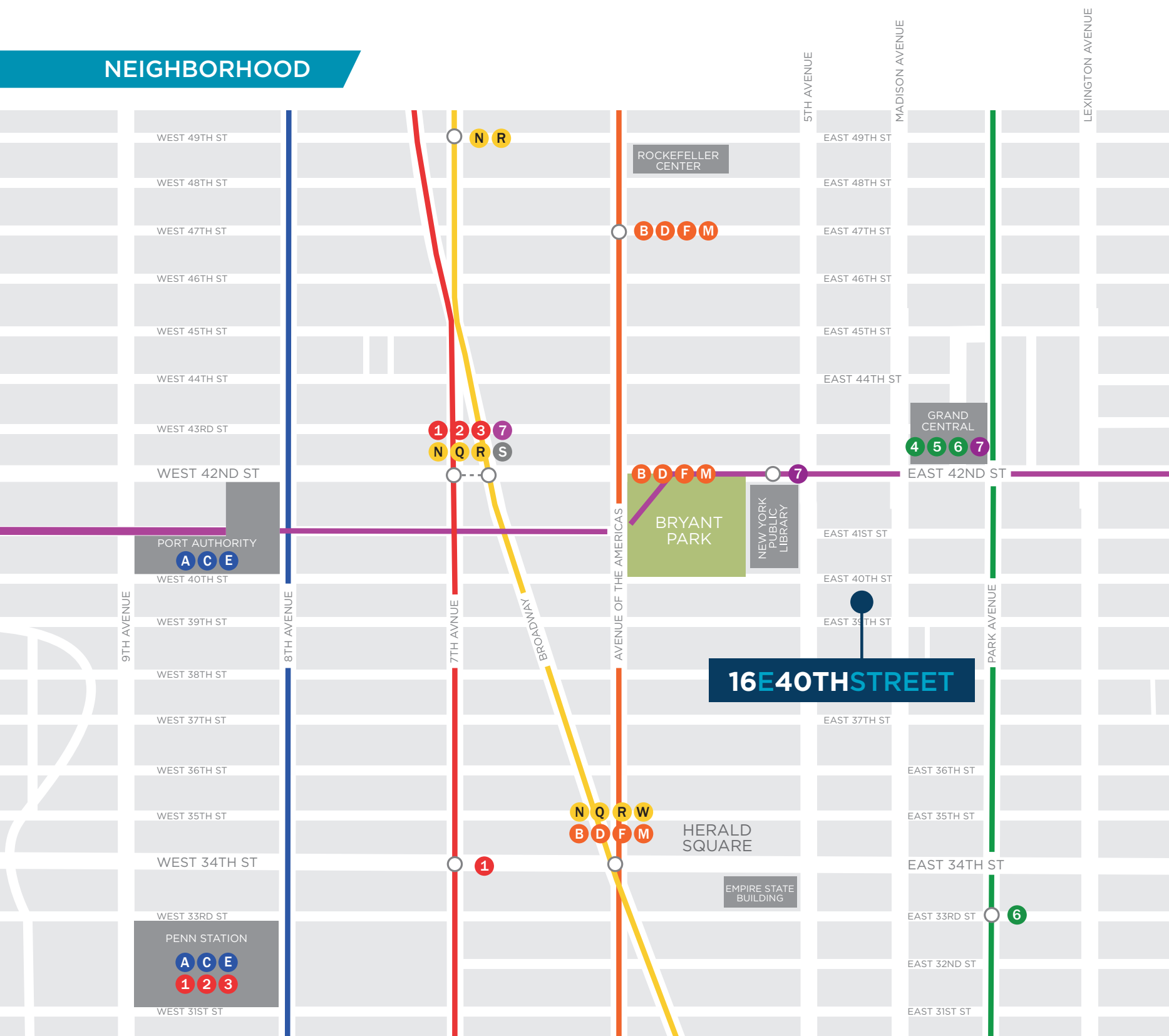
## HIGHLIGHTS:

- Renovated lobby slated to begin April 2018
- Efficient full floor identity
- Close proximity to Grand Central Station
- Walking distance to Bryant Park
- 11th floor in pristine white box condition
- Ownership will consider building
- 11' slab to slab ceilings
- Tenant controlled A/C
- Attended lobby and manned freight car on 39th street

## TYPICAL FLOOR PLAN:



## NEIGHBORHOOD



For more information, please contact:

MICHAEL BARALDI  
212 841 7626  
michael.baraldi@cushwake.com

JOSEPH SIMON  
212 841 7742  
joseph.simon@cushwake.com

GORDON L. HOUGH  
212 895 8927  
gordon.l.hough@cushwake.com



One-half of one full commission computed and earned in accordance with the rates and conditions of our agency agreement with our principal, when received from our principal, will be paid to the cooperating broker who consummates a lease which is unconditionally executed and delivered by and between lessor and lessee (a copy of the rates and conditions referred to above is available upon request).