

FOR SALE

Harrison Cabinet Shop

3880 Lake Street  
Macon, Bibb County, Georgia 31204



EBERHARDT & BARRY



- 3,100± SF Office / Warehouse / Shop
- Former cabinet shop - Equipment included  
(See Page 2)
- Built in 1966; interior renovations in 1987
- .24Acres; 50' road frontage X 208' depth
- 10' ceiling height
- Zoned M1, Light Industrial
- All public utilities available to site.
- 2019 Tax Bill: \$1,167

**SALES PRICE: \$245,000**

**FOR MORE DETAILS CONTACT:**

Revised 1/1/20

**ARTHUR P BARRY III - EXCLUSIVE AGENT**  
**abarry@cbcworldwide.com**  
**Coldwell Banker Commercial Eberhardt & Barry Inc.**  
[www.cbcmacon.com](http://www.cbcmacon.com)

<b>Main</b>	478-746-8171	<b>Toll Free</b>	800-926-0990
<b>Fax</b>	478-746-1362	<b>Cell</b>	478-731-8000

990 Riverside Drive  
Macon, GA 31201



EBERHARDT & BARRY

3880 Lake Street - Macon, GA 31204

EQUIPMENT LIST

- Aireworks FX-200 700 dust collection system with associated duct work.
- Extrema Exceis Series XS-1A37 wide belt
- Omega T50-350 air assisted miter saw
- Omega FP4000 NC with 14 ft. digitally controlled automated fence
- Powermatic 15 in. thickness planar
- Crouch 300-A edge sander 6 in.
- Hoffman MU2 Dovetail miter machine
- Powermatic 6 in. Joiner
- Porter cable pocket hole machine
- Dewalt radial arm saw 14 in. (extended arm)
- William Hussey molder model W75 (profile knives)
- Delta drill press 16 1/2 in.
- Atlas Copco GX7 FF
- CA Technologies CAT5 spray system
- Cosmec Conquest 510 CNC
- 2 ea Rietschle VTB 250 vacuum pumps





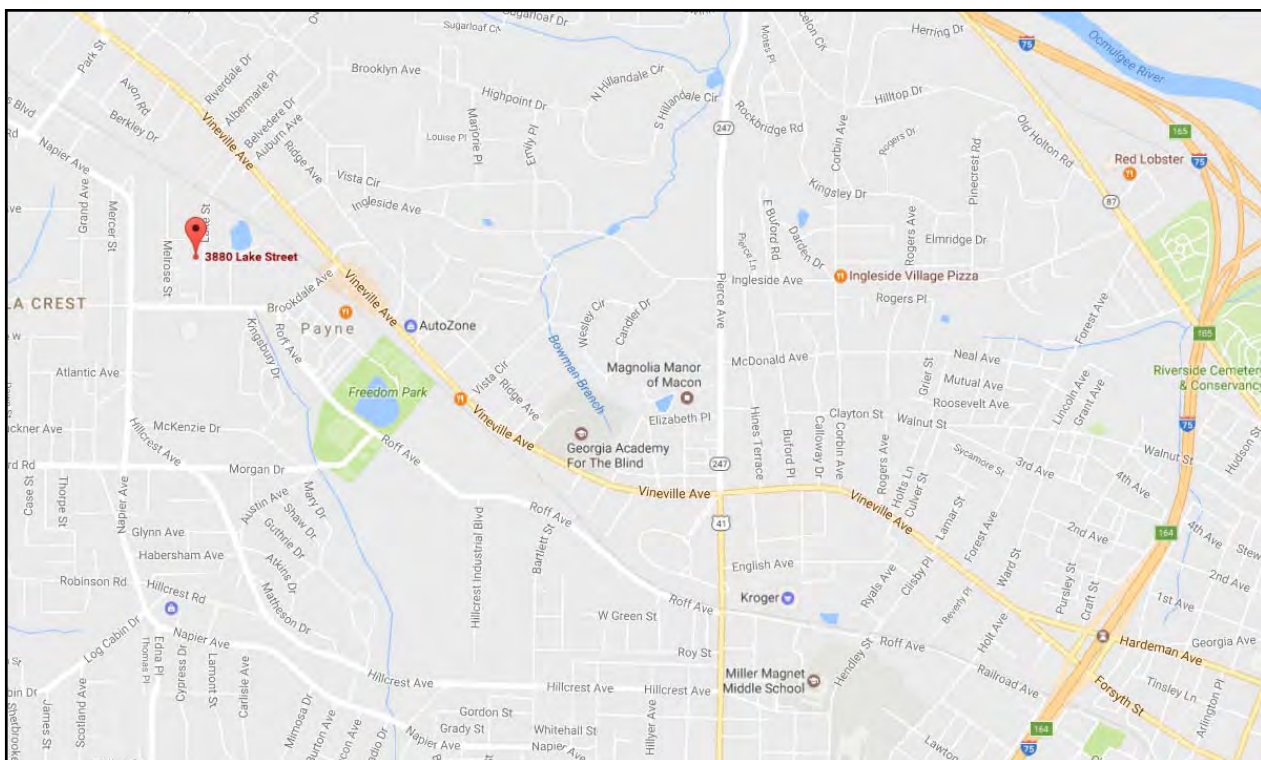
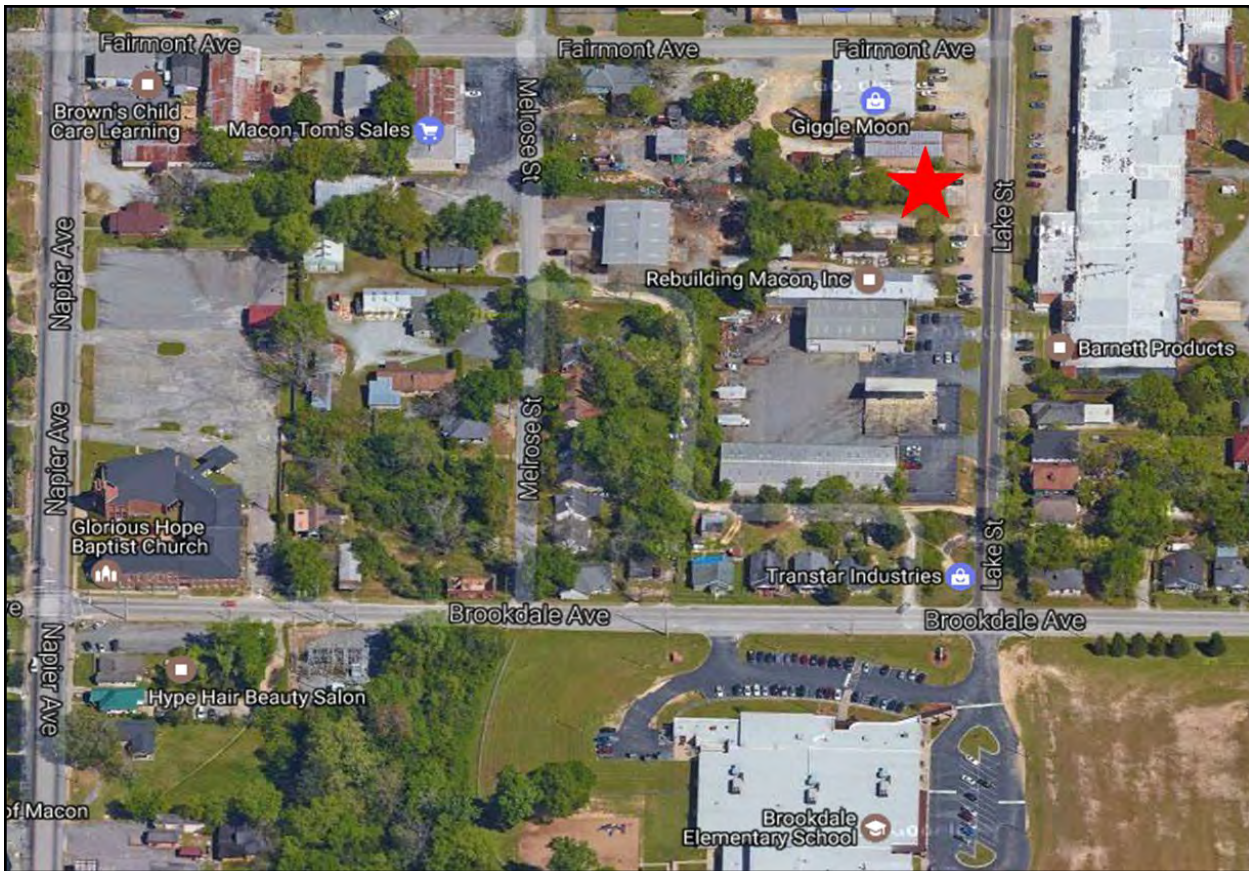






3880 Lake Street - Macon, GA 31204

MAPS





**KEY FACTS**
**154,840**

Population

**37.1**

Median Age

**2.5**

Average Household Size

**\$40,391**

Median Household Income

**EDUCATION**
**14%**

No High School Diploma


**32%**

High School Graduate


**27%**

Some College


**27%**

Bachelor's/Grad/Prof Degree

**BUSINESS**

**6,656**

Total Businesses


**92,217**

Total Employees

**EMPLOYMENT**

**64%**

White Collar


**17%**

Blue Collar


**19%**

Services

**7.0%**

Unemployment Rate

**INCOME**

**\$40,391**

Median Household Income


**\$25,029**

Per Capita Income


**\$35,547**

Median Net Worth

**Households By Income**

The largest group: &lt;\$15,000 (17.7%)

The smallest group: \$150,000 - \$199,999 (3.1%)

Indicator	Value	Difference
<\$15,000	17.7%	0
\$15,000 - \$24,999	13.5%	0
\$25,000 - \$34,999	12.0%	+0.1%
\$35,000 - \$49,999	15.5%	0
\$50,000 - \$74,999	14.3%	0
\$75,000 - \$99,999	8.7%	0
\$100,000 - \$149,999	10.7%	0
\$150,000 - \$199,999	3.1%	0
\$200,000+	4.5%	0

 Bars show deviation from  
Bibb County