

1,559 SF OFFICE  
SPACE AVAILABLE

# OFFICE SPACE FOR LEASE

687 S. Coast Highway 101 - Encinitas, CA 92024

## PROPERTY DETAILS

- 1,559 SF office space available
- Located in the heart of downtown Encinitas
- Walking distance from Encinitas Coaster Station
- Close proximity to various restaurants & retail shops
- 0.5 mile walk to the ocean
- Secured, underground parking
- Located just 3 blocks west from I-5
- **LEASE RATE: \$6.75 Gross**



For more info contact: Whitney Robinson | [whitney@rafpg.com](mailto:whitney@rafpg.com) | (858) 314-3116 ext. 107



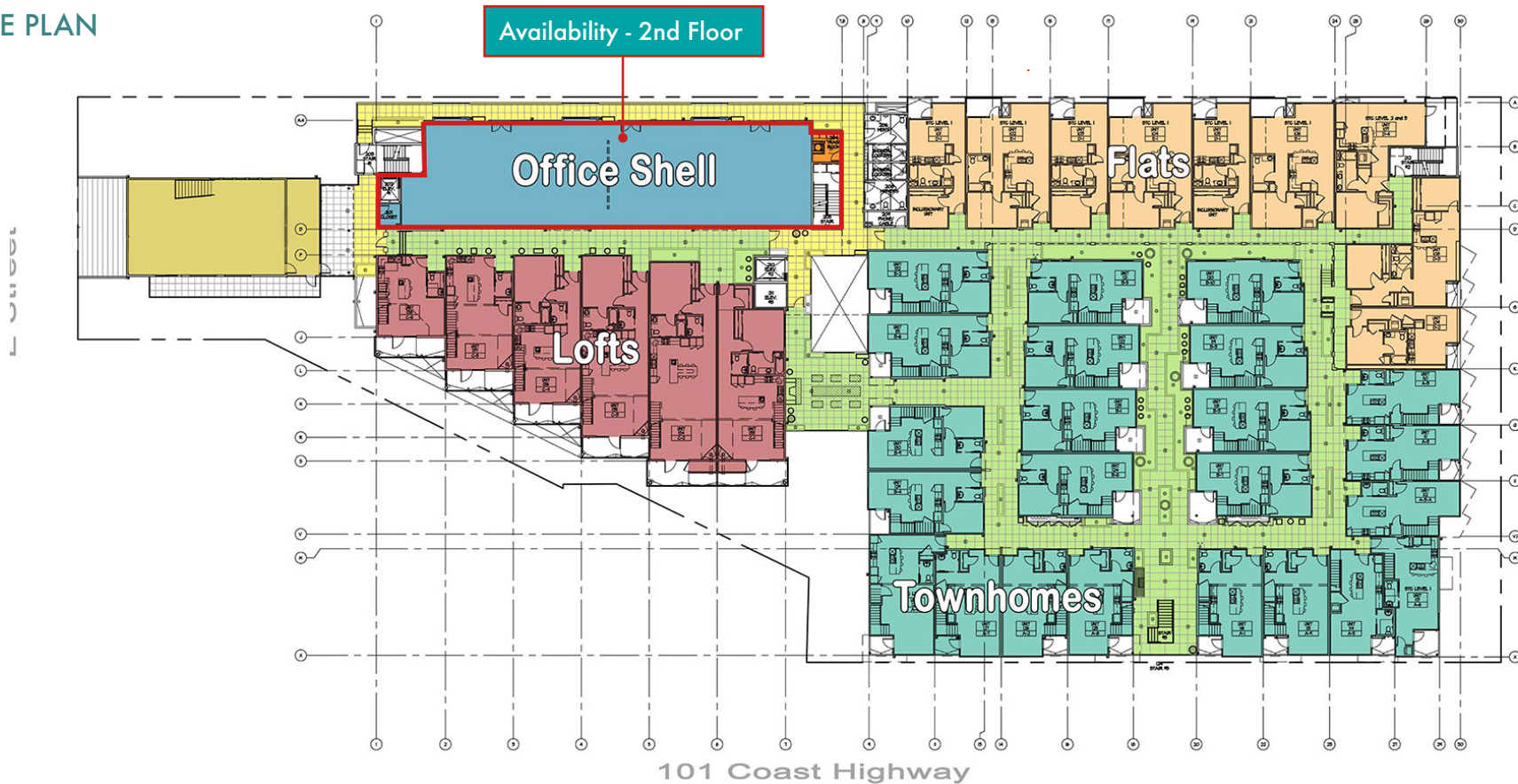
# OFFICE SPACE FOR LEASE

687 S. Coast Highway 101 - Encinitas, CA 92024

## AVAILABILITY CHART

Address	Suite	SF	Base Rent	Availability
687 S. Coast Hwy	239	1,559 SF	\$6.75 Gross	4/1/2022

## SITE PLAN



For more info contact: Whitney Robinson | [whitney@rafpg.com](mailto:whitney@rafpg.com) | (858) 314-3116 ext. 107

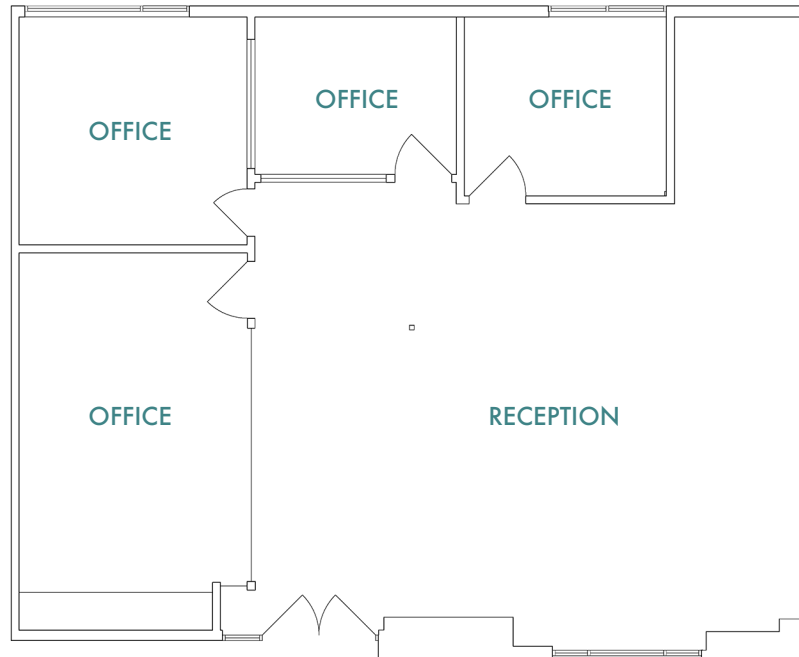
No warranty or representation is made to the accuracy of the foregoing information. Terms of sale or lease and availability are subject to change or withdrawal without notice. Any of the foregoing information will need to be separately verified by the buyer or tenant.



# OFFICE SPACE FOR LEASE

687 S. Coast Highway 101 - Encinitas, CA 92024

## FLOOR PLAN



## SUITE DESCRIPTION

**Building Address:** 687 S. Coast Hwy

**Suite:** 239

**Square Feet:** 1,559 SF

**Lease Rate:** \$6.75 Gross

**Comments:** Reception and 4 private offices

**Availability:** 4/1/2022

For more info contact: Whitney Robinson | [whitney@rafpg.com](mailto:whitney@rafpg.com) | (858) 314-3116 ext. 107

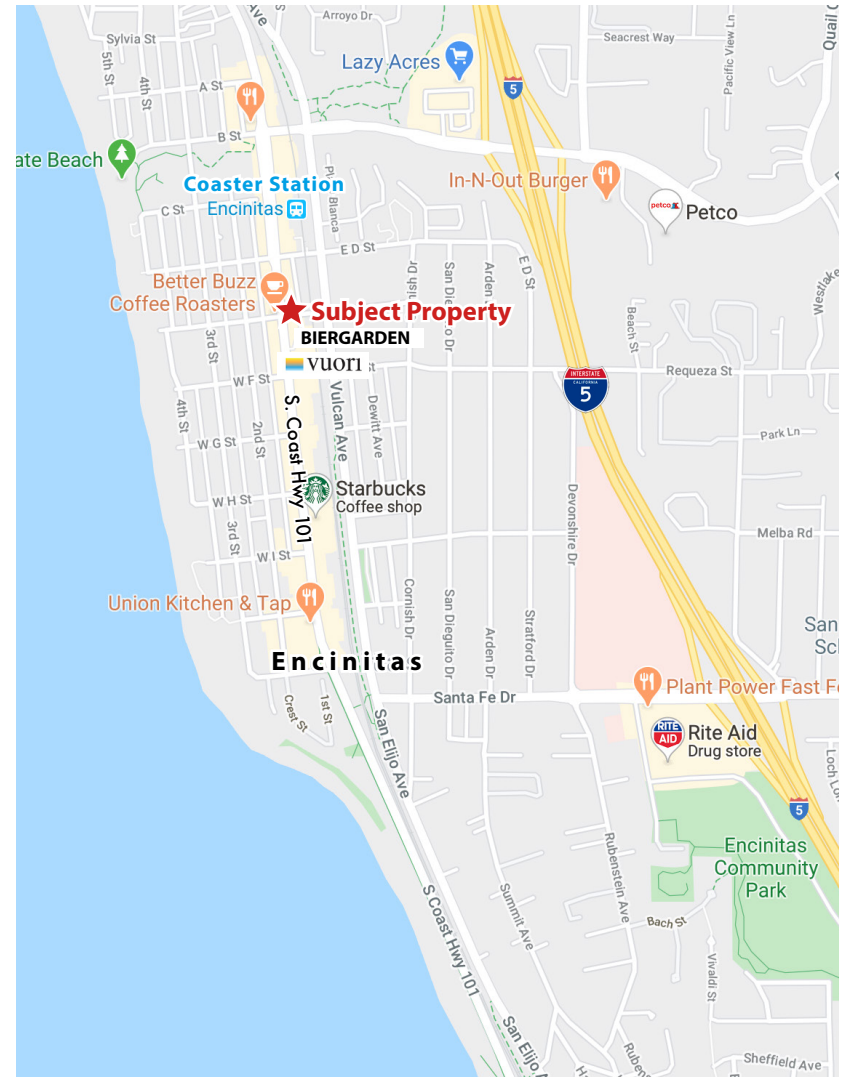
No warranty or representation is made to the accuracy of the foregoing information. Terms of sale or lease and availability are subject to change or withdrawal without notice. Any of the foregoing information will need to be separately verified by the buyer or tenant.



# OFFICE SPACE FOR LEASE

687 S. Coast Highway 101 - Encinitas, CA 92024

## AERIAL MAP



For more info contact: Whitney Robinson | [whitney@rafpg.com](mailto:whitney@rafpg.com) | (858) 314-3116 ext. 107

No warranty or representation is made to the accuracy of the foregoing information. Terms of sale or lease and availability are subject to change or withdrawal without notice. Any of the foregoing information will need to be separately verified by the buyer or tenant.