

# AVAILABLE FOR LEASE

Alexis Court  
332 W. Main St.  
Carpentersville, IL 60110

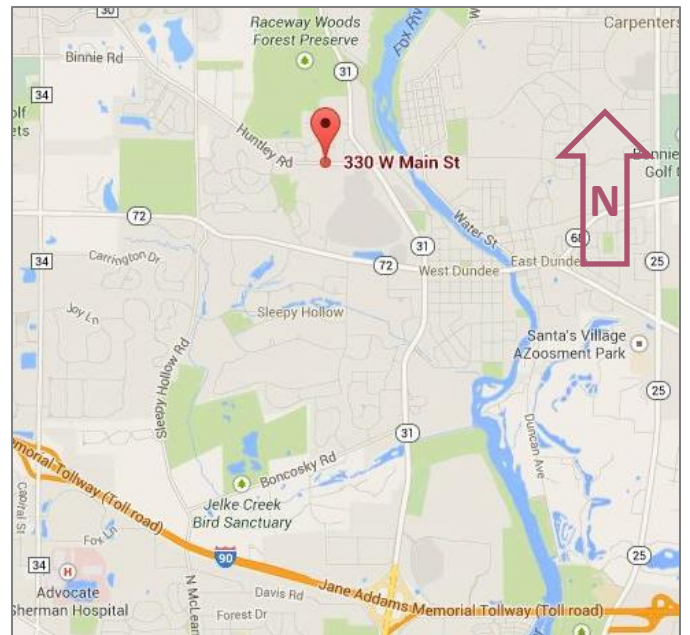


1,423 SF

RETAIL  
SPACE

\$7.99 PSF NNN

- 1,423 SF of retail space | Available now
- Private ADA washroom & back office
- Great visibility & location on W. Main Street (Huntley Rd.), just west of Rt. 31.
- High traffic, newer 15,000 sq. ft. neighborhood retail center, illuminated marquee sign in parkway.
- Professionally managed by Key Investment & Management Inc.



**KEY INVESTMENT  
& Management Inc.**

Office: 630.932.5757  
Fax: 630.932.5755  
1263 S. Highland Ave., Suite 2W,  
Lombard, IL 60148  
[www.key-investment.com](http://www.key-investment.com)

**FOR FURTHER INFORMATION CONTACT:**

Kimberly Hess

Office: 630.932.5757 Ext: 208

[khess@key-investment.com](mailto:khess@key-investment.com)

*Se Habla Español*

Real Estate

Brokerage

Leasing

Management

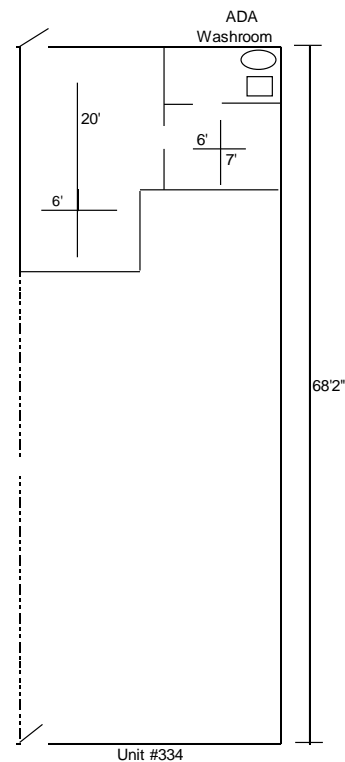
Alexis Court  
 332 W. Main St.  
 Carpentersville, IL 60110

1263 S. Highland Ave, Suite 2W  
 Lombard, IL 60148  
 Office: 630.932.5757 Ext: 208 Fax: 630.932.5755  
[www.key-investment.com](http://www.key-investment.com)  
 Kimberly Hess  
 khess@key-investment.com



# AVAILABLE FOR LEASE

PROPERTY SPECIFICATIONS	
Building Size:	15,547
Available Space:	1,423 SF
Year Built:	2002
Zoning:	C2
Parking:	Open lot
Ceiling Height:	10'
Power:	100 AMP – 2 Phase
Washrooms:	2 - ADA
Sprinklered:	Yes
Utilities:	Gas/Electric/ pro-rated Water & Sewer
Real Estate Taxes:	\$2.71 PSF
CAM:	\$3.75 PSF
Possession:	Immediately
Lease Term:	Minimum 2 years
<b>Lease Rate:</b>	<b>\$7.99 PSF NNN</b>



All dimensions are approximate. Drawing not to scale.



Real Estate

Brokerage

Leasing

Management