

RSM Health Center

22032 El Paseo, Rancho Santa Margarita, CA 92688



Bryan McKenney
(949) 478 - 0087 | LIC#01505792
Bryan@MedWestRealty.com

Casey P. Immel
(949) 278 - 5376 | LIC#01312850
Casey@MedWestRealty.com

Dental Suite Available

RSM Health Center

22032 El Paseo, Rancho Santa Margarita, CA 92688



FEATURES:

- 24,846± SF
- Lot Size 1.58± acres
- 2-Story Building
- Surface Parking
- Elevator Served
- Monument Signage Available
- Built in 2001
- Individual Package Units



RSM Health Center

22032 El Paseo, Rancho Santa Margarita, CA 92688

AERIAL VIEW:



RSM Health Center



Bryan McKenney
(949) 478 - 0087 | LIC#01505792
Bryan@MedWestRealty.com

Casey P. Immel
(949) 278 - 5376 | LIC#01312850
Casey@MedWestRealty.com

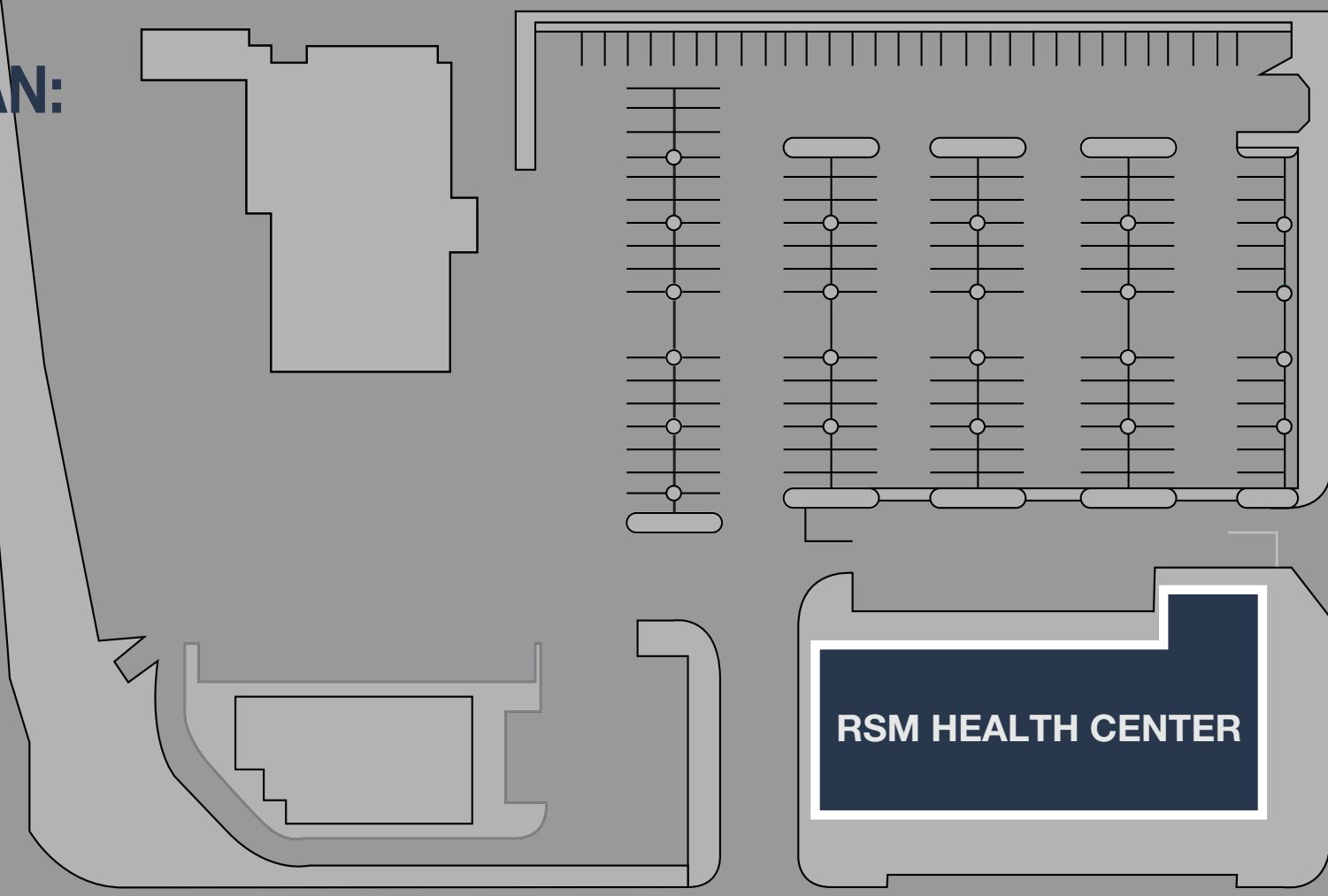
Dental Suite Available

RSM Health Center

22032 El Paseo, Rancho Santa Margarita, CA 92688

SITE PLAN:

SANTA MARGARITA PKWY



LA MIRANDA

EL PASEO

RSM Health Center

22032 El Paseo, Rancho Santa Margarita, CA 92688

FLOOR PLAN

1st Floor

AVAILABLE SUITE

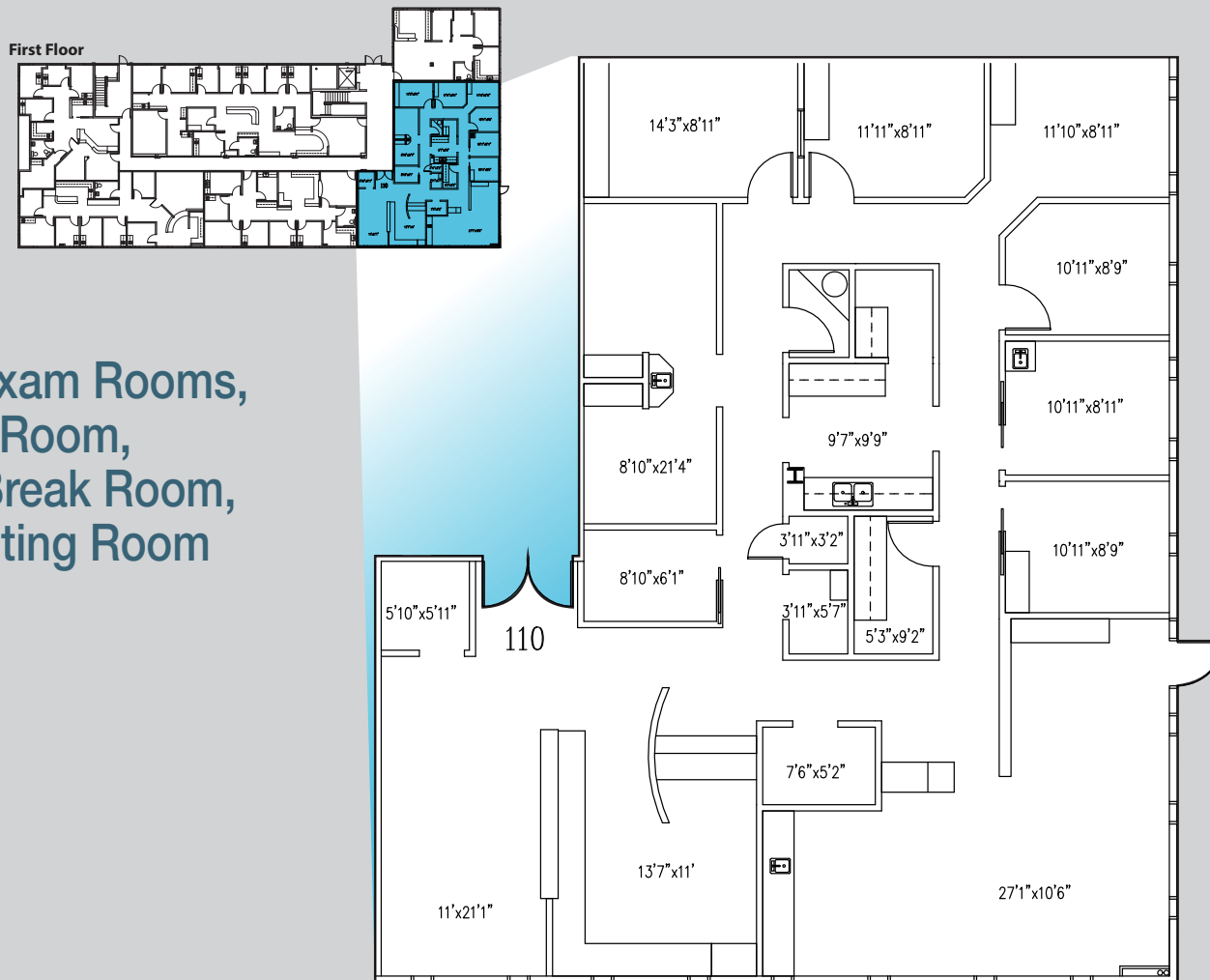
Suite 110 - 3,146 RSF

SUITE DESCRIPTION:

Doctors Office, 8 Private Dental Exam Rooms, 5 Open Bay Dental Chairs, X-Ray Room, Lab/Sterilization Room, Kitchen/Break Room, Reception/Back Office, Large Waiting Room

LEASE RATE

\$3.25 NNN



RSM Health Center

22032 El Paseo, Rancho Santa Margarita, CA 92688

VICINITY MAP:



Bryan McKenney
(949) 478 - 0087 | LIC#01505792
Bryan@MedWestRealty.com

Casey P. Immel
(949) 278 - 5376 | LIC#01312850
Casey@MedWestRealty.com

Dental Suite Available