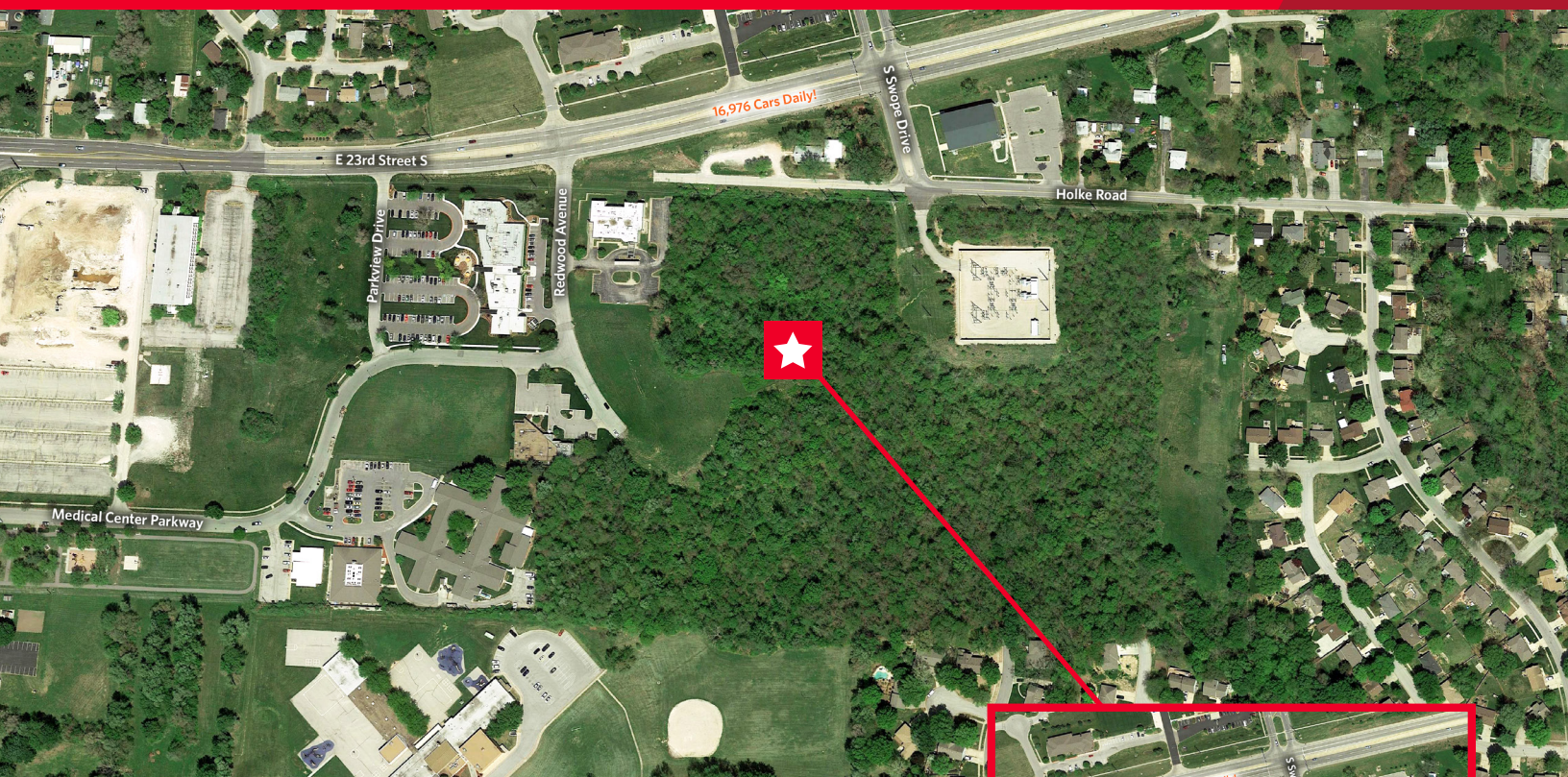




FOR SALE

Holke Road & Redwood Avenue Independence, MO



±20 Acres
Sale Price: \$475,000 / \$23,376 Per Acre

Property Highlights

- Just east of the former Medical Center of Independence
- Heavily wooded and undeveloped land
- 16,976 cars daily on E 23rd Street
- Zoned commercial CP2
- Divisible parcels

Suzanne Dimmel, CCIM
Director
+1 816 412 0271
suzanne.dimmel@cushwakecom

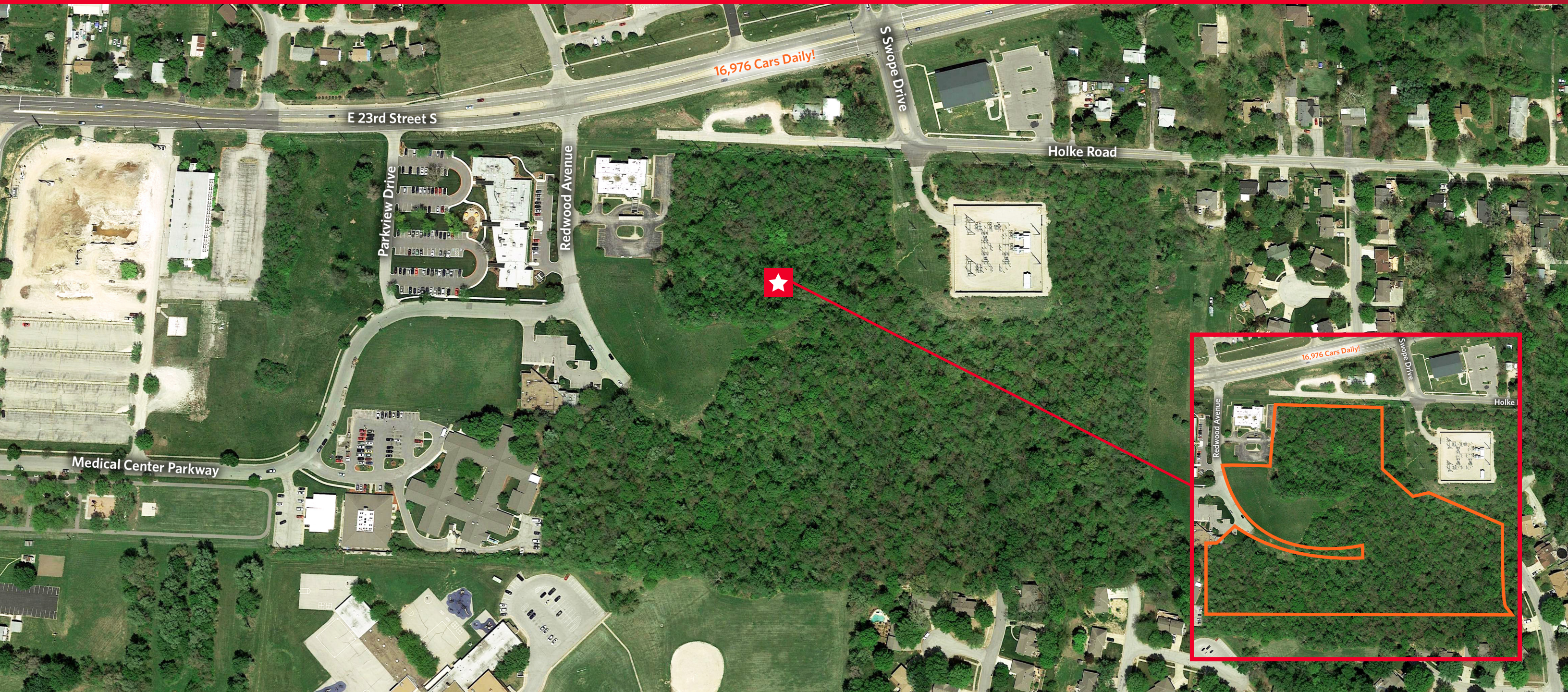
Leonard Popplewell
Associate
+1 816 412 0236
leonard.popplewell@cushwakecom

Andrew Greene
Associate
+1 816 216 5654
andrew.greene@cushwakecom

4600 Madison Avenue, Suite 800
Kansas City, MO 64112
Main +1 816 221 2200
Fax +1 816 842 2798
cushmanwakefield.com



FOR SALE
Holke Road & Redwood Avenue
Independence, MO



Suzanne Dimmel, CCIM
Director
+1 816 412 0271
suzanne.dimmel@cushwake.com

Leonard Popplewell
Associate
+1 816 412 0236
leonard.popplewell@cushwake.com

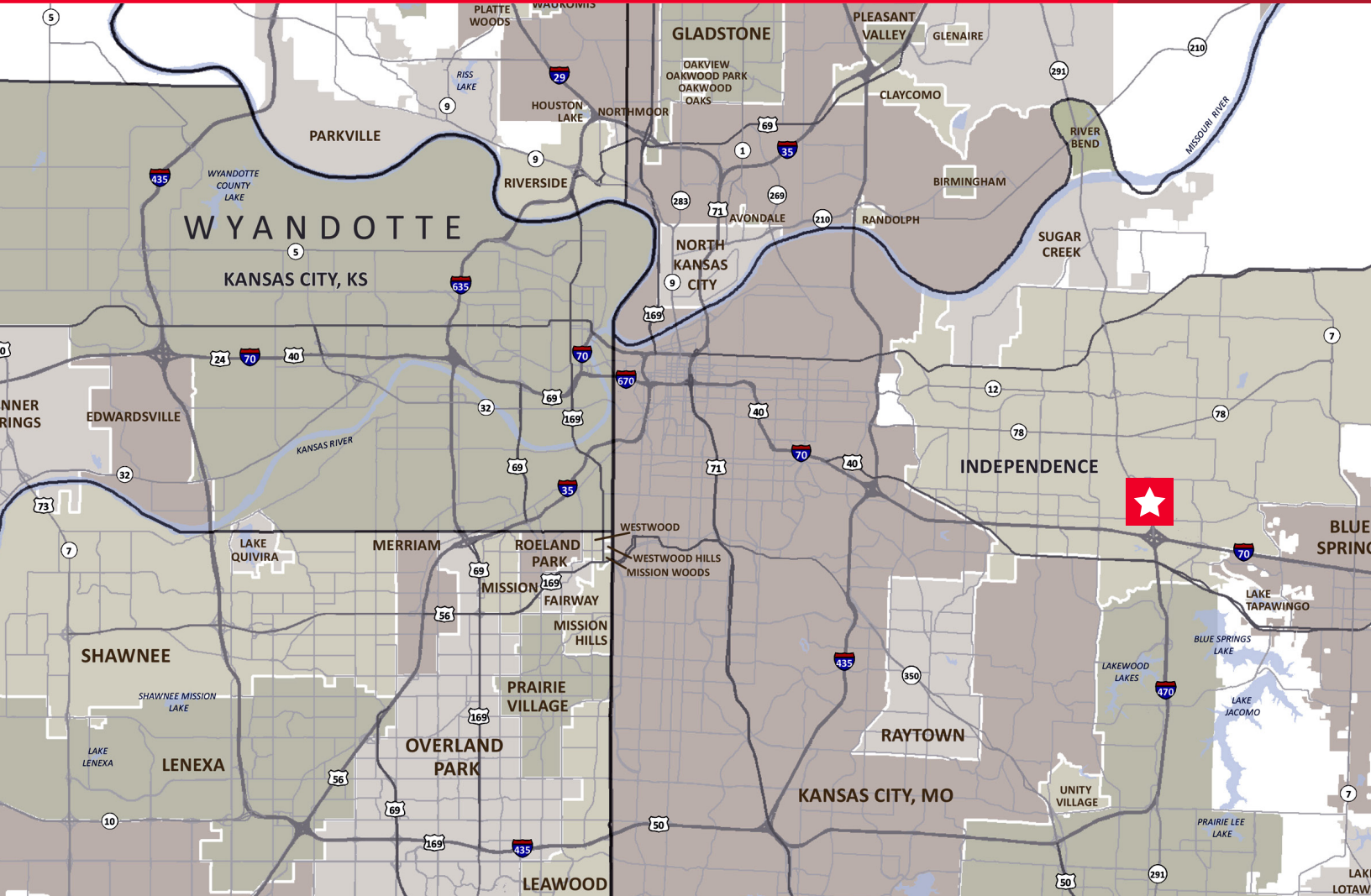
Andrew Greene
Associate
+1 816 216 5654
andrew.greene@cushwake.com

4600 Madison Avenue, Suite 800
Kansas City, MO 64112
Main +1 816 221 2200
Fax +1 816 842 2798
cushmanwakefield.com



FOR SALE

Holke Road & Redwood Avenue Independence, MO



Demographics

	1 Mile	3 Miles	5 Miles
Population	9,411	58,132	137,775
AVG. HH Income	\$56,750	\$55,621	\$57,861

Suzanne Dimmel, CCIM
 Director
 +1 816 412 0271
 suzanne.dimmel@cushwakecom

Leonard Popplewell
 Associate
 +1 816 412 0236
 leonard.popplewell@cushwakecom

Andrew Greene
 Associate
 +1 816 216 5654
 andrew.greene@cushwakecom

4600 Madison Avenue, Suite 800
 Kansas City, MO 64112
 Main +1 816 221 2200
 Fax +1 816 842 2798
cushmanwakefield.com