

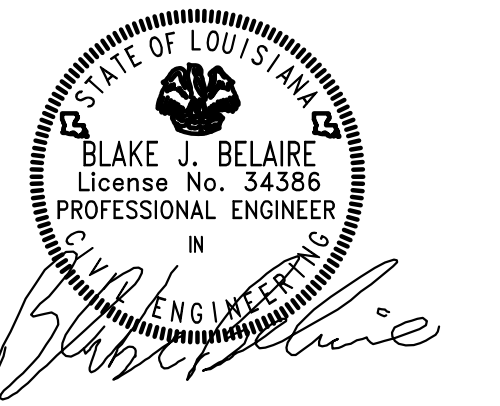
Client:

**NEIL  
ARSEMENT**

Project:

**GDA PROPERTIES**  
113 Windfall Drive  
Broussard, LA 70518

09.22.2014



Sheet Title:

**FLOOR PLAN & LIFE  
SAFETY NOTES**

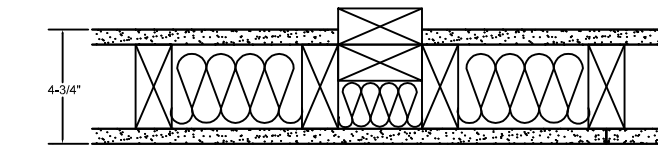
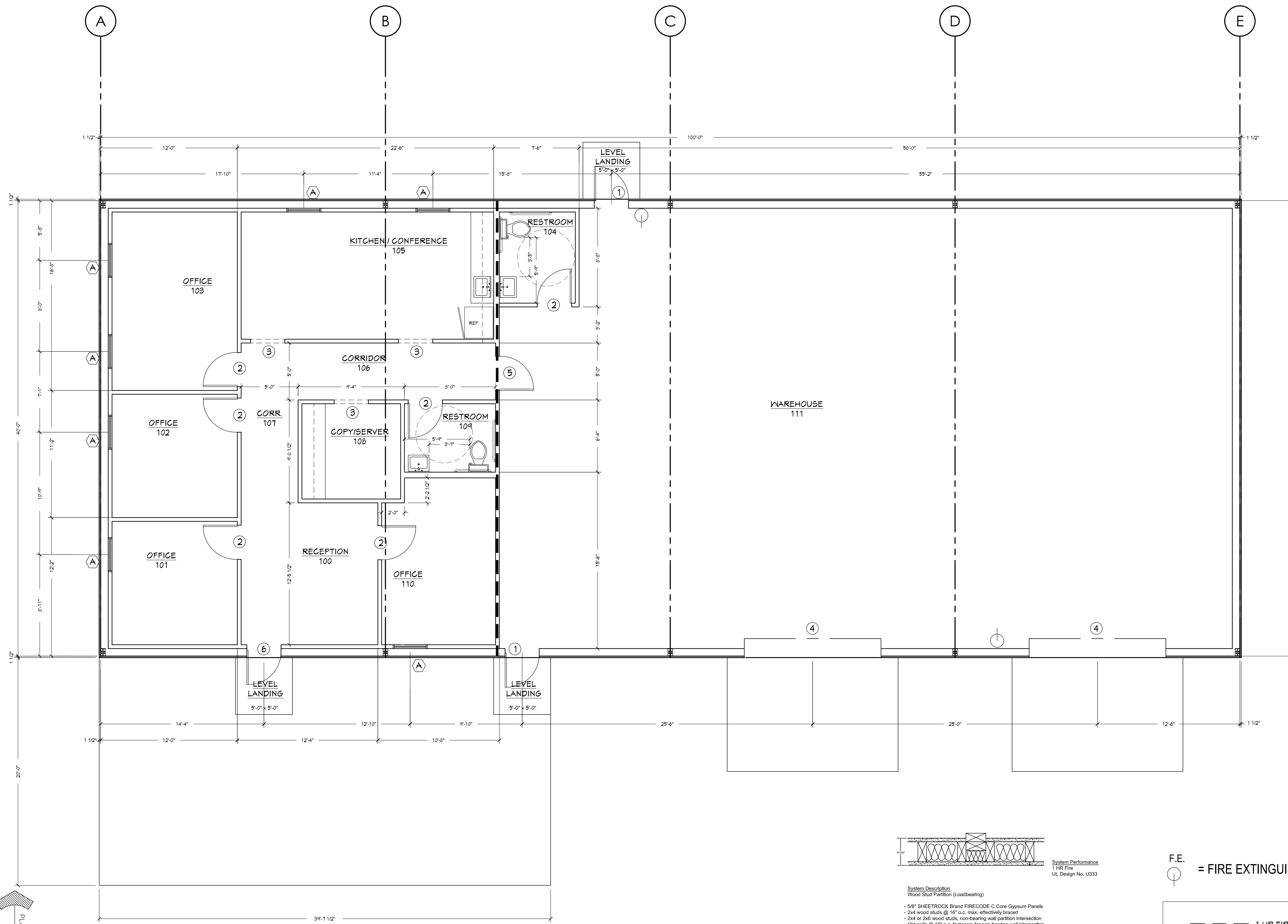
Scale:

Date: **SEPTEMBER 19, 2014**

Drawn By: **Belair**

Sheet:

**A-1.0**

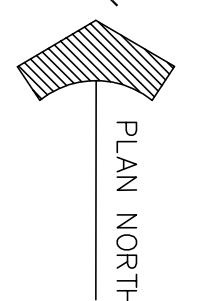
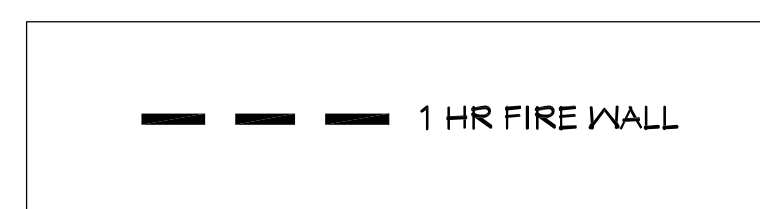


**System Description**  
Wood Stud Partition (Loadbearing)

- 5/8" SHEETROCK Brand FIRECODE C Core Gypsum Panels
- 2x4 wood studs @ 16" o.c. max. effectively braced
- 2x4 or 2x6 wood studs, non-bearing wall partition intersection
- 10d nails @ 16" o.c. fasteners for non-bearing wall intersection
- 5/8" SHEETROCK Brand FIRECODE C Core Gypsum Panels

**System Performance**  
1 HR Fire  
UL Design No. U333

F.E. = FIRE EXTINGUISHER



**1 FLOOR PLAN**  
Scale: 1/4" = 1'-0"