

# Available Medical Office Space for Lease

## Santa Clarita Valley Medical Plaza

26357 McBEAN PARKWAY, SANTA CLARITA, CA 91355

For leasing information:

*Lynn Lantgen*

Senior Director of Leasing

Phone: 858-794-1900

Fax: 858-794-1910

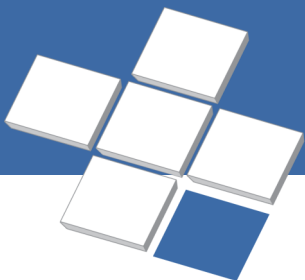
llantgen@pmbres.com

www.pmbres.com

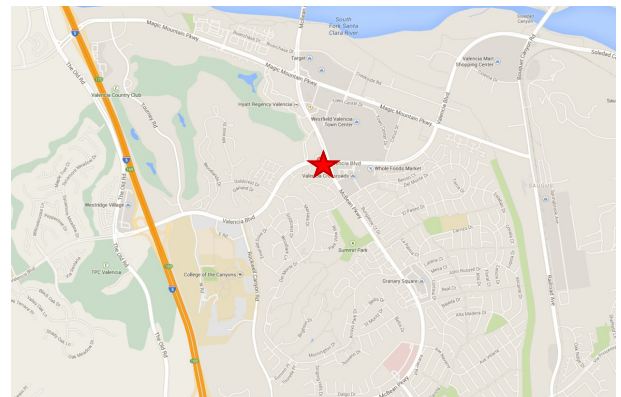
CA Lic. 00981851



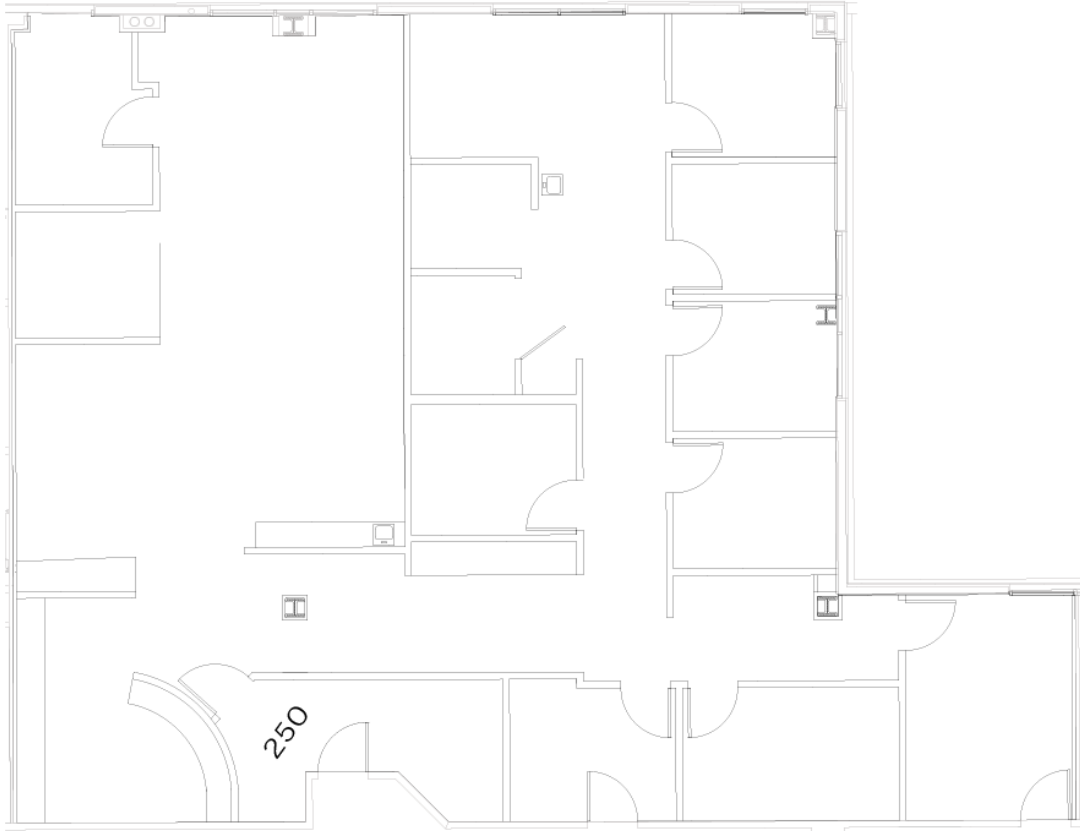
- Class A, Three-story, 78,000 SF Medical Office Building constructed in 2005
- Anchor tenants include Providence Holy Cross and Facey Medical Group
- Ample surface parking
- Convenient access to Highway 126 and Interstate 5
- One mile from Henry Mayo Newhall Memorial Hospital
- Local professional management



**PMB**  
Real Estate Services  
*Real Estate Management Solutions for Healthcare*



# Suite 250 - 2,919 RSF (Available 7/1/21)



**PMB Real Estate Services**  
*Real Estate Management Solutions for Healthcare*