



AVAILABLE FOR LEASE

PREMIERE LOGISTICS TERMINAL IN THE HEART OF NYC

75,313 SQ. FT. 1-STORY WAREHOUSE + 55,351 SQ. FT. FENCED & PAVED PARKING

FEATURES:

- Lot Size: 130,664 Sq. Ft.
- Building Size: 75,313 Sq. Ft.
- Warehouse: 66,982 Sq. Ft.
- Finished Office: 4,482 Sq. Ft.
- Lower Level: 3,848 Sq. Ft.
- Ceiling Height: 13'-1" - 25'-10"
- 19 Exterior Loading Docks
- 4 Interior Loading Docks
- 2 Drive-In Doors
- Wet Sprinkler System
- 2,500 Amps Power, 120/208 Volts
- Oil Heat
- 21 Auto Stalls
- Trailer Parking

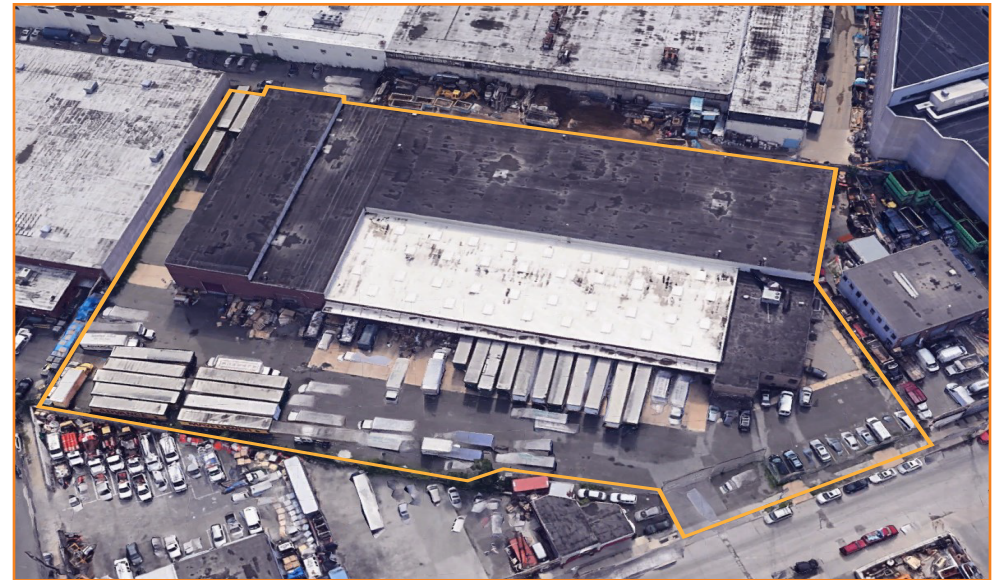
NEARBY:

- Brooklyn-Queens Expressway
- Long Island Expressway
- Pulaski Bridge to Long Island City
- Williamsburg Bridge

Transportation:



Q59 (Grand Ave / 47th St)



LEASE PRICE:

UPON REQUEST

REAL ESTATE TAX:

\$279,496.00 / YEAR

57-47 47TH STREET, MASPETH, NY

BLOCK:

2602

LOT:

58

ZONING:

M3-1

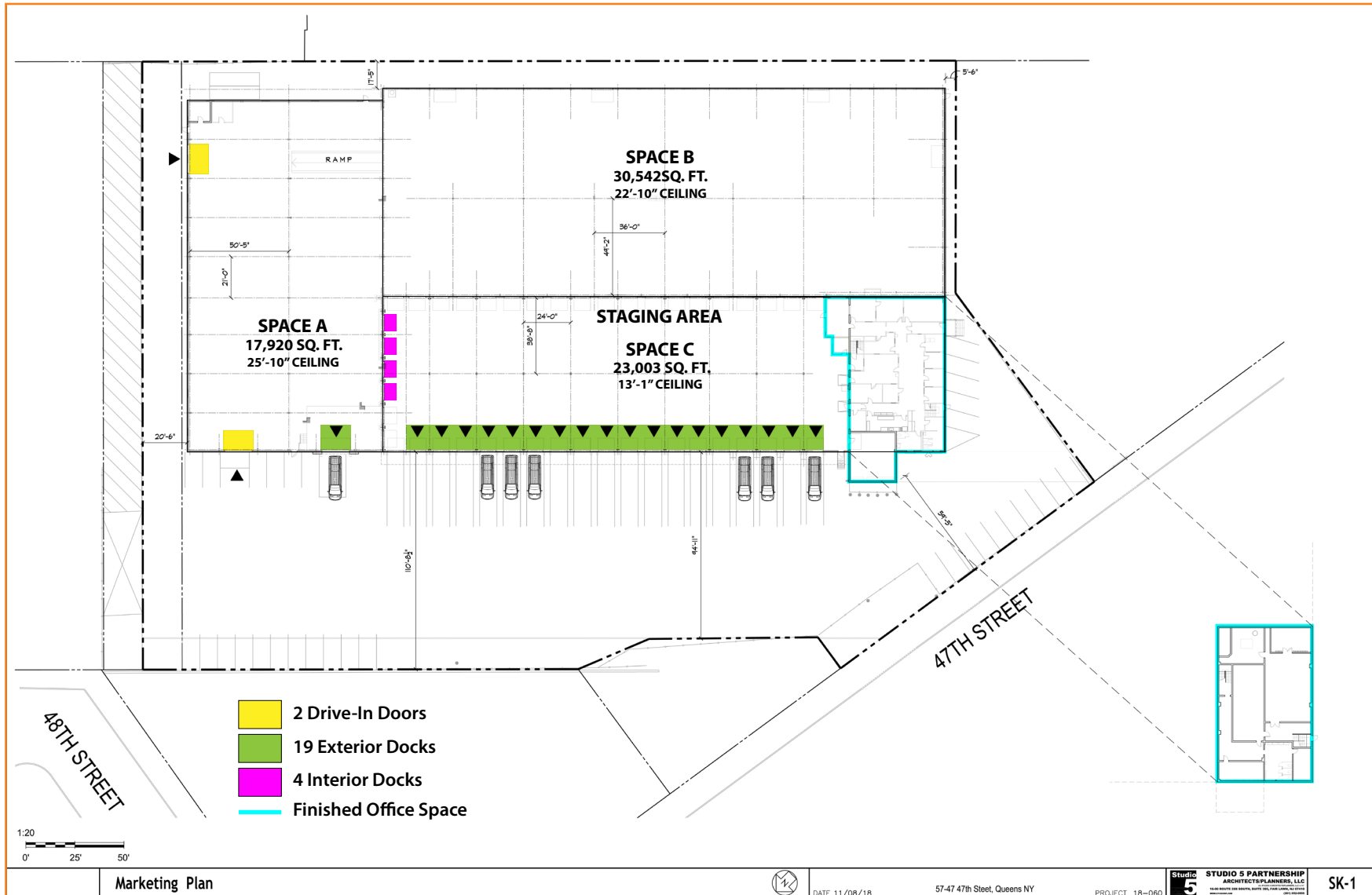
For Information About This Property
Contact Exclusive Agents:

Nechama Liberow, Associate Broker
nliberow@pinnaclereny.com
718-778-6006

David Junik, Partner
djunik@pinnaclereny.com
718-371-6406

Owned & Managed By:







PINNACLE REALTY

OF NEW YORK, LLC

www.pinnacle-ny.com

46-34 11th Street • Long Island City, NY 11101

718-784-8282

