


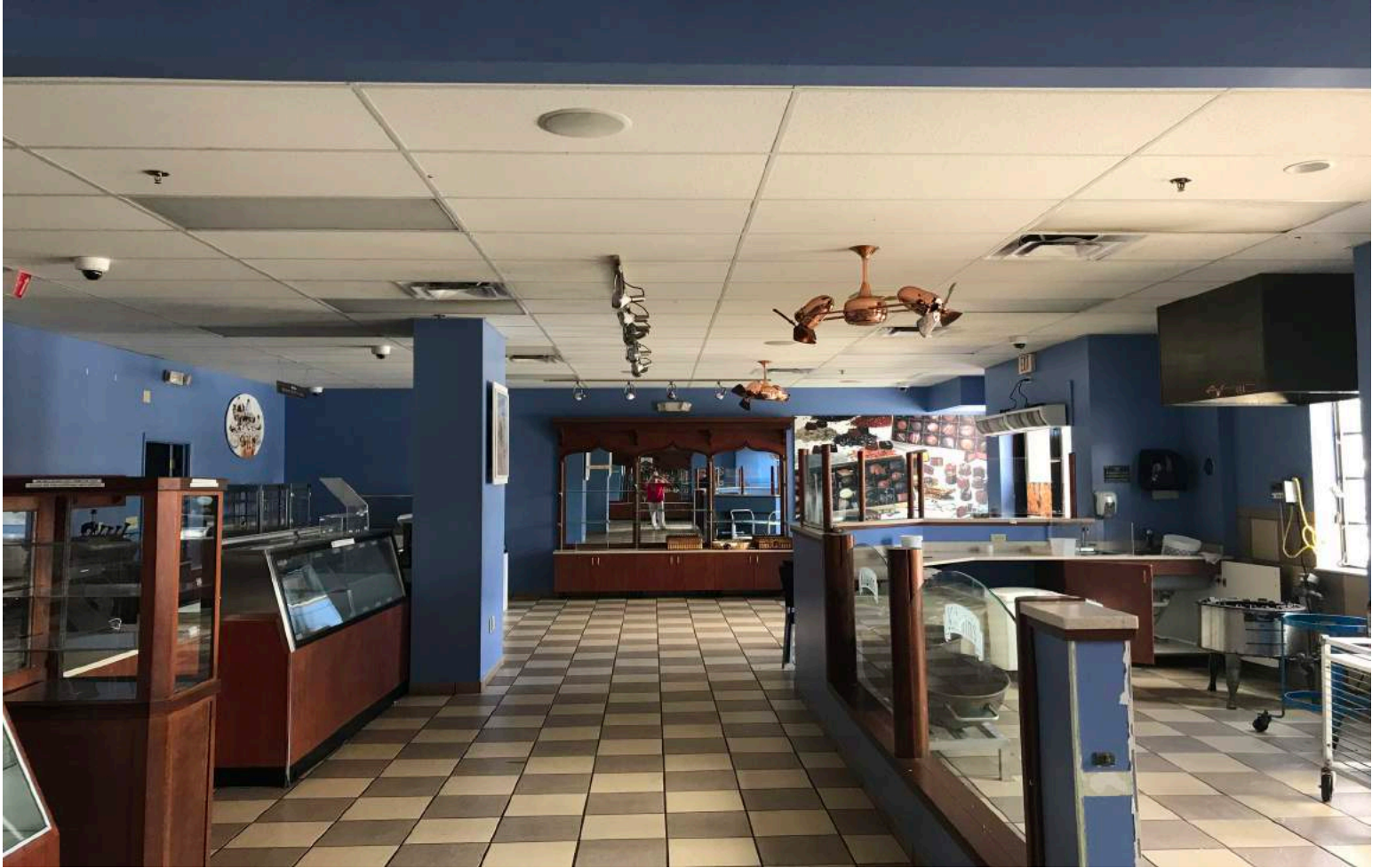
EXCELLENT FRONTAGE
DOWNTOWN LAKE WORTH



PREVIOUSLY:  ±1,660 SF AVAILABLE



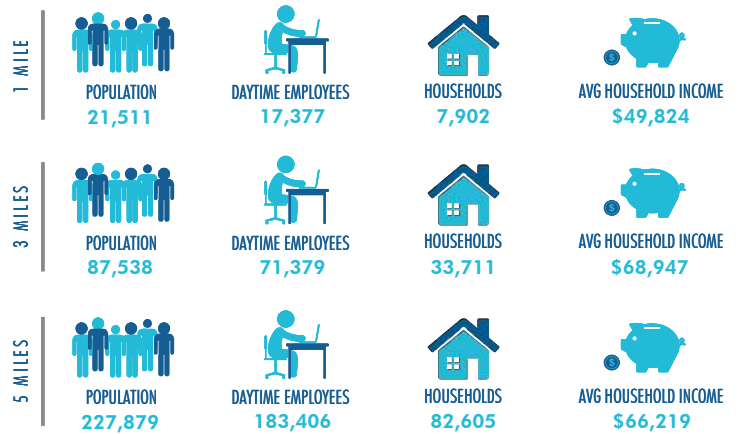
PREVIOUSLY:  ±2,592 SF AVAILABLE



HIGHLIGHTS

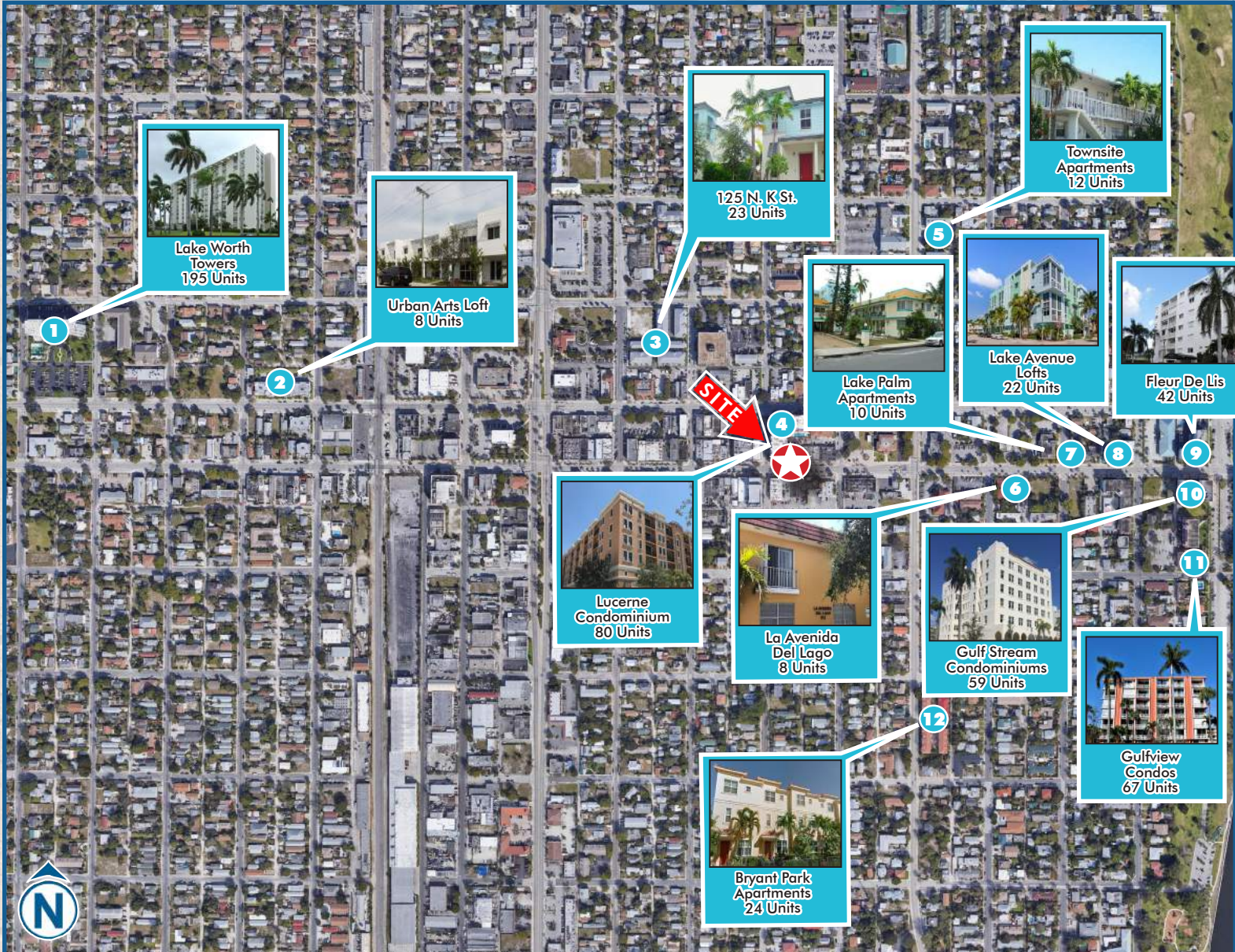
- ±1,660 SF built-out coffee shop endcap space available on busy pedestrian street
- ±2,592 SF beautifully built-out dessert space available
- Both spaces can be converted to restaurant
- Located on the ground floor of a fully occupied 80 unit condo building
- Garage parking for tenant and employees
- Downtown Lake Worth offers an abundance of free surface parking spaces

DEMOGRAPHICS





RESIDENTIAL COMMUNITY MAP



Total Units: 550

SITE | SURROUNDING RESIDENTIAL

**510 - 514 LAKE AVENUE
LAKE WORTH, FL**