

# 980

AVENUE OF  
THE AMERICAS

## The Retail Nexus of Herald Square + Bryant Park



Conceptual Rendering  
NORTHEAST CORNER OF 36TH STREET  
AND AVENUE OF THE AMERICAS





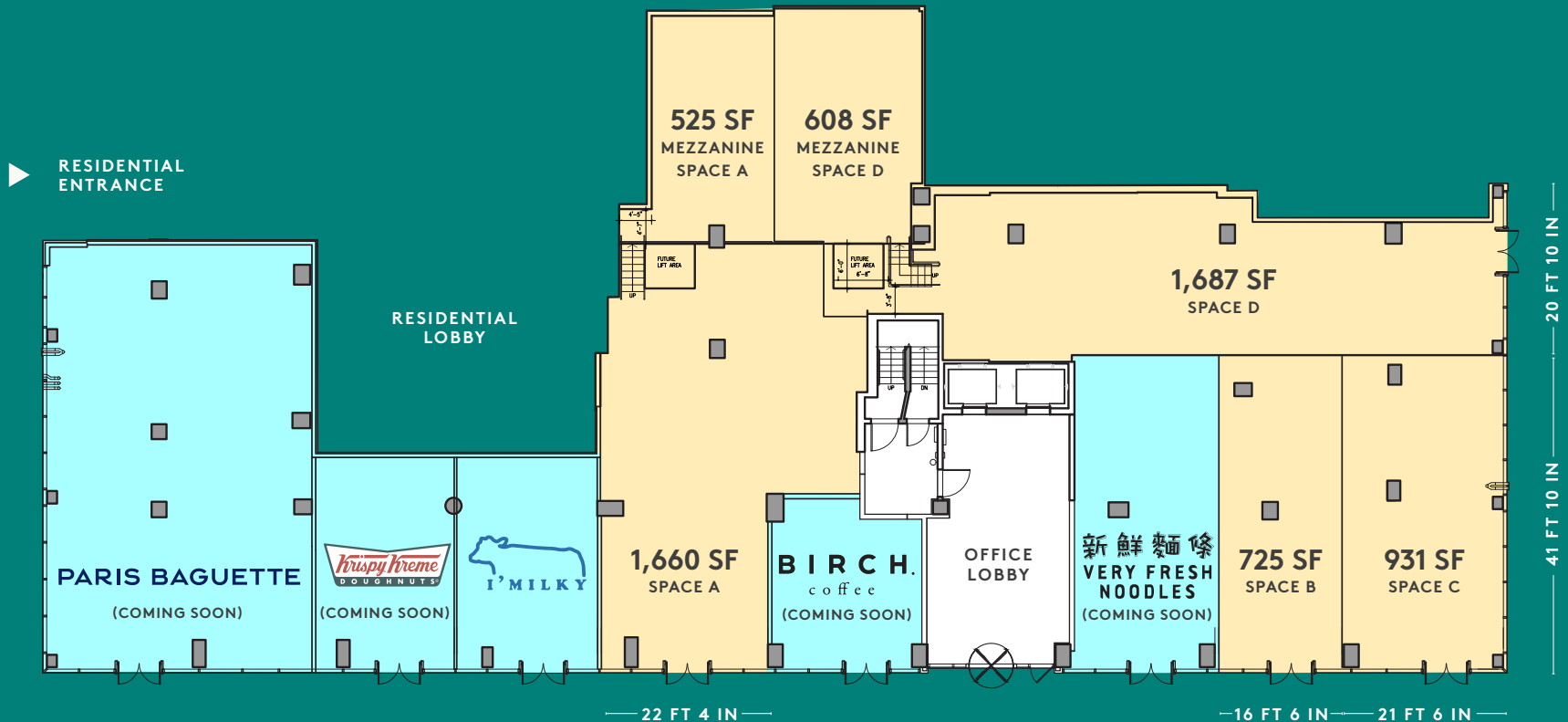
# A Full Retail Block

Situated in the highly trafficked passageway between Herald Square and Bryant Park with **over 312,000 pedestrians passing the property weekly.** At the base of a mixed-use tower with 380 residential units, 75,000-SF WeWork office and retail opportunities from 725-6,100 SF.

# Limitless Potential

WEST 37TH STREET

WEST 36TH STREET



AVENUE OF THE AMERICAS

## SCENARIO ONE GROUND FLOOR

Space A	1,660 SF
Space B	725 SF
Space C	931 SF
Space D	1,687 SF

## MEZZANINE

Space A	525 SF
Space D	608 SF

## FRONTAGE

60 FT 6 IN on Avenue of the Americas  
61 FT 2 IN on West 36th Street

## CEILING HEIGHTS

18 FT

## POSSESSION

Immediate

## TERM

Long-term

## FEATURES

- Spaces can be combined in a variety of configurations
- All spaces can be vented
- All uses considered
- In close proximity to the B,D,F,M,N,Q,R,W and 7 subway lines
- Billboard signage opportunities available
- Storage mezzanine can be created in each space





# Unparalleled Co-tenancy

Own the retail streetscape  
on one of Manhattan's  
busiest corridors.



