

PHASE II CITY CENTER NORTH

87TH ST PKWY & PENROSE LN, LENEXA, KANSAS



JOHN SWEENEY, CCIM
Senior Broker Associate
913.945.3718
john@reececommercial.com



HIGHLIGHTS

- 0.39 Acre Retail/Mixed Use Pad Site Available
- For Sale or Build-to-Suit
- Asking Price: \$995,000
- Rare opportunity at thriving Lenexa City Center
- Tremendous signage and visibility at corner of 87th and Penrose
- Phase 1 Completed August 2017; Includes 125 room Spring Hill Suites Hotel, Orange Theory Fitness and Revocup Coffee
- Phase 2 Preliminary design includes 8,500+/- SF ground floor retail, plus 2nd floor residential/office space
- Access to shared parking structure directly to the north
- Surrounding amenities include Lenexa Civic Campus and Community Center, Public Market, Domain City Center Apartments, Canyon Creek Golf Club, Kiewit Engineering HQ, Lifetime Fitness, numerous restaurants and Shawnee Mission Park

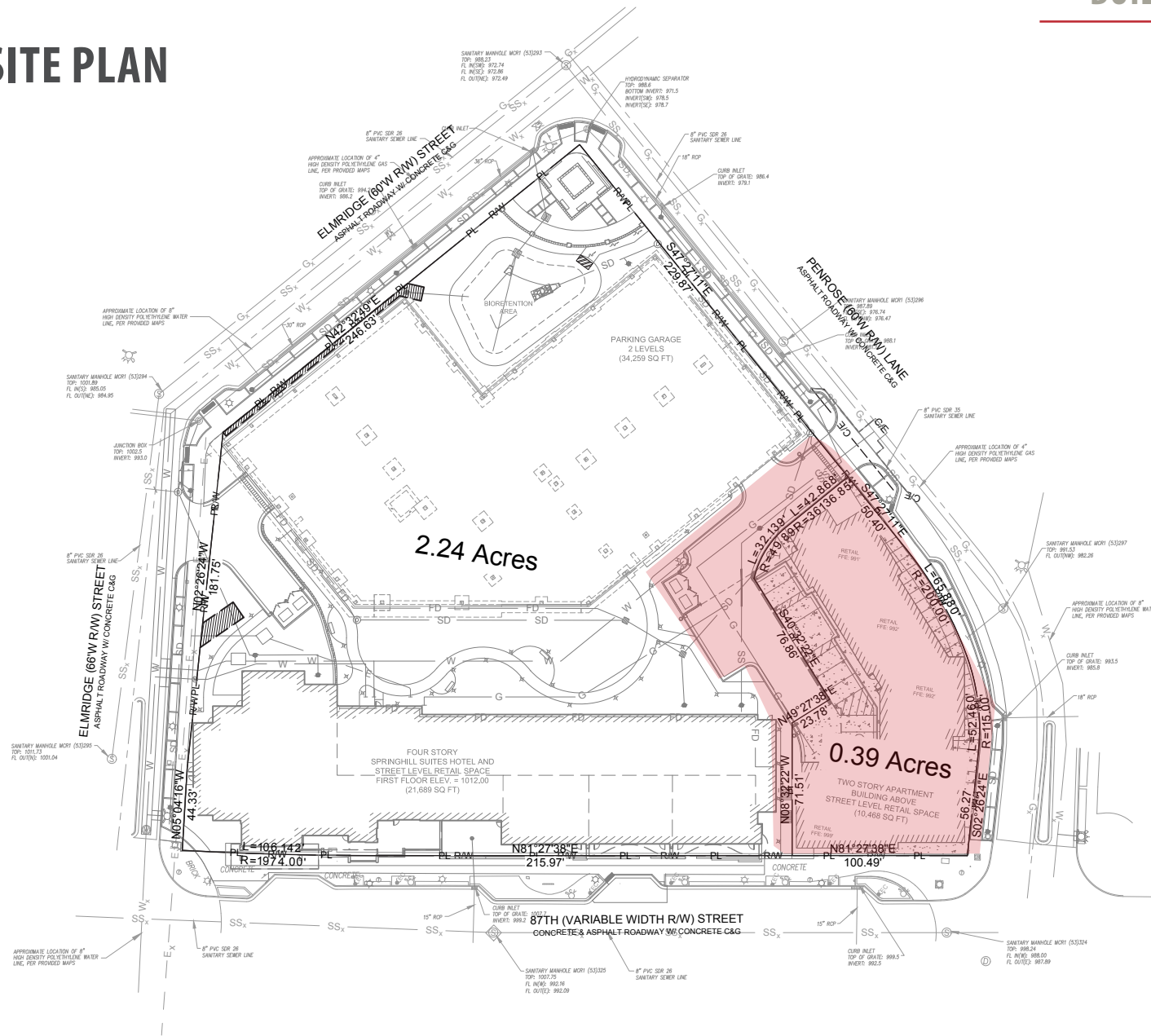


OVERVIEW



The information in this package has been obtained from sources believed reliable. While we do not doubt its accuracy we have not verified it and make no guarantee, warranty or representation about it. It is your responsibility to independently confirm its accuracy and completeness. Any projections, opinions, assumptions, or estimates used are for example only and do not represent the current or future performance of the property. You and your advisors should conduct a careful, independent investigation of the property to determine to your satisfaction the suitability of the property for your needs.
© 2019

PHASE II-SITE PLAN



The information in this package has been obtained from sources believed reliable. While we do not doubt its accuracy we have not verified it and make no guarantee, warranty or representation about it. It is your responsibility to independently confirm its accuracy and completeness. Any projections, opinions, assumptions, or estimates used are for example only and do not represent the current or future performance of the property. You and your advisors should conduct a careful, independent investigation of the property to determine to your satisfaction the suitability of the property for your needs. © 2019





ADDRESS |

87th & Renner, Lenexa, KS



TRAFFIC COUNTS |

70,700 Vehicles/day - Interstate 435

RETAIL MAP



The information in this package has been obtained from sources believed reliable. While we do not doubt its accuracy we have not verified it and make no guarantee, warranty or representation about it. It is your responsibility to independently confirm its accuracy and completeness. Any projections, opinions, assumptions, or estimates used are for example only and do not represent the current or future performance of the property. You and your advisors should conduct a careful, independent investigation of the property to determine to your satisfaction the suitability of the property for your needs. © 2019



REECE
COMMERCIAL REAL ESTATE

a Berkshire Hathaway Affiliate

87TH ST & PENROSE LANE

DEMOGRAPHICS

Population								
Estimated Population (2019)	9,378	46,867	162,503	321,096				
Projected Population (2024)	9,915	49,434	171,106	337,759				
Census Population (2010)	6,743	42,089	148,154	292,900				
Census Population (2000)	4,197	35,507	125,772	256,990				
Projected Annual Growth (2019-2024)	537	1.1%	2,567	1.1%	8,603	1.1%	16,663	1.0%
Historical Annual Growth (2010-2019)	2,635	3.1%	4,778	1.1%	14,349	1.0%	28,196	1.0%
Historical Annual Growth (2000-2010)	2,546	6.1%	6,582	1.9%	22,382	1.8%	35,910	1.4%
Estimated Population Density (2019)	2,987	<i>psm</i>	1,658	<i>psm</i>	2,070	<i>psm</i>	1,975	<i>psm</i>
Trade Area Size	3.1	<i>sq mi</i>	28.3	<i>sq mi</i>	78.5	<i>sq mi</i>	162.5	<i>sq mi</i>
Households								
Estimated Households (2019)	4,335	19,766	67,725	132,772				
Projected Households (2024)	4,573	20,881	71,530	140,151				
Census Households (2010)	2,958	16,985	59,878	117,245				
Census Households (2000)	1,805	13,469	49,682	100,696				
Projected Annual Growth (2019-2024)	237	1.1%	1,115	1.1%	3,806	1.1%	7,378	1.1%
Historical Annual Change (2000-2019)	2,531	7.4%	6,297	2.5%	18,043	1.9%	32,077	1.7%
Average Household Income								
Estimated Average Household Income (2019)	\$85,643	\$108,874	\$97,124	\$97,450				
Projected Average Household Income (2024)	\$95,970	\$122,983	\$109,390	\$110,317				
Census Average Household Income (2010)	\$78,998	\$96,363	\$82,003	\$81,642				
Census Average Household Income (2000)	\$68,781	\$82,132	\$71,124	\$72,257				
Projected Annual Change (2019-2024)	\$10,327	2.4%	\$14,108	2.6%	\$12,266	2.5%	\$12,867	2.6%
Historical Annual Change (2000-2019)	\$16,862	1.3%	\$26,742	1.7%	\$26,001	1.9%	\$25,194	1.8%
Median Household Income								
Estimated Median Household Income (2019)	\$82,883	\$94,540	\$85,337	\$84,879				
Projected Median Household Income (2024)	\$96,234	\$108,537	\$98,115	\$97,487				
Census Median Household Income (2010)	\$68,632	\$80,966	\$69,594	\$69,579				
Census Median Household Income (2000)	\$65,172	\$72,688	\$62,273	\$62,660				
Projected Annual Change (2019-2024)	\$13,351	3.2%	\$13,997	3.0%	\$12,778	3.0%	\$12,608	3.0%
Historical Annual Change (2000-2019)	\$17,711	1.4%	\$21,852	1.6%	\$23,064	1.9%	\$22,219	1.9%
Per Capita Income								
Estimated Per Capita Income (2019)	\$39,593	\$45,959	\$40,544	\$40,373				
Projected Per Capita Income (2024)	\$44,258	\$51,987	\$45,793	\$45,849				
Census Per Capita Income (2010)	\$34,658	\$38,887	\$33,142	\$32,681				
Census Per Capita Income (2000)	\$29,991	\$31,126	\$28,103	\$28,243				
Projected Annual Change (2019-2024)	\$4,665	2.4%	\$6,028	2.6%	\$5,249	2.6%	\$5,476	2.7%
Historical Annual Change (2000-2019)	\$9,602	1.7%	\$14,833	2.5%	\$12,441	2.3%	\$12,130	2.3%
Estimated Average Household Net Worth (2019)	\$815,864	\$914,705	\$763,938	\$757,568				

This report was produced using data from private and government sources deemed to be reliable. The information herein is provided without representation or warrant.

The information in this package has been obtained from sources believed reliable. While we do not doubt its accuracy we have not verified it and make no guarantee, warranty or representation about it. It is your responsibility to independently confirm its accuracy and completeness. Any projections, opinions, assumptions, or estimates used are for example only and do not represent the current or future performance of the property. You and your advisors should conduct a careful, independent investigation of the property to determine to your satisfaction the suitability of the property for your needs. © 2019

