

STONE REAL ESTATE

# 209 SOUTH LASALLE



**2,718**  
Square feet available



**56K**  
Office population in a two block radius



**44'**  
Frontage on Adams Street

## Available Retail in Prestigious Rookery



### PROPERTY DESCRIPTION

Designed by Daniel Burnham and John Root with interior design by Frank Lloyd Wright, this building is famous for its prominence and iconic architecture.

### AVAILABLE SPACE

2,718 square feet with 44' frontage on Adams Street with potential for outside seating

### OFFICE POPULATION

An estimated 118,425 people work within a two block radius of the building.

### WEEKDAY PEDESTRIAN TRAFFIC

An estimated 10,100 pedestrians on Adams Street per weekday.

### COMMERCIAL TENANTS



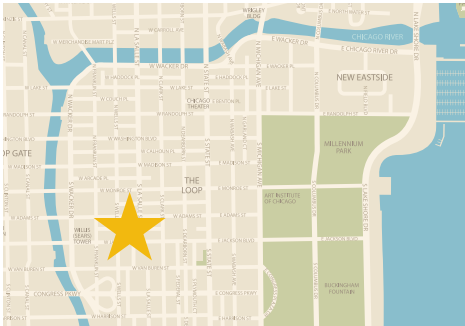
**\$112.7K**  
Average household income in a 2 block radius



**8.4K**  
Average daily sidewalk foot traffic on LaSalle Street



**18K**  
Vehicles per day at the intersection



#### EXCLUSIVE AGENTS

**Eric Kamen** 312/782-1375  
ekamen@stonerealestate.com

**John Vance** 312/782-1373  
jvance@stonerealestate.com

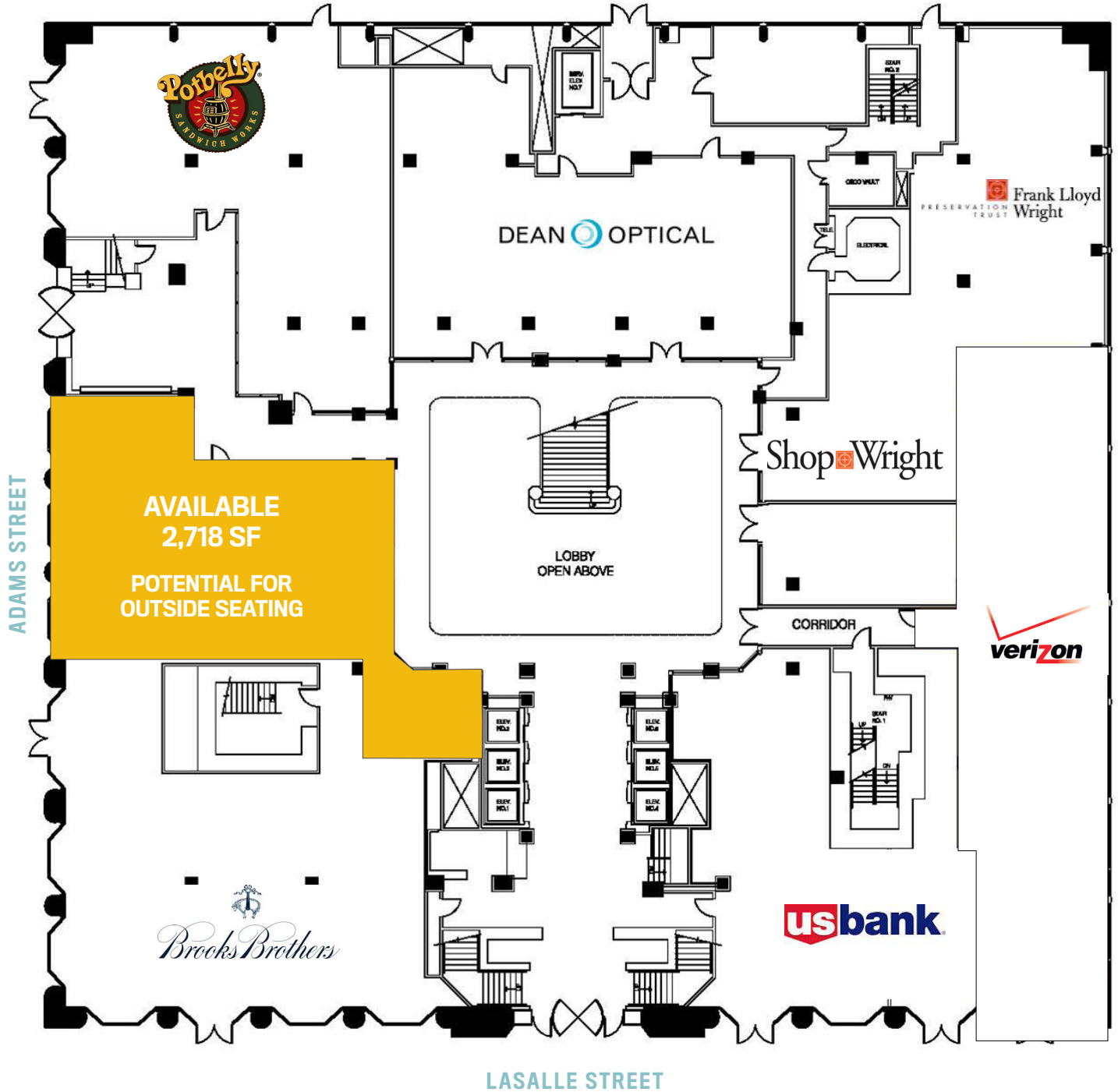
#### PROPERTY MANAGEMENT

The John Buck Company

**STONE**  
REAL ESTATE

STONE REAL ESTATE

# 209 SOUTH LASALLE



EXCLUSIVE AGENTS

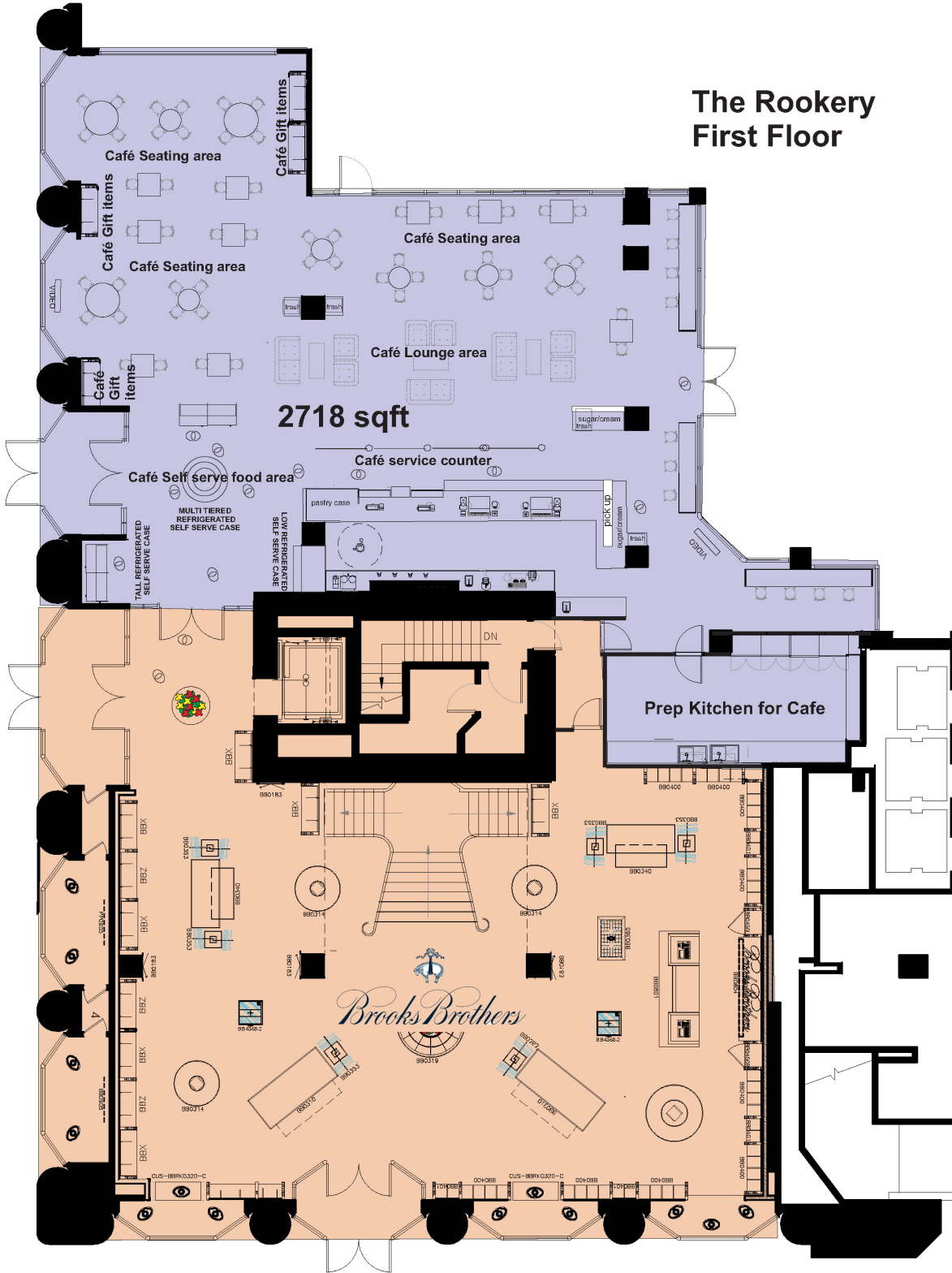
**Eric Kamen** 312/782-1375  
ekamen@stonerealestate.com

**John Vance** 312/782-1373  
jvance@stonerealestate.com

PROPERTY MANAGEMENT

The John Buck Company

**STONE**  
REAL ESTATE



The Rookery  
First Floor

EXCLUSIVE AGENTS

Eric Kamen 312/782-1375  
ekamen@stonerealestate.com

John Vance 312/782-1373  
jvance@stonerealestate.com

PROPERTY MANAGEMENT

The John Buck Company