

4 ASTOR PLACE

Previously David Barton Gym

BETWEEN BROADWAY & LAFAYETTE





TOTAL RETAIL: 30,045 SF

GROUND FLOOR: 4,908 SF WITH 15' CEILING
SECOND FLOOR: 14,304 SF WITH 15' CEILING
LOWER LEVEL: 5,095 SF WITH 11' CEILING
SUB-LOWER LEVEL: 5,738 SF WITH 11' CEILING

FRONTAGE: APPROX. 400'

GROUND FLOOR: APPROX. 60' FRONTING ASTOR
SECOND FLOOR: APPROX. 340' WRAPAROUND

POSSESSION: IMMEDIATE

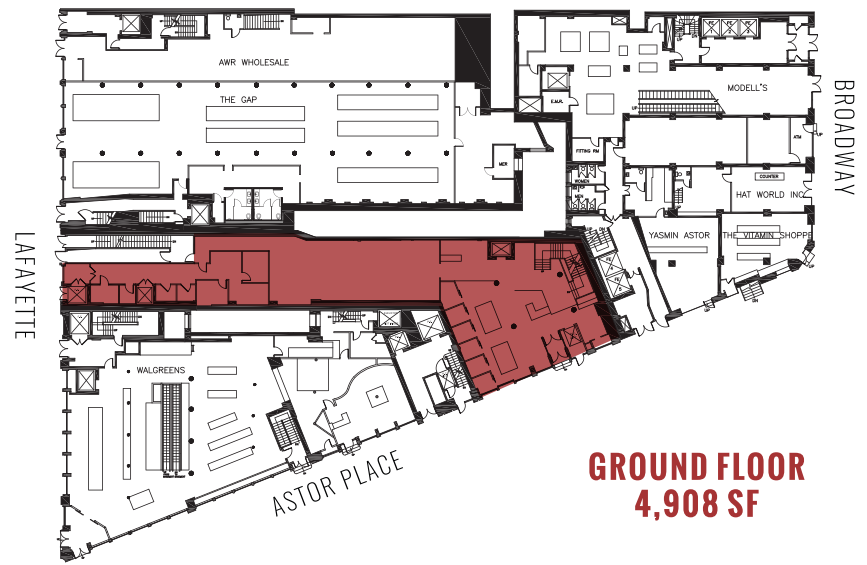
- REASONABLE DIVISIONS CONSIDERED
- STEPS FROM THE ASTOR PLACE SUBWAY STOP WITH OVER **18,000 PEDESTRIANS DAILY**
- IN THE HEART OF NYC CAMPUS WITH OVER **50,000 STUDENTS**
- NEIGHBORS INCLUDE: **CHASE**  **PRET A MANGER** 
American Apparel[™]  **Walgreens**  **THE Vitamin Shoppe**  **at&t**
BARRY'S BOOTCAMP  **GAP**  **sweetgreen**  **LENSCRAFTERS** 

Newmark Grubb
Knight Frank
Retail

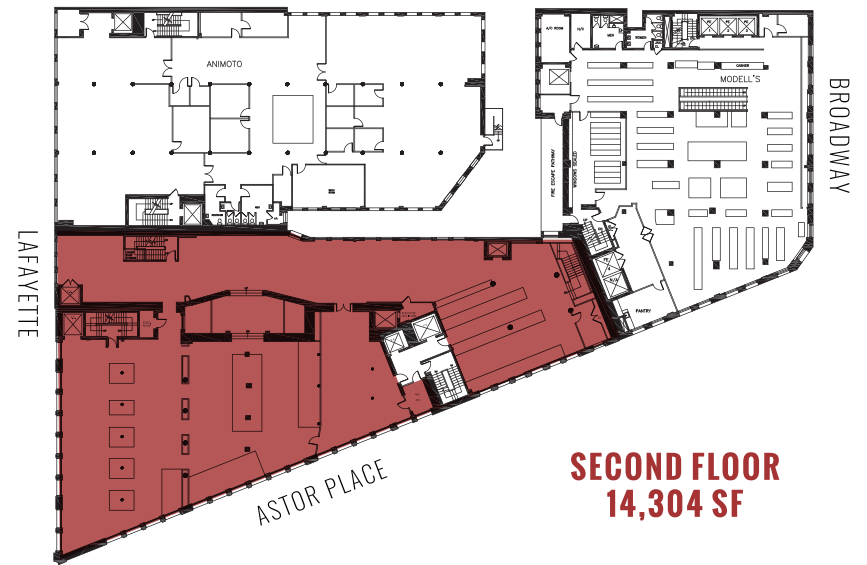


4 ASTOR PLACE

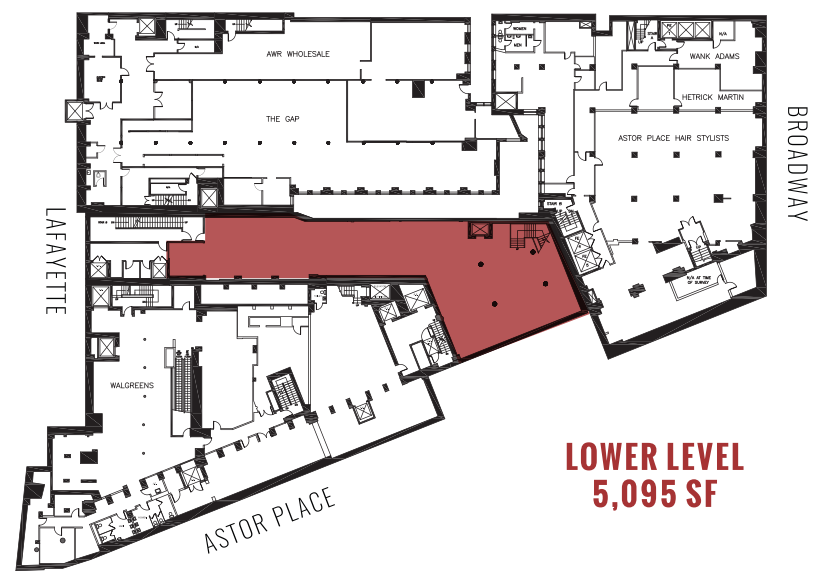
FLOOR PLANS



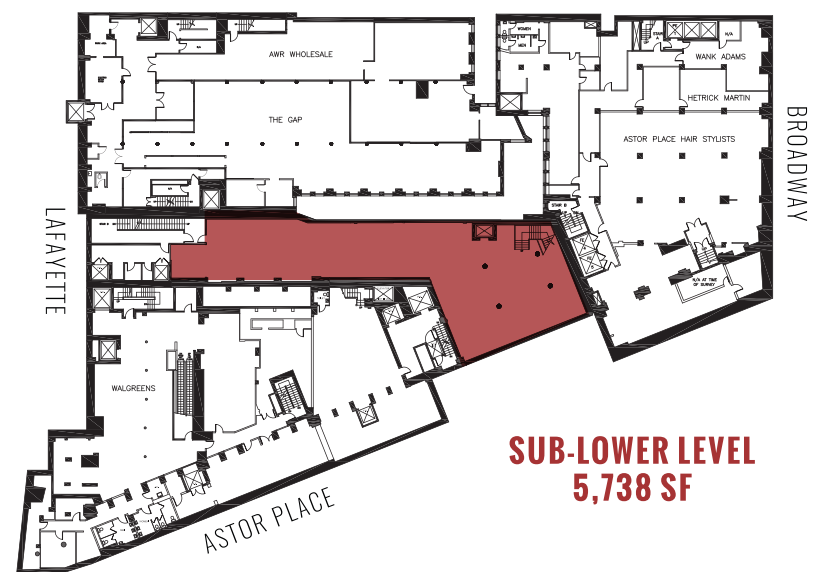
GROUND FLOOR
4,908 SF



SECOND FLOOR
14,304 SF



LOWER LEVEL
5,095 SF



SUB-LOWER LEVEL
5,738 SF



4 ASTOR PLACE



For further information, please contact:
Ross Kaplan 212.850.5418

rkaplan@ngkf.com

**Newmark Grubb
 Knight Frank**
 Retail

www.ngkf.com/retail



The information contained herein has been obtained from sources deemed reliable but has not been verified and no guarantee, warranty or representation, either express or implied, is made with respect to such information. Terms of sale or lease and availability are subject to change or withdrawal without notice.