



Vige Street

Opelousas, Louisiana 70570

Property Highlights

- Approximately 3.25 Acres
- Less than 3 miles to Opelousas High School
- 2 miles to Highway 190 & Interstate 49
- \$20,000.00 per Acre

Sale Price

\$65,000



CALL OR EMAIL FOR MORE INFORMATION

For more information

Stuart Peterson

O: 225 295 0800 | C: 337 274 8222
speterson@latterblum.com

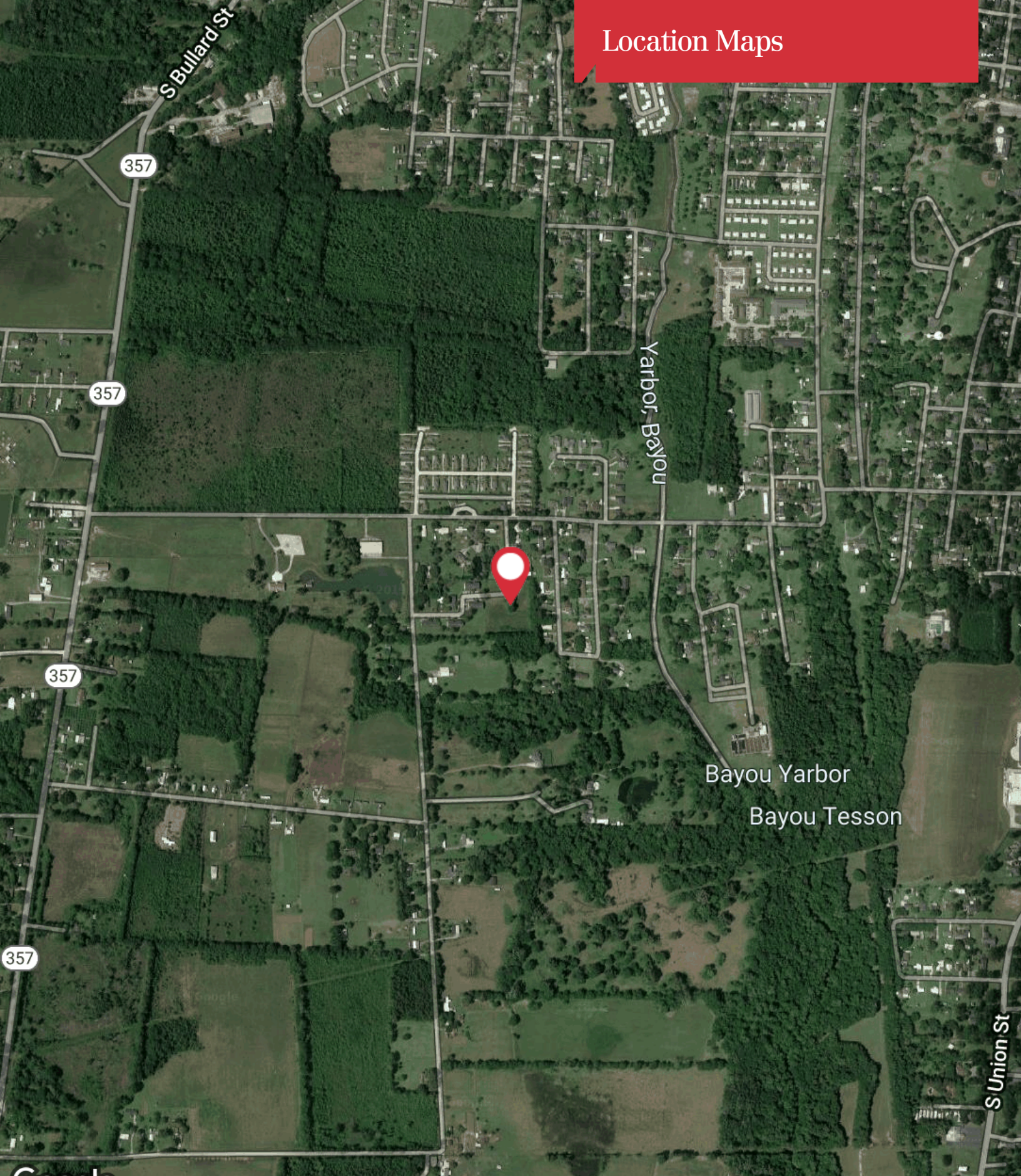
1700 City Farm Drive
Baton Rouge, LA 70806
225 295 0800 tel
latterblum.com

NO WARRANTY OR REPRESENTATION, EXPRESS OR IMPLIED, IS MADE AS TO THE ACCURACY OF THE INFORMATION CONTAINED HEREIN, AND THE SAME IS SUBMITTED SUBJECT TO ERRORS, OMISSIONS, CHANGE OF PRICE, RENTAL OR OTHER CONDITIONS, PRIOR SALE, LEASE OR FINANCING, OR WITHDRAWAL WITHOUT NOTICE, AND OF ANY SPECIAL LISTING CONDITIONS IMPOSED BY OUR PRINCIPALS NO WARRANTIES OR REPRESENTATIONS ARE MADE AS TO THE CONDITION OF THE PROPERTY OR ANY HAZARDS CONTAINED THEREIN ARE ANY TO BE IMPLIED. LICENSED IN LOUISIANA.

Additional Photos



Location Maps



Google

Map data ©2019 Google Imagery ©2019 , DigitalGlobe, USDA Farm Service Agency