

463 Brewster Avenue, Unit #6

Redwood City, CA

Great location with easy access
to US 101 and downtown
Redwood City

±930 SF of office/warehouse
space

Reception area, 3 offices,
restroom and small warehouse

Grade level-door

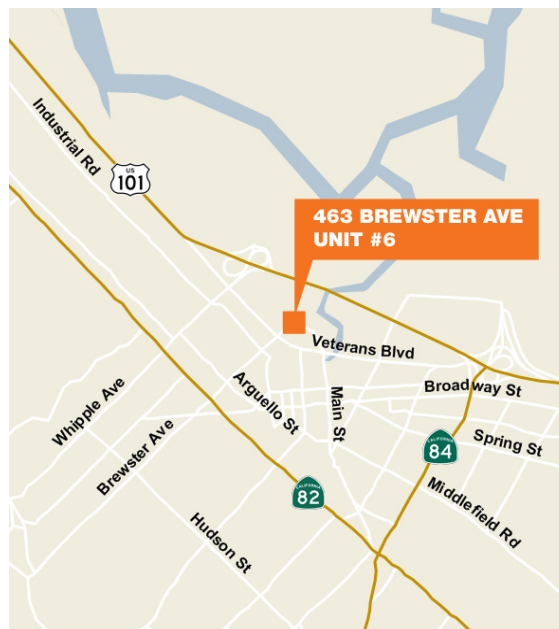
High visibility with street
frontage

Off-street parking

\$2.25 PSF
Industrial Gross



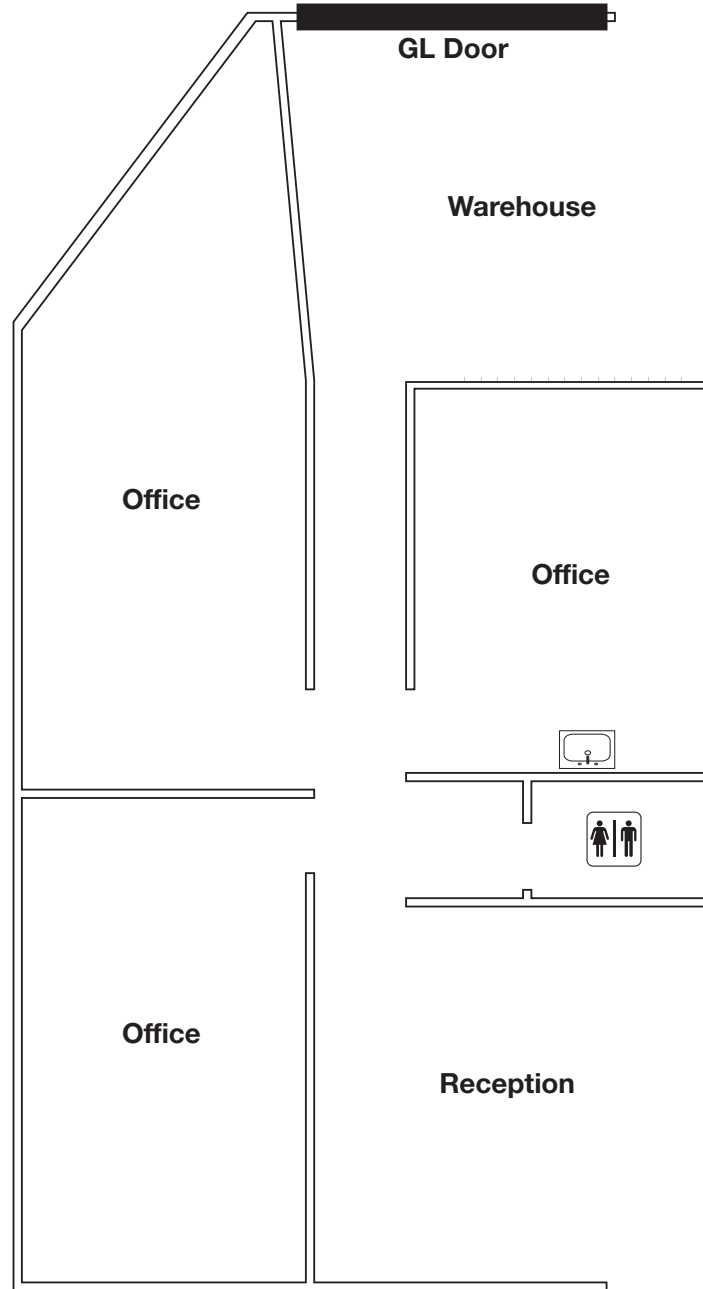
Location



Contact

Martin Church, LEED AP
Senior Vice President
650.769.3533
mchurch@kiddermathews.com
LIC #00695816

463 Brewster Avenue



Contact

Not to Scale

Martin Church, LEED AP
Senior Vice President
650.769.3533
mchurch@kiddermathews.com
LIC #00695816